



## Healum Avenue, UB2

£415 Per week

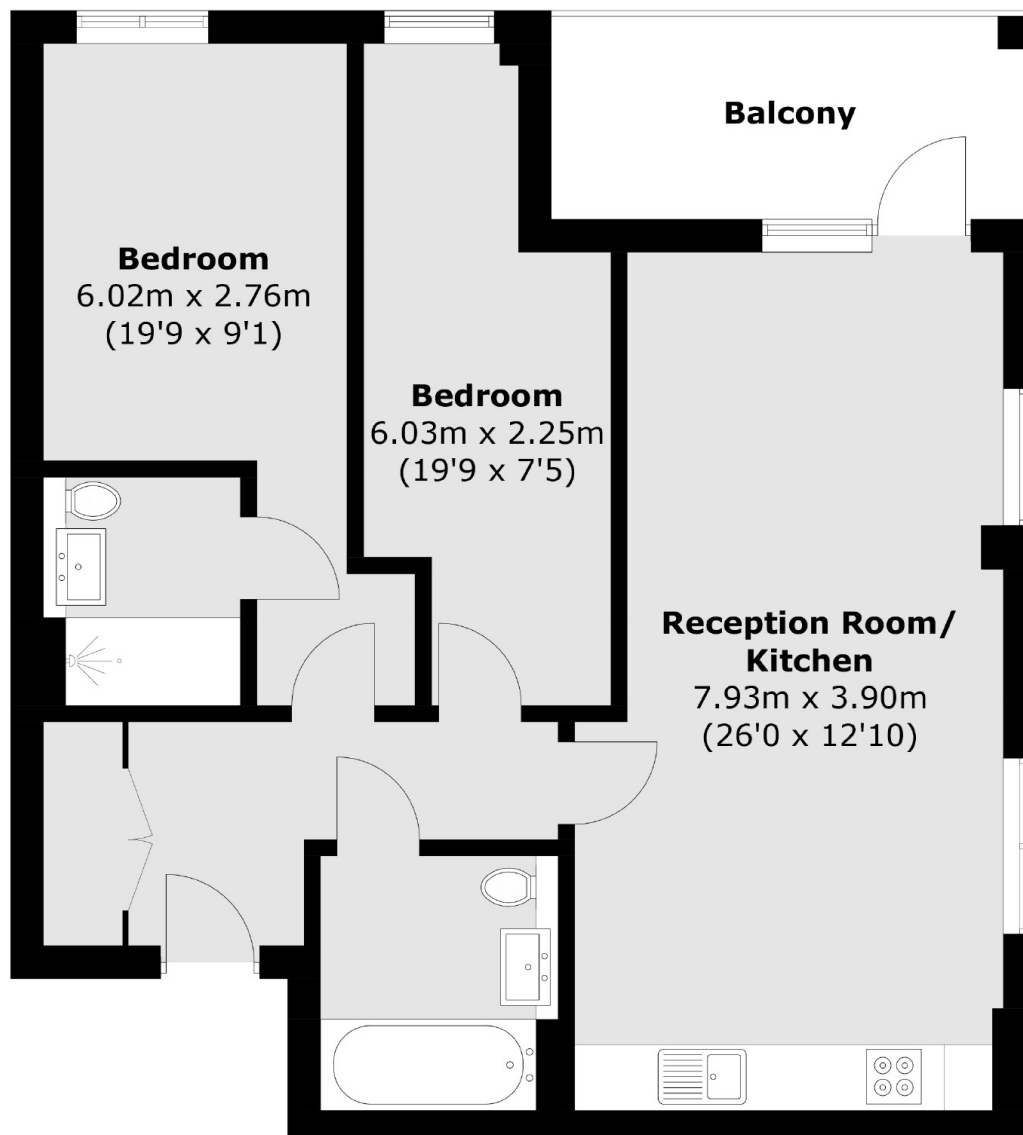
A two bedroom apartment situated on the twelfth floor of a new built complex offering open plan kitchen living, balcony and communal terrace.

This apartment is just a three minute walk from Southall Station, offering quick access to London Paddington, Bond Street, Canary Wharf, and easy travel to/from Heathrow via the Elizabeth Line.

### Features

- Two Bedrooms
- Two Bathrooms
- Balcony
- Communal Garden
- No Parking
- Elizabeth Line Access

Healum Avenue,  
Southall, UB2



Total area (approx.): 73.0 sq. m (785.4 sq. ft)  
Balcony: 8.1 sq. m (87.2 sq. ft)

**Dexters**

Northfields  
140 Northfield Avenue  
London  
W13 9SB  
Lettings  
020 8545 8589

Energy Rating: B. We aim to make our particulars both accurate and reliable. However they are not guaranteed; nor do they form part of an offer or contract. If you require clarification on any points then please contact us, especially if you're traveling some distance to view. Please note that appliances and heating systems have not been tested and therefore no warranties can be given as to their good working order.

 **RICS** | Regulated  
Estate Agent  
and Letting Agent

dexters.co.uk