



Buckland Crescent, NW3

£1,500,000

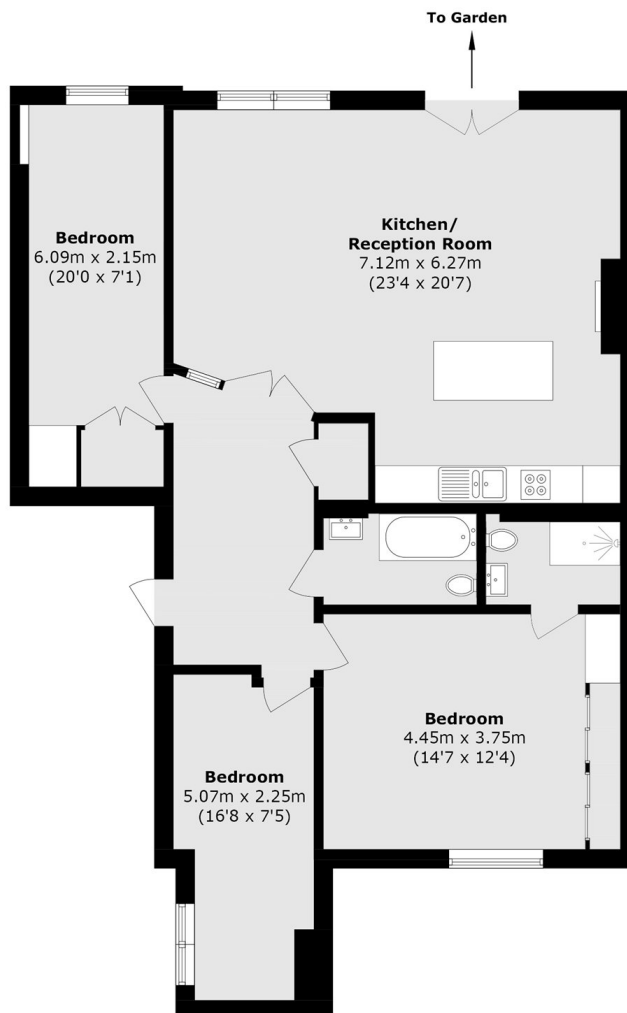
An elegant three bedroom, two bathroom apartment featuring direct access to a communal garden and a bright open plan living space with wood flooring throughout. The property offers a contemporary kitchen with integrated appliances, generous bedroom accommodation including a principal suite, and secure entry.

Located in the heart of Belsize Park, the property is moments from the cafés, restaurants, and boutiques of Haverstock Hill and England's Lane. Hampstead Heath and Primrose Hill are both within easy reach, offering extensive green open space. Transport links include Swiss Cottage underground station (Jubilee line) and Belsize Park underground station (Northern line).

Features

- Three Bedrooms
- Two Bathrooms
- Chain Free
- Secure Private Entrance
- Communal Garden
- Long Lease

Buckland Crescent, London, NW3



Total Area (approx.): 102.4 sq. m (1102.2 sq. ft)