



EARDLEY CRESCENT, SW5

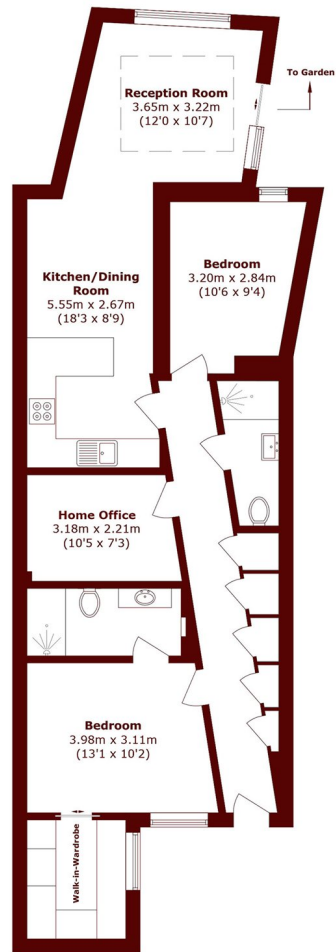
£800,000

This spacious 2-bedroom garden apartment located in a prime Victorian building. It features a bright modern well-proportioned reception room with an open-plan kitchen, two double bedrooms, 2 bathrooms, 1 en-suite,

Share of freehold
Private garden
Private entrance

2 bedrooms
2 bathrooms
Quiet tree-lined street

STEP INSIDE EARDLEY CRESCENT



Lower Ground Floor

Total area (approx.): 85.5 sq. m (920.3 sq. ft)

Earls Court
020 7590 0800

Energy Rating: C We aim to make our particulars both accurate and reliable. However, they are not guaranteed; nor do they form part of an offer or contract. If you require clarification on any points then please contact us, especially if you're traveling some distance to view. Please note that appliances and heating systems have not been tested and therefore no warranties can be given as to their good working order

MARSH &
PARSONS