

for sale

£220,000



Ground Floor Flat North Street Downend BRISTOL BS16 5SG

A beautifully proportioned period ground floor flat offering spacious accommodation and a versatile layout. Comprising a generous open-plan kitchen/living room, two bedrooms, family bathroom and garden. Ideal for first-time buyers, downsizer or investors alike.

Ground Floor Flat North Street Downend BRISTOL BS16 5SG

Entrance Hall

A welcoming entrance hall providing access to all accommodation with space for coats and shoes, creating an inviting first impression.

Kitchen/Living Room

19' 4" Max x 8' 1" Max (5.89m Max x 2.46m Max)

A bright and spacious open-plan living area featuring ample room for both lounge and dining furniture. The fitted kitchen offers a range of wall and base units with complementary work surfaces, inset sink and space for appliances, creating an ideal space for everyday living and entertaining.

Bedroom One

15' 3" Max x 10' 6" Max (4.65m Max x 3.20m Max)

A generous double bedroom featuring an attractive bay window which fills the room with natural light. Offering ample space for a range of bedroom furniture.

Bedroom Two

8' 5" x 7' 3" (2.57m x 2.21m)

A well-proportioned second bedroom, ideal as a guest room, child's bedroom or home office, with space for bedroom furnishings.

Bathroom

8' 2" x 5' 6" (2.49m x 1.68m)

Fitted with a three-piece suite comprising a panelled bath with shower over, wash hand basin and low-level WC. Finished with practical tiling and offering a bright, functional space.

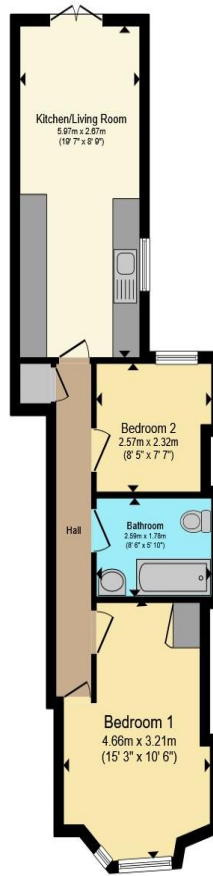
Rear Garden

Laid mainly to lawn with timber fencing.









Total floor area 45.3 m² (488 sq.ft.) approx

This floor plan is for illustrative purposes only. It is not drawn to scale. Any measurements, floor areas (including any total floor area), openings and orientation are approximate. No details are guaranteed, they cannot be relied upon for any purpose and they do not form part of any agreement. No liability is taken for any error, omission or misstatement. A party must rely upon its own inspection(s). Powered by www.propertybox.io



To view this property please contact Connells on

T 0117 956 9555

E emersonsgreen@connells.co.uk

2 The Village Emerson Way Emersons Green
BRISTOL BS16 7AE

Property Ref: EME307202 - 0003

Tenure:Leasehold EPC Rating: Awaited

Council Tax Band: A Service Charge: Ask Agent

Ground Rent: Ask Agent

view this property online

connells.co.uk/Property/EME307202

This is a Leasehold property with details as follows; Term of Lease 999 years from 29 Sep 1983. Should you require further information please contact the branch. Please Note additional fees could be incurred for items such as Leasehold packs.

1. MONEY LAUNDERING REGULATIONS Intending purchasers will be asked to produce identification documentation at a later stage and we would ask for your co-operation in order that there will be no delay in agreeing the sale. 2. These particulars do not constitute part or all of an offer or contract. 3. The measurements indicated are supplied for guidance only and as such must be considered incorrect. Potential buyers are advised to recheck measurements before committing to any expense. 4. We have not tested any apparatus, equipment, fixtures, fittings or services and it is in the buyers interest to check the working condition of any appliances.

Connells Residential is registered in England and Wales under company number 1489613, Registered Office is Cumbria House, 16-20 Hockliffe Street, Leighton Buzzard, Bedfordshire, LU7 1GN. VAT Registration Number is 500 2481 05.

see all our properties at www.connells.co.uk | www.rightmove.co.uk | www.zoopla.co.uk