

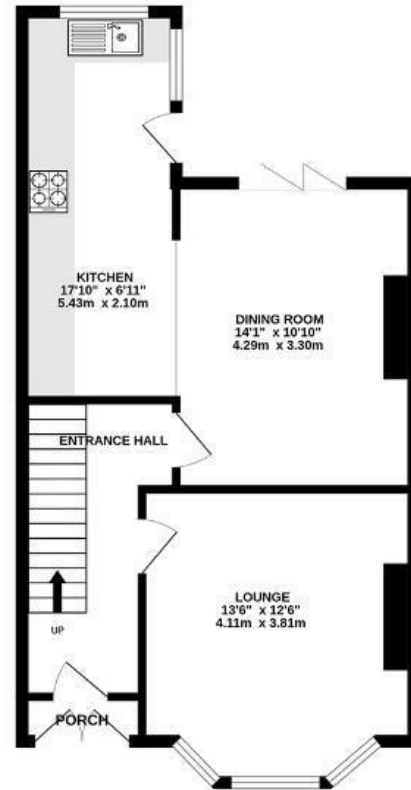


Everest Road FISHPONDS

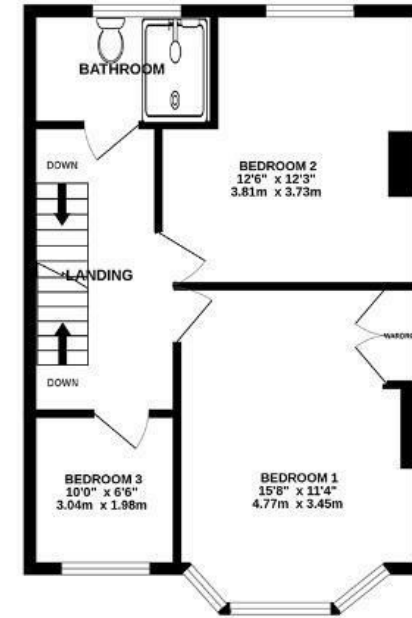
APPROXIMATE FLOOR AREA
112 SQM / 1202 SQFT



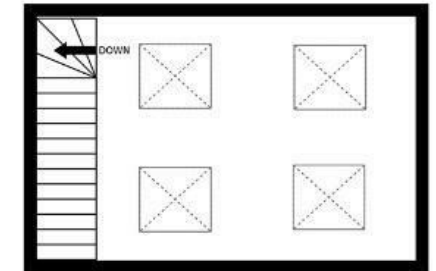
GROUND FLOOR



FIRST FLOOR



LOFT ROOM



Boardwalk

Everest Road

FISHPONDS, BRISTOL



£600,000



3 Bedrooms



BS16 2BX



1 Bathrooms

"This is a friendly street with the big field into the park at the end of the road, neighbours often organise meet ups and playing out events for families. There is even a micro-brewery on the corner for local, home made bread."

