



## WOODLAND CRESCENT, SE10

£1,375,000

Semi-detached modern house  
Four bedrooms  
Two bathrooms  
Secure allocated parking space  
Moments from Greenwich park  
Energy rating: c

@marshandparsons  
marshandparsons.co.uk

MARSH &  
PARSONS

# ABOUT THE PROPERTY

Set back within a tranquil and small gated community and one of only four houses, a stone's throw from Greenwich's royal park comes this semi-detached modern house featuring a secure allocated off-street parking space, private rear garden and direct entrance onto Maze Hill.

Maze Hill station and Greenwich park are both moments away making this a fantastic location for commuters. There is a wonderful choice of supermarkets, gyms, coffee shops and riverside pubs. North Greenwich station is a short bus ride away and Greenwich town centre is a short walk where you will find the covered market, Greenwich pier and Cutty Sark DLR station.







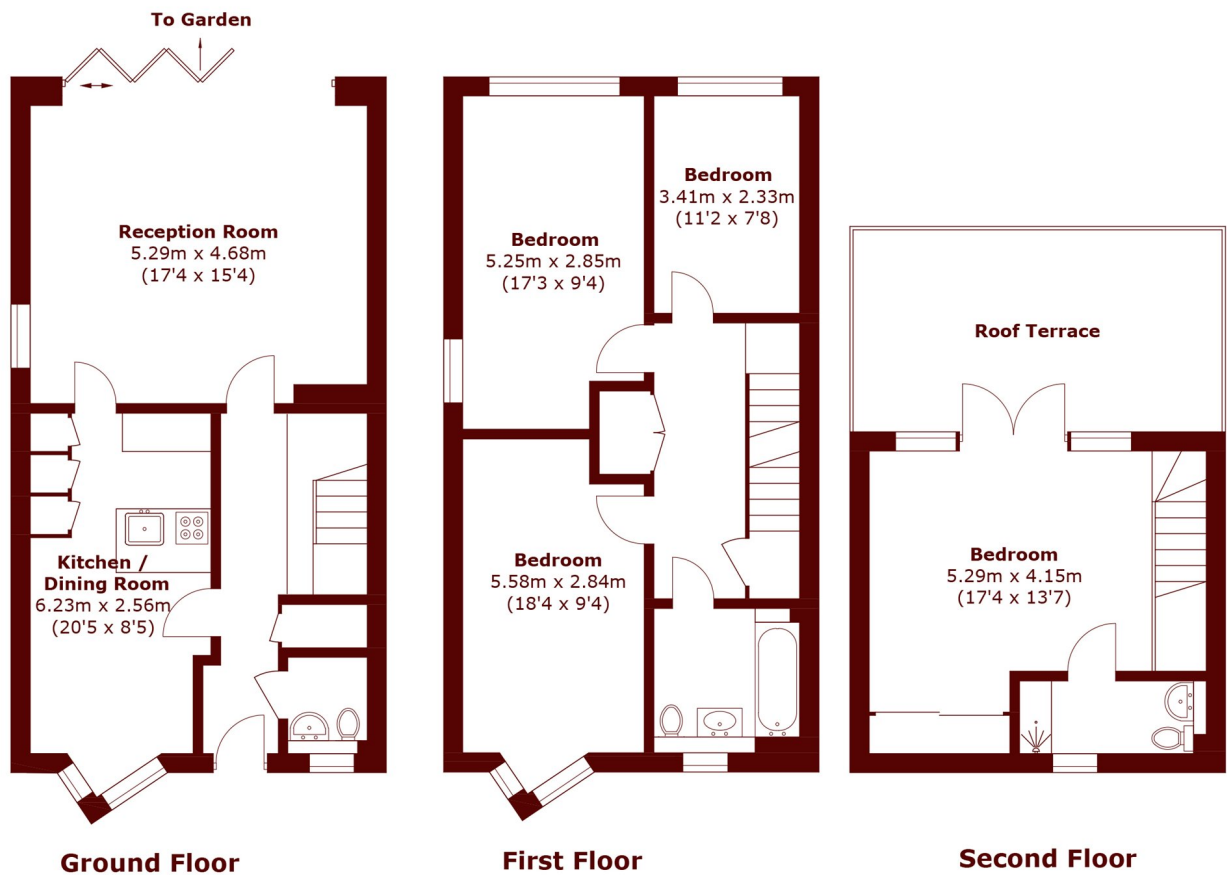
# FURTHER DETAILS

The interior briefly comprises a spacious living room, a kitchen/diner, four double bedrooms, an en suite shower room, roof terrace coming off the top floor bedroom and a family bathroom.

The private rear garden is a good size and benefits from having its own side access gate. There is also a guest WC on the ground level. There is ample storage throughout the house and the owner is selling with no onward chain.



# STEP INSIDE WOODLAND CRESCENT



Total area (approx.): 135.9 sq. m (1,462.7 sq. ft)  
Roof Terrace (approx.): 18.3 sq. m (197 sq. ft)

Greenwich  
020 8312 8312

Energy Rating: C We aim to make our particulars both accurate and reliable. However, they are not guaranteed; nor do they form part of an offer or contract. If you require clarification on any points then please contact us, especially if you're traveling some distance to view. Please note that appliances and heating systems have not been tested and therefore no warranties can be given as to their good working order

MARSH &  
PARSONS