



Montgomery Court

St. Thomas Road, W4

£311.54 per week
(£1,350 pcm)

A spacious purpose built flat located in the heart of the Grove Park area of Chiswick, with 2 double bedrooms, good size reception with dining area and patio doors onto balcony. Close to Chiswick Mainline station and local shops and restaurants.



Montgomery Court

St. Thomas Road, W4

- ****VIDEO TOUR AVAILABLE****
- Ground floor 2 double bedroom flat
- Located in the heart of the Grove Park area of Chiswick
- Fitted kitchen including dishwasher and bathroom
- Communal gardens and access to off street parking
- EPC rating: C



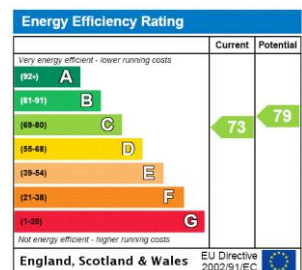
****VIDEO TOUR AVAILABLE**** Chestertons are please to offers this spacious purpose built flat located in the heart of the Grove Park area of Chiswick.

The property comprises comprises fitted kitchen including dishwasher and bathroom, spacious reception room with dining area and doors to private balcony area, 2 double bedrooms and ample storage. The apartment block also offers communal gardens and access to off street parking.

Ideally situated for access to local shops on Chiswick High Road and just a few minutes to Chiswick mainline station (Waterloo in 20 minutes) Chiswick Park station (District line) is also just a 10 minutes walk, the flat is also ideal for access to major Road links A4 / M4.

Tenure: Leasehold

Additional tenant charges apply (fees apply to non-AST tenancies only)
 Tenancy Agreement Fee: £300
 References per Tenant/Guarantor: £60
 Inventory check (approx. £100 – £250 inc. VAT)
[chestertons.com/property-to-rent/applicable-fees](https://www.chestertons.com/property-to-rent/applicable-fees)



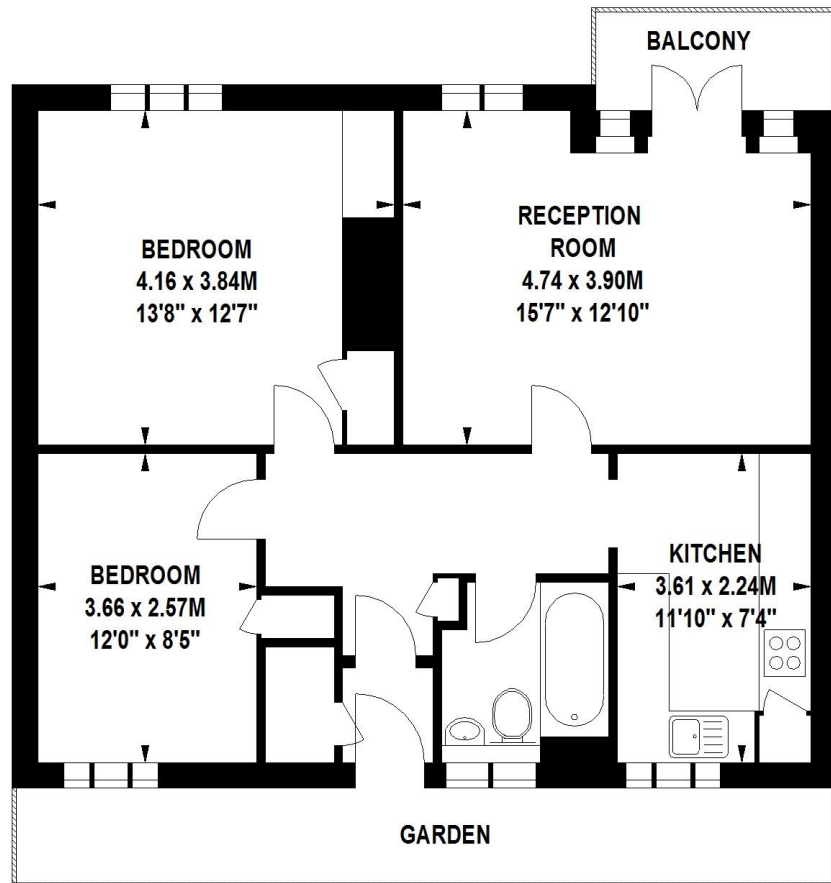
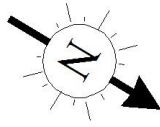
Chestertons Chiswick Lettings

155 Chiswick High Road
 Chiswick
 London
 W4 2DT
chiswick.lettings@chestertons.com
 02087473133
[chestertons.com](https://www.chestertons.com)

Montgomery Court, W4

Approximate gross internal area

67.26 sq m / 724 sq ft



Ground Floor

The floor plan is not to scale and measurements and areas shown are approximate and therefore should be used for illustrative purposes only.

The plan has been prepared in accordance with the RICS code of Measuring Practice and whilst we have confidence in the information produced, it must not be relied on.

If there is any aspect of particular importance, you should carry out or commission your own inspection of the property.

Copyright of FeaturePRO.

