



HOLLAND ROAD, W14

£800,000

Three Bedrooms
Private Garden
Two Bathrooms
Wooden Flooring
Communal Garden Access
Prime Location

@marshandparsons
marshandparsons.co.uk

MARSH &
PARSONS

ABOUT THE PROPERTY

A beautiful three bedroom flat with a private garden which leads into a serene private communal garden; a dream apartment for alfresco dining and sundowners.

Holland Road is a short walk from the amenities of Holland Park Avenue, the Westfield shopping and leisure development, and High Street Kensington.





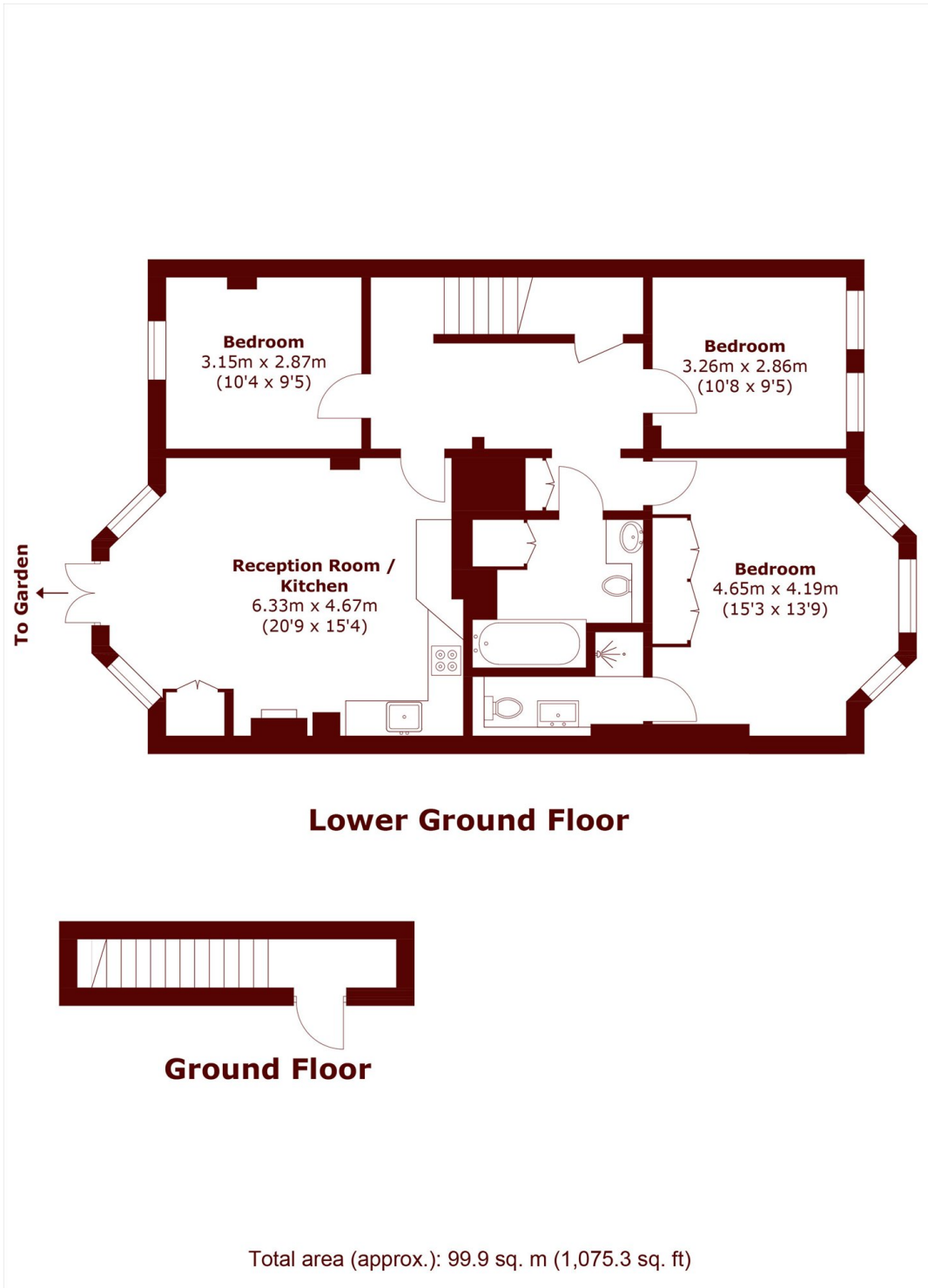


FURTHER DETAILS

With three double bedrooms this large apartment offers spacious, flexible living and is ideally located for Kensington and Holland Park. Featuring a stylish open-plan kitchen and living area room, principle bedroom with ensuite bathroom, two further double bedrooms and a family bathroom. A further benefit includes a private garden and direct access to beautiful communal gardens.



STEP INSIDE HOLLAND ROAD



Holland Park
020 7605 6890

Energy Rating: C We aim to make our particulars both accurate and reliable. However, they are not guaranteed; nor do they form part of an offer or contract. If you require clarification on any points then please contact us, especially if you're traveling some distance to view. Please note that appliances and heating systems have not been tested and therefore no warranties can be given as to their good working order

MARSH &
PARSONS