

# ethos

LETTINGS



## Flat 6 Hill House, HOVE, BN3 1JD

£1,600 PCM

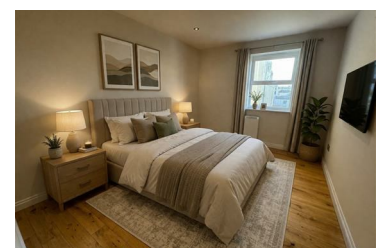


[ SHARERS ACCEPTED | CITY CENTRE LOCATION | WATER RATES INCLUDED ]

This fantastic three bedroom apartment is situated in the sought after central Hove location between beautiful Palmeira Square and Lansdowne Place. Step out of the front door and you are immediately among the hustle and bustle of Western Road with numerous cafes, shops and restaurants. Hove seafront is only a short walk away, ideal for sunny afternoons. If you are a working professional this flat is conveniently situated with great links via bus into Brighton City Centre and the train station.

Situated in a well-maintained building with the added benefit of a lift, this flat is beautifully decorated throughout with modern wooden flooring. The property briefly comprises of an entrance hallway leading through to a generously sized open plan kitchen lounge with two big windows flooding the room with light. The kitchen has white high gloss units and is equipped with all appliances including fridge freezer, washing machine and

- Three Bedroom Apartment
- Double Glazing
- Unfurnished
- Sharers Accepted
- Double Bedrooms
- Available 30th January



8a Ship Street, Brighton, East Sussex, BN1 1AD

Tel: 01273326614 Email: [kim@ethoslettings.com](mailto:kim@ethoslettings.com) [www.ethoslettings.com](http://www.ethoslettings.com)