

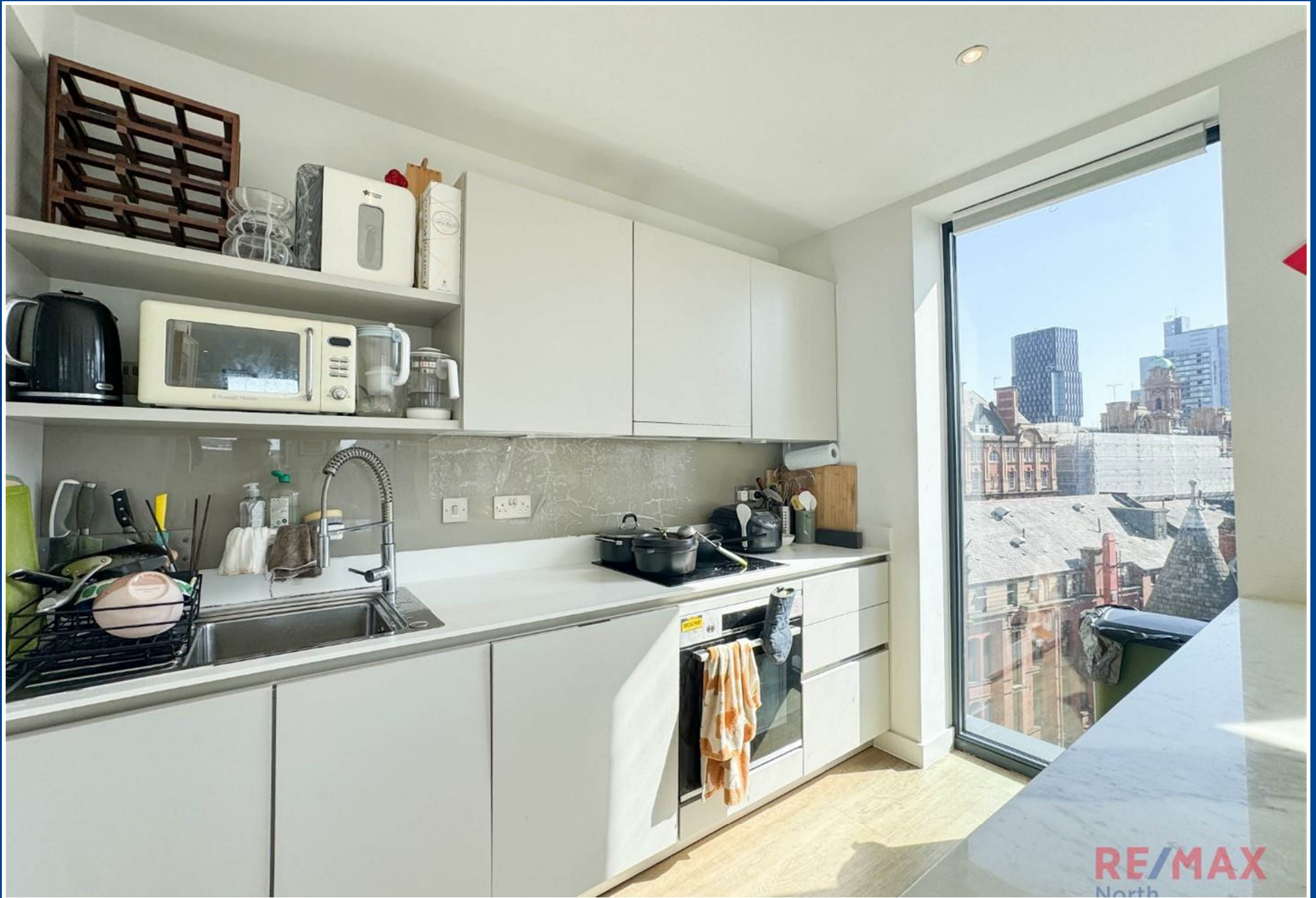


RE/MAX
North



46 Whitworth Street, Manchester, M1 3BD
Asking price £400,000





RE/MAX
North

46 Whitworth Street

Manchester, M1 3BD

- UNDERGROUND PARKING INCLUDED
- Open-plan living area
- City Centre Location
- EV charging
- Gym on-site
- Finished to a high standard
- Fully integrated kitchen
- Breathtaking city views
- 24-hour concierge service
- Close to transport links

Nestled in the heart of Manchester, on Whitworth Street, this exquisite two-bedroom apartment in the newly constructed Manchester New Square offers a perfect blend of modern living and urban convenience. Spanning an impressive 807 square feet, this high specification residence is situated on the seventh floor, providing stunning views of the vibrant cityscape.

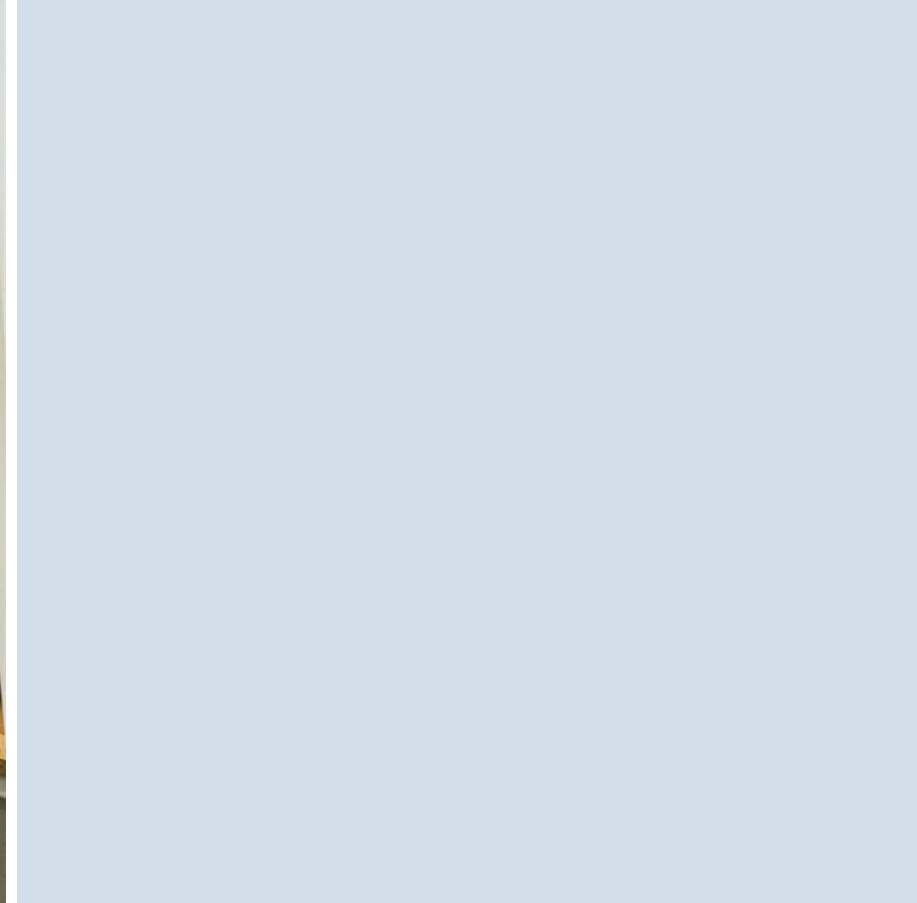
Upon entering, you are welcomed into a bright and airy open plan living area that seamlessly integrates with a fully equipped kitchen, featuring premium marble finishes that exude elegance. The thoughtful design includes utility and storage cupboards, ensuring that the space remains uncluttered and functional.

The principal bedroom is a true retreat, boasting a generous fitted wardrobe and a luxurious en suite bathroom. The second bedroom is equally spacious, making it ideal for guests. A well-appointed family bathroom completes the accommodation, offering both style and practicality.

One of the standout features of this apartment is the highly sought-after underground parking, providing added convenience in the bustling city centre.

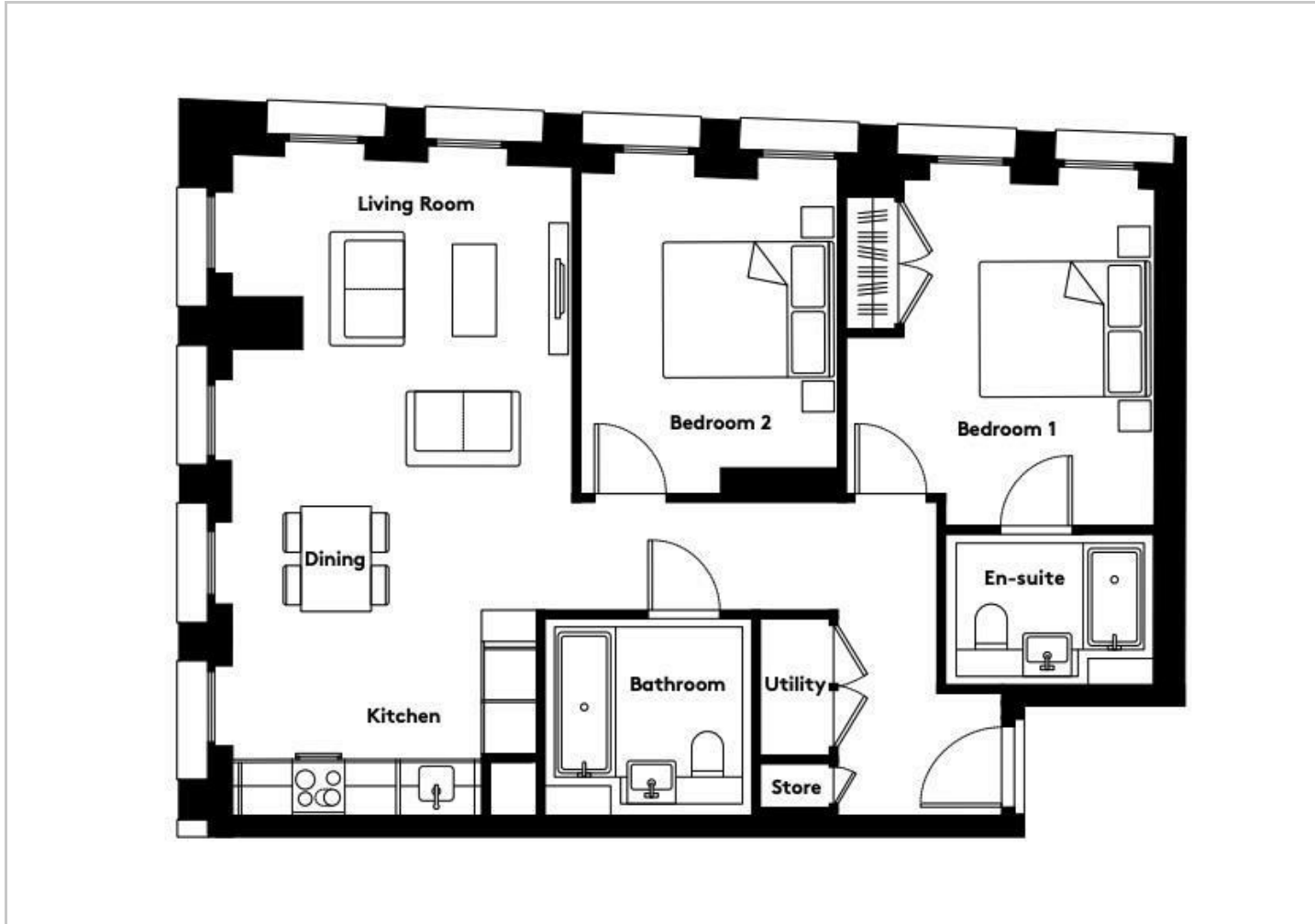
Manchester New Square is ideally located between Manchester Piccadilly and Oxford Road stations, placing you within easy reach of an array of exceptional amenities, including shops, restaurants, and cultural attractions. This property is not just a home; it is a lifestyle choice in one of the most dynamic areas of Manchester. Whether you are looking to invest or seeking a new place to call home, this apartment is a remarkable opportunity not to be missed.







Floor Plans



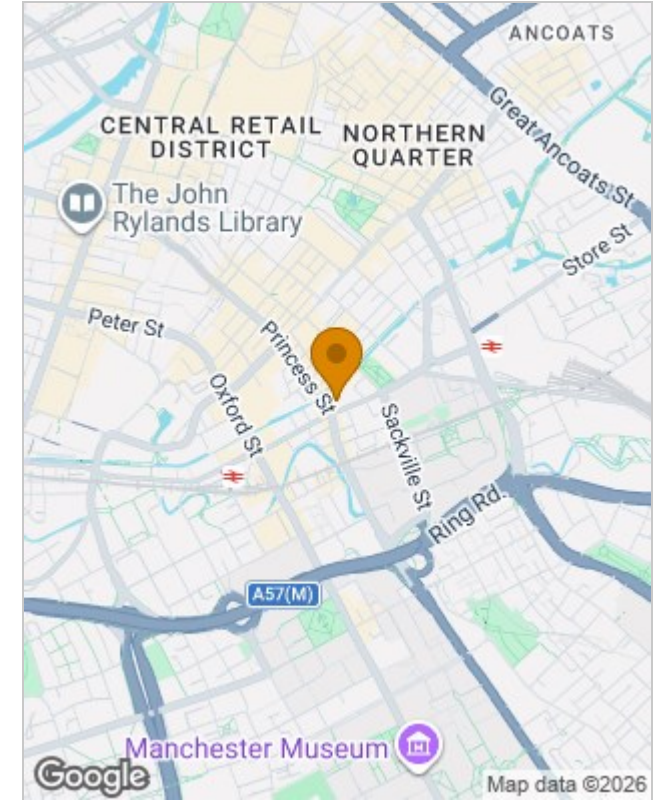
Viewing

Please contact our RE/MAX North Sales Office on +44 (0) 1618 040807 if you wish to arrange a viewing appointment for this property or require further information.

The particulars are set out as a general outline only for the guidance of intended purchasers or lessees, and do not constitute, any part of a contract. Nothing in these particulars shall be deemed to be a statement that the property is in good structural condition or otherwise nor that any of the services, appliances, equipment or facilities are in good working order. Purchasers should satisfy themselves of this prior to purchasing.

94 Phoebe Street, Salford, Greater Manchester, M5 3PH
Tel: +44 (0) 1618 040807 Email: remax.north@remax.co.uk remax.co.uk

Location Map



Energy Performance Graph

