



Spring Grove, W4

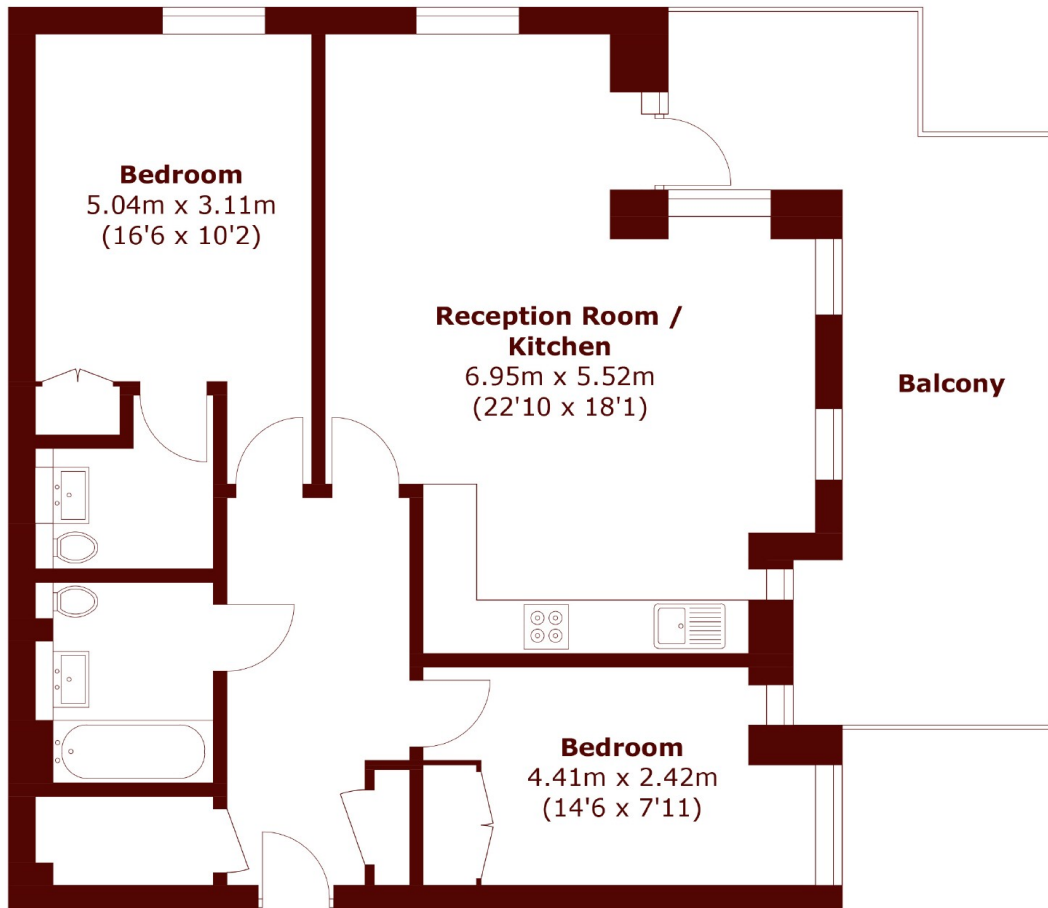
£590,000

 2  2  1  C

• Two Bedroom

• Two Bathroom

• Wrap Around Balcony



Total area (approx.): 77.4 sq. m (833.1 sq. ft)
Balcony: 21.6 sq. m (232.5 sq. ft)

Marsh & Parsons Chiswick

34-38 Turnham Green
Terrace, London, W4 1QP
020 8994 2556