



**CAMBRIDGE GARDENS LONDON W10**  
**£675 PER WEEK** AVAILABLE 29/11/2025

**Hamptons**  
THE HOME EXPERTS

# { THE PARTICULARS

Cambridge Gardens London W10

£675 Per Week  
Furnished

-  2 Bedrooms
-  1 Bathroom
-  1 Reception

## Features

- Roof Terrace, - Open Plan Living Room /  
Kitchen, - Two Bedrooms, - Modern  
Bathroom, - Council Tax Band D

## Council Tax

Council Tax Band D

Hamptons  
301 Westbourne Grove  
Notting Hill, London, W11 2QA  
020 7034 0405  
nottinghilllettings@hamptons.co.uk  
www.hamptons.co.uk

## The Property

This stunning property is located in a very charming well maintained period villa and has been recently refurbished to exacting standards. The apartment comprises two double bedrooms , a lovely and bright living room and a spectacular PRIVATE ROOF TERRACE with amazing views over the Notting Hill roof tops. The apartment would ideally suit a professional couple looking for a home with outside space, and room to work from home if needed.



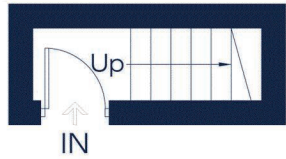
## Hamptons

THE HOME EXPERTS

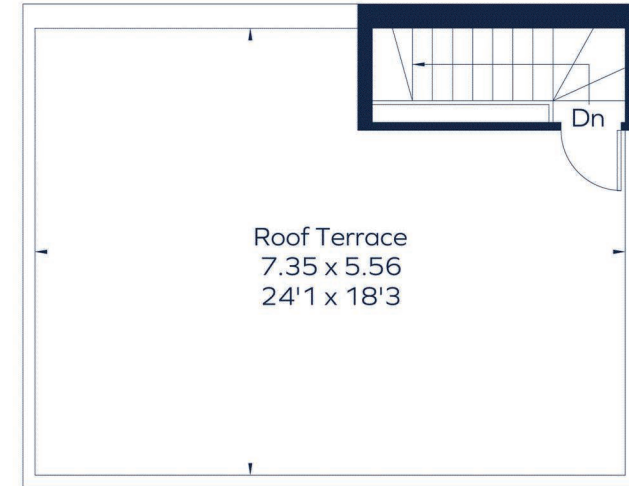
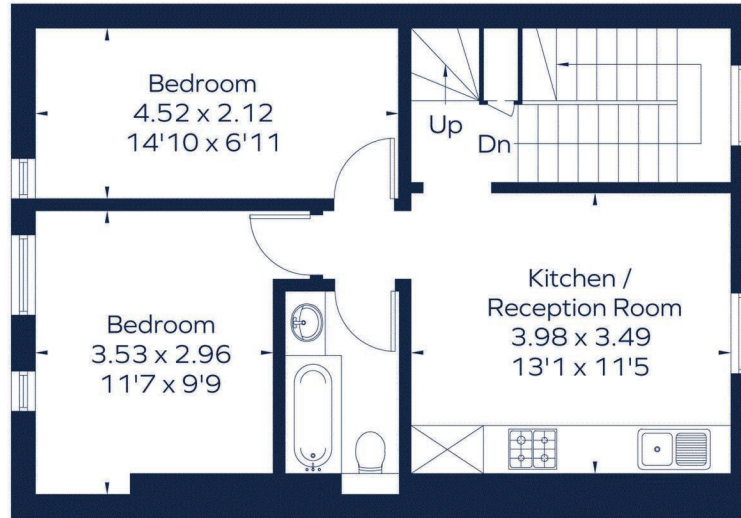
Register with us to be the first to know when new properties that fit your criteria become available and avoid missing out on properties that have recently let.

If you're a landlord with a similar property to let, make the most of our 100,000+ professional applicant database by getting in touch.

Approximate Area = 54.8 sq m / 590 sq ft  
Including Limited Use Area (0.4 sq m / 4 sq ft)



[Dashed box] = Reduced head height below 1.5m



Second Floor

Third Floor

Fourth Floor

Surveyed and drawn in accordance with the International Property Measurement Standards (IPMS 2: Residential)  
fourwalls-group.com 272371

**For Clarification**

We wish to inform prospective tenants that we have prepared these particulars as a general guide and they have been confirmed as accurate by the landlord. We have not verified permissions, nor carried out a survey, tested the services, appliances and specific fittings. Room sizes are approximate and measurement figures rounded: they are taken between internal wall surfaces and therefore include cupboards/shelves, etc. Accordingly, they should not be relied upon for

carpets and furnishings. It should also be noted that all fixtures and fittings, carpeted, curtains/blinds, kitchen equipment and garden statuary, whether fitted or not, are deemed removable by the landlord unless specifically itemised with these particulars. Please enquire in office or on our website for details on holding deposit and tenancy deposit figures.

