



jordan fishwick

DIDSBURY
Hesketh Avenue



Hesketh Avenue, Didsbury, M20 2QW

Guide Price £675,000



The Property

A beautifully presented, FOUR DOUBLE BEDROOM, Victorian terrace property offering a SUPERB LEVEL of living space over FOUR FLOORS, coupled with a courtyard rear garden and an ideal location which is within a short stroll of DIDSBURY VILLAGE. 1774 SQ FT. The accommodation offers a great blend of original characteristics alongside today's modern comforts, in outline :- Covered porch, entrance hall with wood floor that continues to the lounge with walk-in bay window and log burner, separate dining room, extended kitchen over 21ft with a comprehensive range of units and French doors opening to the rear garden, two double bedrooms and luxury four-piece bathroom at first floor level, with a further two double bedrooms and separate shower room on the second floor. In addition there is a generous basement with two main chambers and useful utility area.

Directions

M20 2QW



- Beautiful Victorian terrace
- Living space over four floors (1774sq ft)
- Four double bedrooms
- Spacious luxury bathroom & separate shower room
- Extended breakfast kitchen over 20ft
- Living room with log burner
- Separate dining room
- Useful basement with utility space
- Walled courtyard garden
- Superb location close to Didsbury Village

Postcode - M20 2QW

EPC Rating - D

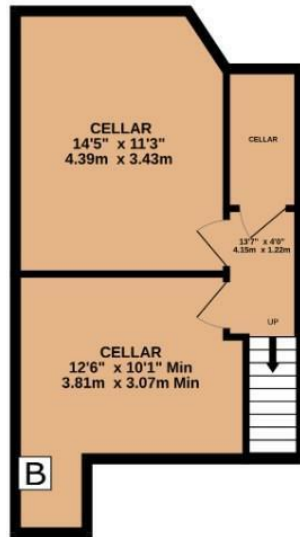
Floor Area - 1774.00 sq ft

Local Authority - Manchester City Council

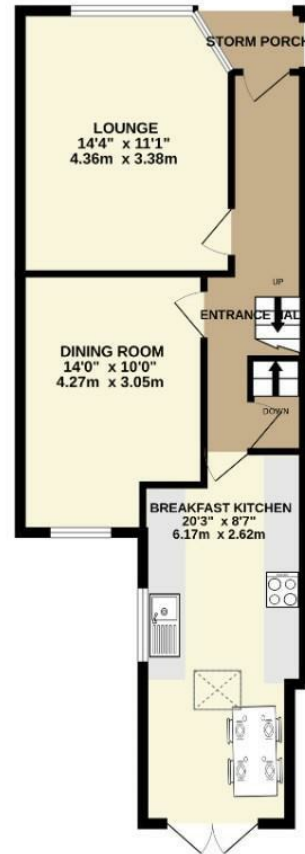
Council Tax - E



BASEMENT
377 sq.ft. (35.0 sq.m.) approx.



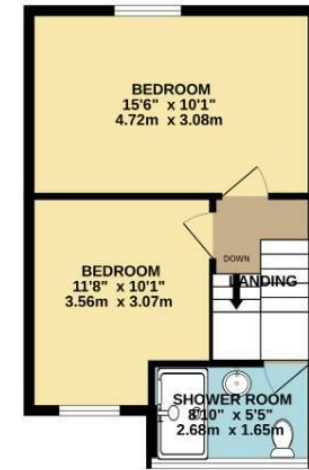
GROUND FLOOR
573 sq.ft. (53.2 sq.m.) approx.



1ST FLOOR
462 sq.ft. (43.0 sq.m.) approx.



2ND FLOOR
362 sq.ft. (33.6 sq.m.) approx.



TOTAL FLOOR AREA : 1774 sq.ft. (164.8 sq.m.) approx.
Measurements are approximate. Not to scale. Illustrative purposes only
Made with Metropix ©2025



These particulars are believed to be accurate but they are not guaranteed and do not form a contract. Neither Jordan Fishwick nor the vendor or lessor accept any responsibility in respect of these particulars, which are not intended to be statements or representations of fact and any intending purchaser or lessee must satisfy himself by inspection or otherwise as to the correctness of each of the statements contained in these particulars. Any floorplans on this brochure are for illustrative purposes only and are not necessarily to scale.

Offices also at: Wilmslow, Macclesfield, Hale, Sale, Chorlton, Glossop, Manchester & Salford

757-759 Wilmslow Road, Didsbury Village, Manchester

0161 445 4480

didsbury@jordanfishwick.co.uk
www.jordanfishwick.co.uk