



**BURNSIDE COTTAGE, KEILS
JURA, PA60 7XP**

OFFERS IN THE REGION OF £130,000

Stewart Balfour and Sutherland are delighted to bring to the market this attractive 1 bedroom cottage which oozes character and charm. This beautiful little property sits in a generous garden and is just a short walk from the local shop, bar and other limited facilities. CALL NOW TO ARRANGE YOUR VIEWING.

Stewart Balfour & Sutherland
SBS Cameron Macaulay
SBS Edingtons WS
SBS Property Shop

BURNSIDE COTTAGE KEILLS

- Charming coastal cottage
- Ideal country escape
- Potential to extend
- Large gardens with burn
- Friendly local community
- Characterful interiors
- Perfect holiday rental
- Located in Keills, Jura

Nestled in the charming hamlet of Keills, Craighouse on the picturesque island of Jura, this delightful coastal cottage presents an idyllic escape to the countryside. With its characterful features, this property is perfect for those seeking a tranquil retreat or an attractive holiday rental opportunity.

The cottage boasts a unique charm that captures the essence of coastal living, making it a perfect sanctuary for relaxation. Surrounded by large gardens that include a gentle burn, the outdoor space offers a serene environment for enjoying the natural beauty of the area. The generous outside space provide ample room for outdoor activities or simply unwinding in the fresh air.

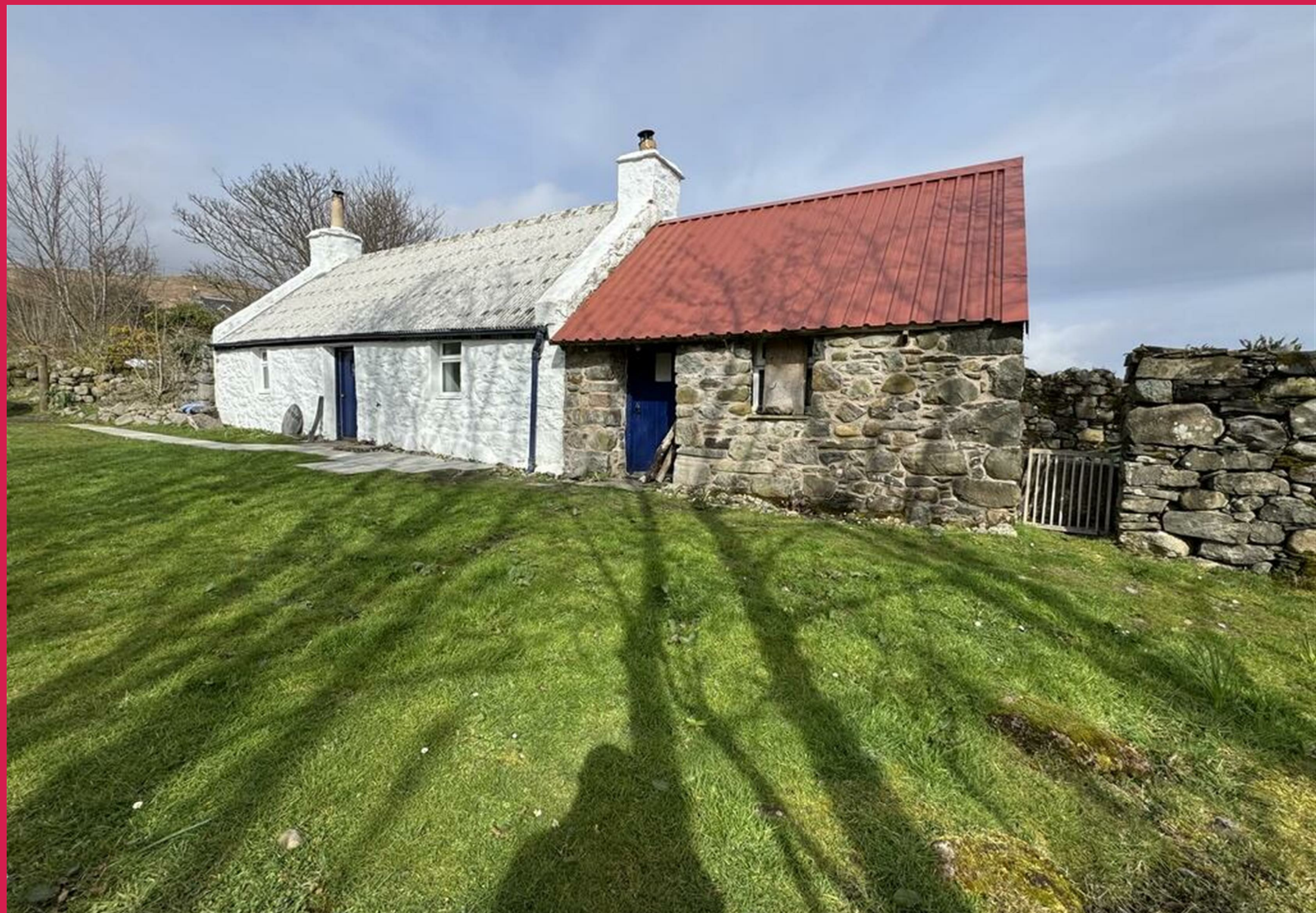
One of the standout features of this property is the potential to extend into the adjoining outbuilding, allowing for further development to suit your needs. Whether you envision additional living space, a studio, or a workshop, the possibilities are limited only by your imagination.

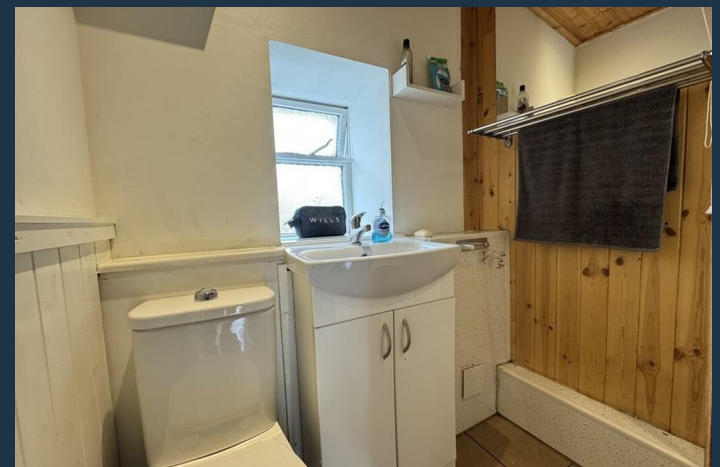
The local community is known for its warmth and friendliness, making it easy to feel at home in this close-knit environment. With stunning coastal views and a peaceful atmosphere, this cottage is not just a house; it is a lifestyle choice that offers a perfect blend of comfort and charm.

In summary, this picture-perfect coastal cottage in Keills, Craighouse, is an exceptional opportunity for anyone looking to embrace the beauty of rural life on Jura. With its character, potential for expansion, and welcoming community, it is a property that truly deserves your attention.







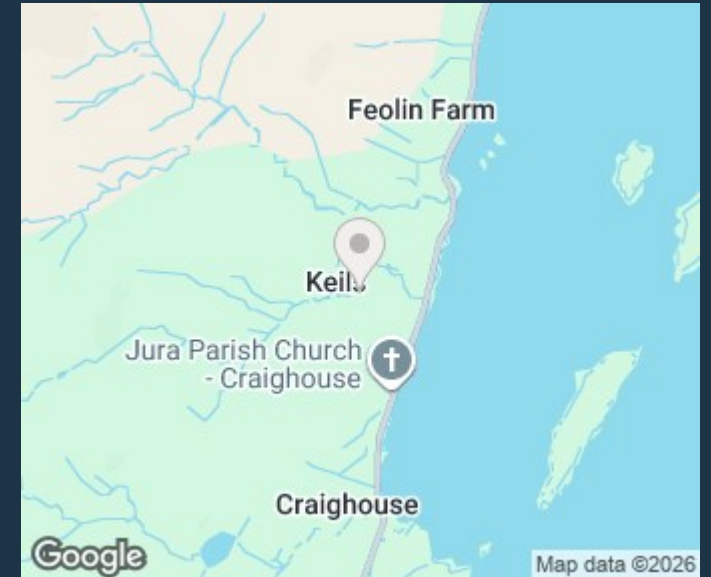


Ground Floor

Approx. 56.0 sq. metres (603.1 sq. feet)



Total area: approx. 56.0 sq. metres (603.1 sq. feet)



NOTE: Offers should be submitted in formal legal terms with the selling agents at their Property Shop. A closing date for offers may be set and accordingly interested parties who wish to proceed further should register their interest with the selling agents. The sellers will not be obliged to proceed to a closing date and reserve the option to sell the property to any party or to withdraw same from the market at any time. These particulars have been carefully prepared after due enquiry, are provided as a guide only, but do not form part of any contract. Measurements have been taken by a sonic tape machine. While the agents consider that information and opinions expressed are fair and accurate, interested parties must not

Campbeltown
Kinloch Hall
Lochend Street
PA28 6DL
Campbeltown
Argyll
PA28 6DL

01586553737
sales@sbsproperty.co.uk
sbsproperty.co.uk

Stewart Balfour & Sutherland
SBS Cameron Macaulay
SBS Edingtons WS
SBS Property Shop