



Dalston Lane, E8

£525,000

A two double bedroom apartment set on the first floor of this Victorian conversion. The property features an open plan kitchen/living room with space to dine, high ceilings, large sash window and bespoke shelving. There is wooden flooring throughout, built in storage and modern family bathroom.

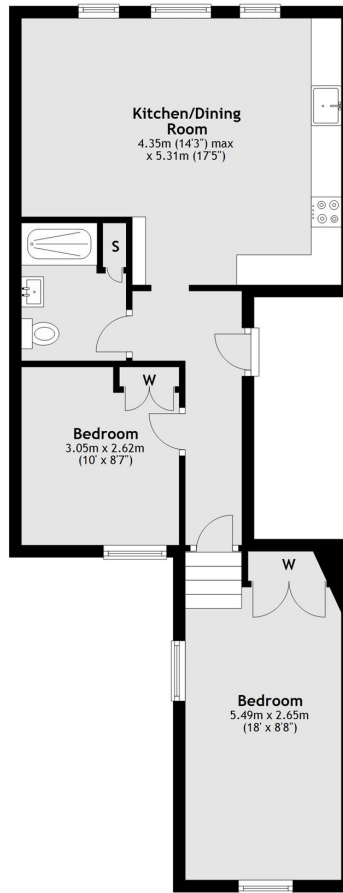
Dalston Lane is well positioned between Hackney Downs and Dalston Kingsland Overground Station offering easy access to the City. There are many shops, cafés and amenities to choose from including Broadway Market, Wilton Way, Ridley Road & Mare Street. It is under half a mile from London Fields and its tennis courts and Lido.

Features

- Victorian Conversion
- Two Double Bedrooms
- Wooden Floors
- High Ceilings
- Open Plan
- Close to Amenities

Dalston Lane, London, E8

First Floor



Total area: approx. 54.1 sq. metres (582.1 sq. feet)