



**HENDERSON
CONNELLAN**
ESTATE AGENTS

49 North Cape Walk, Corby, Northamptonshire, NN18 9DQ

£190,000

3 1 1



"Light and Bright"

This end terrace house is being offered for sale with a light interior which is well presented throughout. The property is being offered for sale with NO CHAIN. Conveniently located near bayed and on-street parking, the property is easily accessible and comes with an attractive low maintenance rear enclosed garden. Inside the smart interior comprises entrance hall, guest WC, living room, smart fitted kitchen/dining room and there is a utility room. Upstairs there is a modern wet/shower room and there are three bedrooms. The property benefits from a gas fired central heating system and uPVC double glazed windows.

Description:

A well-presented end terrace house with a smart interior, available with no onward chain.

Located within the Danesholme area, the property offers easy access to bayed and on-street parking. There is a local primary school and other local conveniences.

The ground floor accommodation comprises an entrance hall leading to a guest WC. There is a comfortable living room which features a solid wood floor.

There is a stylish kitchen/dining room which is fitted with a range of wall and base level units with work surfaces incorporating a sink with drainer and mixer tap with ceramic tiled wall surrounds. There is a floor standing cooker and space and plumbing for a washing machine. There is also a convenient utility room providing extra storage and addition front elevation access.

Upstairs, you will find three bedrooms and a modern wet room. Bedroom One benefits from built-in wardrobes.

The property benefits from a gas-fired central heating system and uPVC double-glazed windows.

Outside:

The property boasts an attractive, low-maintenance, enclosed rear garden.

Room Measurements:

Kitchen/Diner - 4.75m x 2.49m (15'7" x 8'2")

Utility Room - 2.87m x 1.52m (9'5" x 5'0")

Living Room - 4.47m x 3.58m (14'8" x 11'9")

WC - 1.83m x 0.91m (6'0" x 3'0")

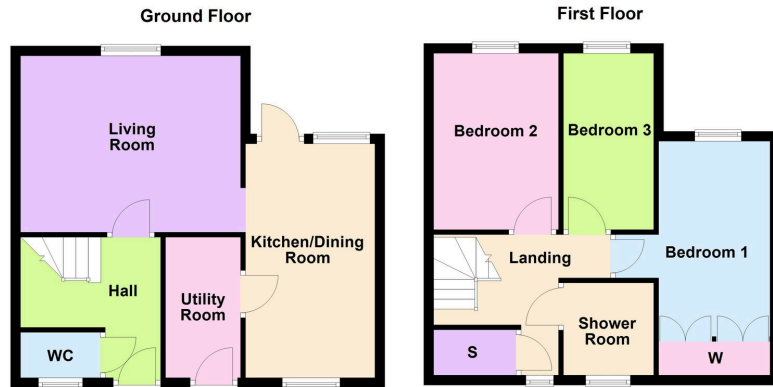
Bedroom 1 - 3.99m x 2.54m (13'1" x 8'4")

Bedroom 2 - 2.57m x 3.58m (8'5" x 11'9")

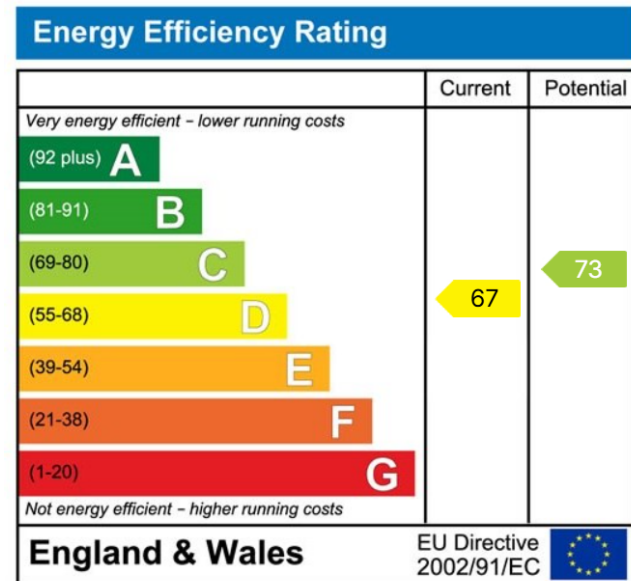
Bedroom 3 - 1.57m x 3.58m (5'2" x 11'9")

Shower Room - 1.93m x 1.91m (6'4" x 6'3")





- Well Presented End Terrace House
- Enclosed Rear Garden
- Three Bedrooms
- Stylish Fitted Kitchen/Dining Room
- Modern Wet Room
- Ground Floor Guest WC
- Utility Room
- Gas Fired Central Heating System and UPVC Double Glazing
- Smart Interior
- No Chain



Disclaimer: These particulars do not form part of any offer or contract and should not be relied upon as statements or representations of fact. Any areas, measurements of distances are approximate. The text, photographs and plans are for guidance only and are not necessarily comprehensive.

10 Spencer Court, Corby, Northamptonshire, NN17 1NU

