

10 Anchorside Close, Chorlton, Manchester, M21 8AR



**JP&Brimelow**  
ESTATE AGENTS

# Offers In The Region Of £240,000

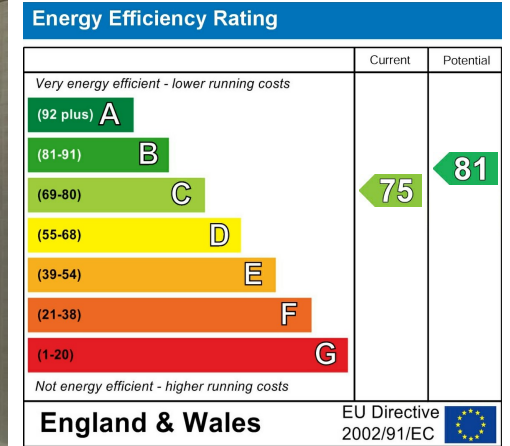


**\*\*VIDEO TOUR AVAILABLE\*\*** A modern and bright, TWO DOUBLE BEDROOM Ground Floor apartment, Nestled in a sought-after residential cul-de-sac just off Barlow Moor Road and close to Chorlton Park, this property is set within well-maintained communal gardens. It is also within easy walking distance of Chorlton centre and Beech Road, home to a variety of independent bars, restaurants, and local amenities. Well-proportioned throughout, the property consists of a private entrance, a generous lounge leading to a fitted kitchen, two double bedrooms and a three-piece shower room. Further features include gas central heating and an allocated parking space. Ideal purchase for a first-time buyer. Early internal inspection highly recommended.



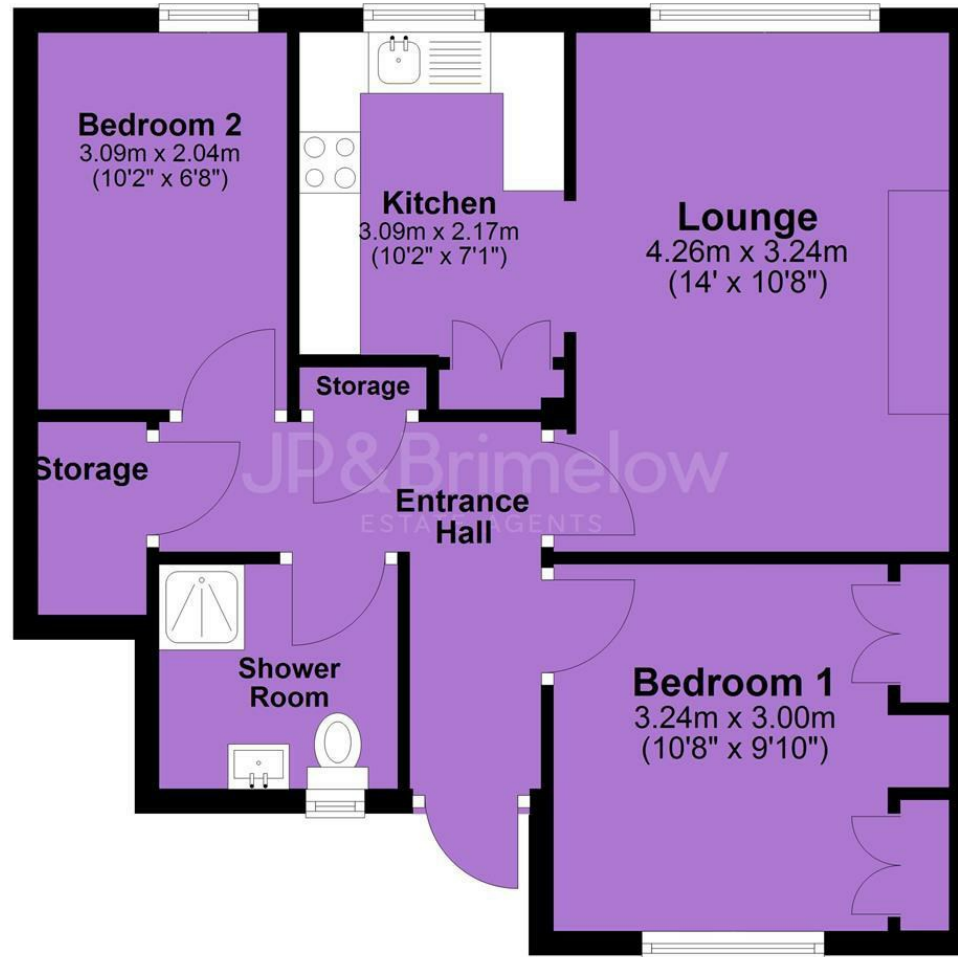


## EPC Chart



Tenure: **Leasehold** Council Tax Band: **B**

## Ground Floor



JP & Brimelow Estate Agents Ltd  
430 Barlow Moor Road, Manchester, M21 8AD  
Tel: 0161 8822233  
E: sales@jpbrimelow.co.uk www.jpandbrimelow.co.uk



**JP & Brimelow**  
ESTATE AGENTS

NOTICE: JP & Brimelow Estate Agents Ltd for themselves and for the vendors or lessors of this property whose agents they are give notice that:

- (i) the particulars are set out as a general outline only for the guidance of intending purchasers or lessees, and do not constitute, nor constitute part of, an offer or contract;
- (ii) all descriptions, dimensions, references to the condition and necessary permissions for use and occupation, and other details are given in good faith and are believed to be correct but any intending purchasers or tenants should not rely on them as statements or representations of fact but must satisfy themselves by inspection or otherwise as to the correctness of each of them;
- (iii) no person in the employment of JP & Brimelow Estate Agents Ltd has any authority to make or give any representation or warranty whatever in relation to this property.

jpanbrimelowstateagents

@jpandbrimelow