



LANG TOWN
& COUNTRY

Harwood Villa, Harwood Avenue, Tamerton Foliot, Plymouth, Devon, PL5 4NU



Guide Price £575,000



Lang Town and Country are delighted to offer to the market Harwood Villa, an exceptional four-bedroom detached bungalow set in the heart of Tamerton Foliot.

Tamerton Foliot is a fantastic village location and is readily accessible to the business areas on the northern side of Plymouth including Derriford Hospital and Nuffield Health. Dartmoor National Park lies within about three miles to the north. Tamerton Foliot is considered a dog walkers paradise with walks along the well-known beauty spot 'Tamerton Creek' at the junction of the Tamar and Tavy Rivers. The village is served by its own amenities including, shops, pubs and take away restaurant's. The village is proud to boast its own quaint annual village carnival/fete, which attracts people from surrounding areas and provides much pleasure for the villagers.

Surrounded by peaceful countryside, this home offers a serene retreat from the pace of everyday life. Four generously sized double bedrooms provide plenty of space for both family and guests, with the master bedroom benefiting from its own private en-suite.

Approaching the property, you'll be greeted by expansive walled gardens that create a sense of privacy and exclusivity. Beautiful views of the surrounding landscape serve as a constant reminder of the tranquillity just beyond your doorstep.

A gated driveway offers ample parking for multiple vehicles, complemented by a detached double garage for added convenience and security. The spacious lounge strikes the perfect balance between comfort and style, featuring sliding doors that open onto a south-facing terrace, an inviting spot for soaking in natural light and enjoying seamless indoor-outdoor living. The outdoor space continues with a vast lawned garden bordered with herbaceous borders and an area for home growing vegetables at the bottom.

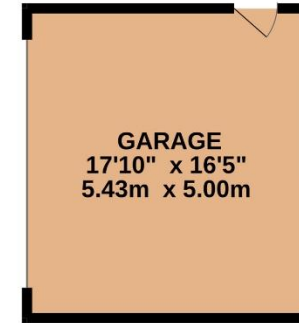
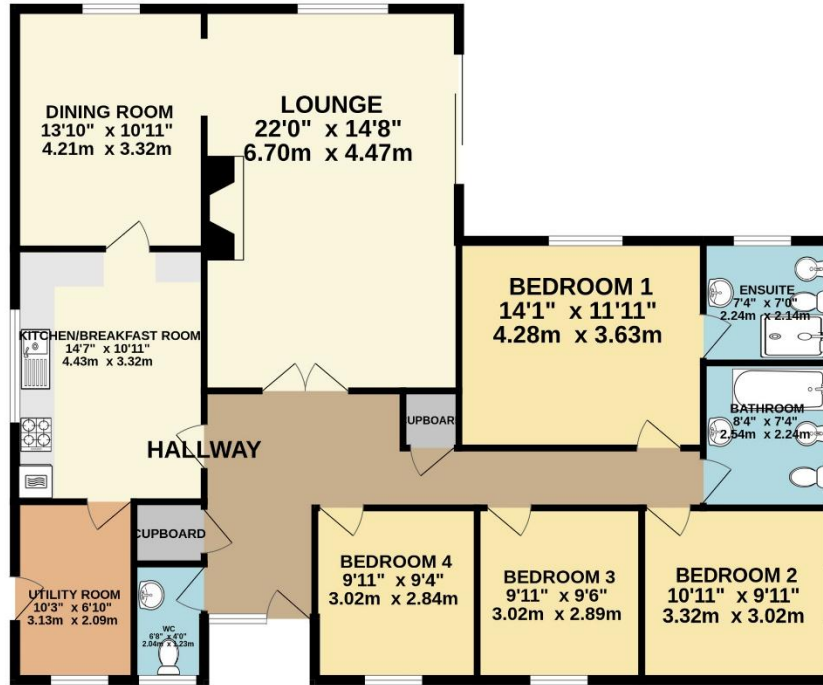
The generous kitchen is ideal for culinary enthusiasts, complete with ample storage and adjoining utility room. While the property would benefit from modernisation, it presents a fantastic opportunity to tailor the space to your own tastes and lifestyle.

With its distinctive features, south westerly facing gardens and sought-after location, Harwood Villa offers the potential for a truly luxurious and comfortable way of living. Whether you're seeking a peaceful sanctuary or a welcoming space to entertain, this home is ready to meet your needs.



To view this property call Lang Town & Country Estate Agents on **01752 256000**.





TOTAL FLOOR AREA : 1797 sq.ft. (166.9 sq.m.) approx.

Whilst every attempt has been made to ensure the accuracy of the floorplan contained here, measurements of doors, windows, rooms and any other items are approximate and no responsibility is taken for any error, omission or mis-statement. This plan is for illustrative purposes only and should be used as such by any prospective purchaser. The services, systems and appliances shown have not been tested and no guarantee as to their operability or efficiency can be given.
Made with Metropix ©2025



Lang Town & Country
6 Mannamead Road
Plymouth
PL4 7AA
Tel: 01752 256000
Email: property@langtownandcountry.com
www.langtownandcountry.com

Lang Town & Country endeavour to ensure the accuracy of property details produced and displayed, we have not tested any apparatus, equipment, fixtures, fittings or services and so cannot verify that they are connected, in working order or fit for purpose. A buyer must check the availability of any property and make an appointment to view before embarking on any journey to see a property.

