

Chopwell Close, E15

£250,000

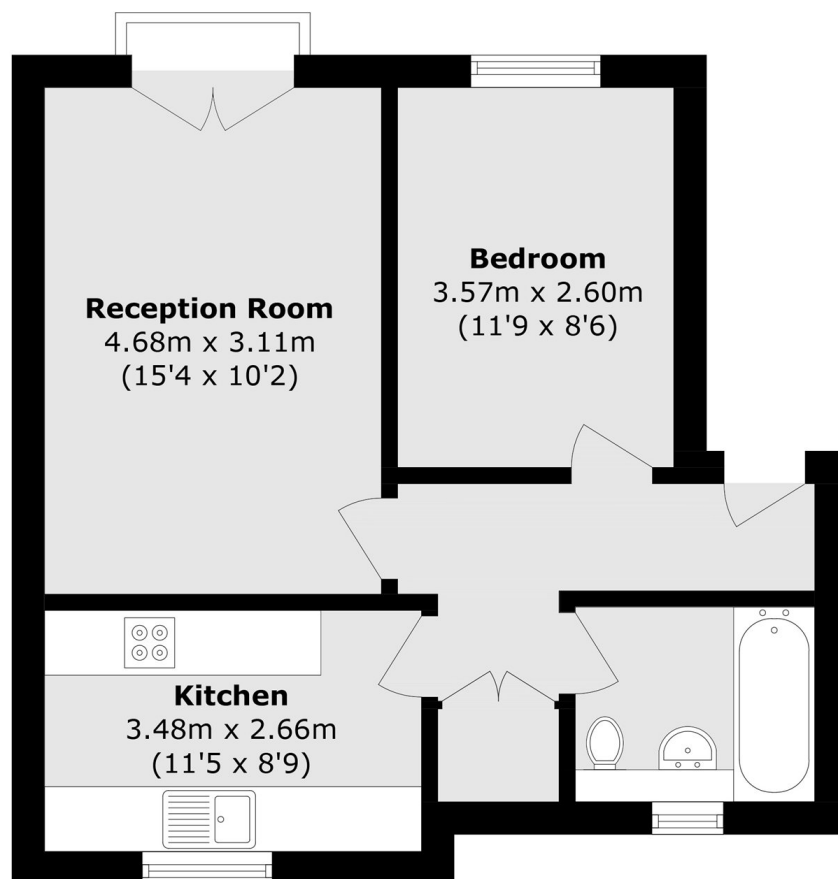
Offered to the market chain-free, this one-bedroom home is set within a private gated development. Chopwell Close is ideally located in the heart of Stratford, with easy access to Stratford City and Westfield, where residents can enjoy a wide range of local amenities and restaurants. The property also benefits from an allocated parking space.

Chopwell Close is ideally situated just 0.5 miles from Stratford Station, providing excellent transport links to the City and beyond.

Features

- 470 Square Feet
- One Bedroom
- Chain-Free
- Gated Development
- Allocated Parking
- Juliet Balcony

Chopwell Close, London, E15



Total area (approx.): 43.7 sq. m (470.3 sq. ft)