

**LONDON  
VICTORIA  
GROUPS** 



**LONDON  
VICTORIA  
GROUPS** 



**LONDON  
VICTORIA  
GROUPS** 



**LONDON  
VICTORIA  
GROUPS** 

## **Tabbard Apartments, East Acton Lane**

, London W3 7NU

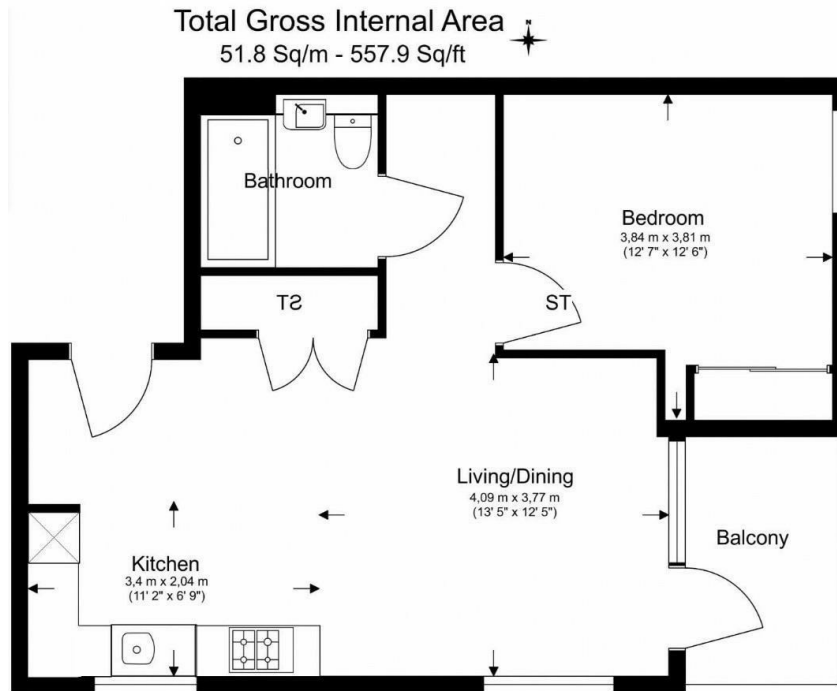
- One Double Bedroom with Built-In Wardrobes
- Private Balcony
- Communal Garden
- EPC-B
- Open-Plan Living, Dining, and Kitchen Area
- Full-Height Windows with Natural Light
- Excellent Transport Links via East Acton Station
- CTB-D

**£2,250 Per Month**



**LONDON  
VICTORIA  
GROUPS** 

Local Authority **Ealing**  
Council Tax Band **D**  
EPC Rating **B**



Floor Plan measurements are approximate and are for illustrative purposes only. While we do not doubt the floor plans accuracy, we make no guarantee, warranty or representation as to the accuracy and completeness of the floor plan.

**London Office Office**  
Spaces Victoria, 25 Wilton Road, Pimlico,  
London, SW1V 1LW

**Contact**  
020 3084 3094  
XL@londonvictoriagroups.co.uk  
www.londonvictoriagroups.co.uk

Agents Note: Whilst every care has been taken to prepare these particulars, they are for guidance purposes only. All measurements are approximate and for general guidance purposes only and whilst every care has been taken to ensure accuracy, they should not be relied upon and potential buyers/tenants are advised to recheck the measurements.

