

## Strathearn Avenue, TW2

£3,275 Per calendar month

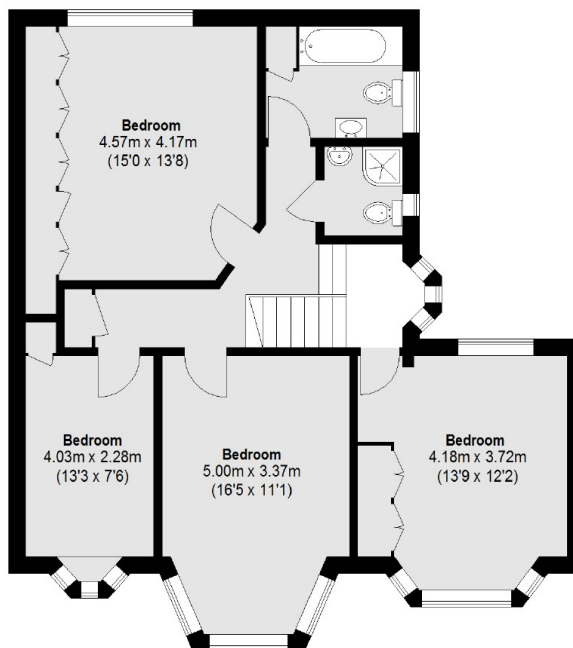
This large four bedroom home offers spacious accommodation throughout. The property offers three bathrooms, two reception rooms, a overly large garden and off-street parking for multiple cars. There is also the benefit of a garage for additional storage.

Strathearn Avenue is a highly sought after road next to Whitton high street where you will find a vast array of shops, cafés and restaurants. The mainline station with its fast link to London Waterloo is also on your doorstep.

### Features

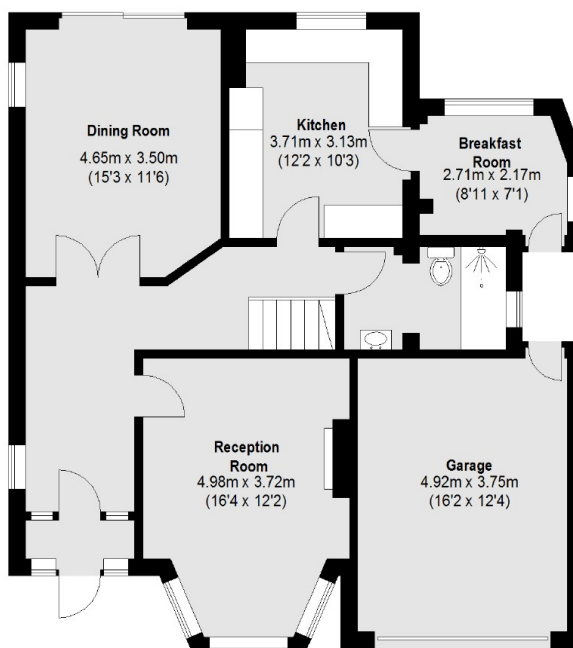
- Detached House
- Four Bedrooms
- Three Bathrooms
- Private Garden
- Garage
- Off-Street Parking

# Strathearn Avenue, Twickenham, TW2



First Floor

To Garden



Ground Floor

Total area (approx.): 154.22 sq. m (1660 Sq. ft)  
Garage: 18.83 sq. m (203 Sq. ft)

## Dexters

Twickenham  
84 Heath Road  
Twickenham  
TW1 4BW

Lettings  
020 8744 2233

Energy Rating: E. We aim to make our particulars both accurate and reliable. However they are not guaranteed; nor do they form part of an offer or contract. If you require clarification on any points then please contact us, especially if you're traveling some distance to view. Please note that appliances and heating systems have not been tested and therefore no warranties can be given as to their good working order.

 **RICS** | Regulated  
Estate Agent  
and Letting Agent

dexters.co.uk