

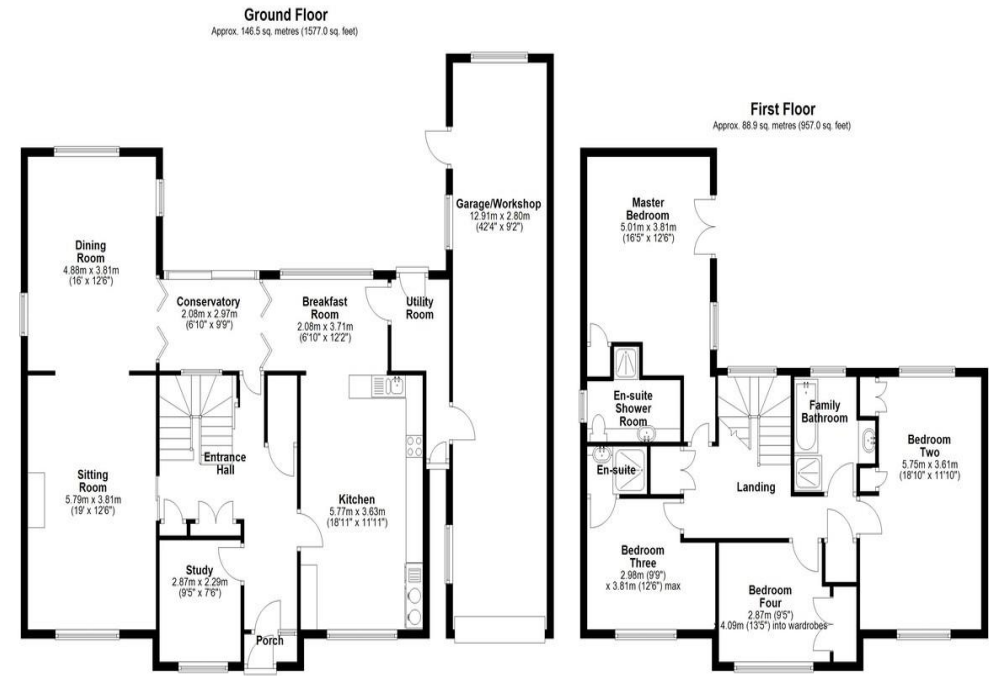


12 LODERSFIELD, LECHLADE, GL7 3DJ

ASKING PRICE OF £850,000

OFFERED FOR SALE WITH NO ONWARD CHAIN, SAMUEL MILES ARE PLEASED TO PRESENT THIS SUBSTANTIAL AND EXTENDED FOUR BEDROOM DETACHED FAMILY HOME OCCUPYING A GOOD SIZED GARDEN WITHIN THIS SOUGHT AFTER LOCATION IN LECHLADE UPON THAMES. THE GROUND FLOOR ACCOMMODATION COMPRISES A RECEPTION HALL, CLOAKROOM, SITTING ROOM, EXTENDED DINING ROOM, FITTED KITCHEN/FAMILY ROOM AND STUDY. UPSTAIRS ARE FOUR BEDROOMS

FURTHER ATTRIBUTES INCLUDE GAS CENTRAL HEATING AND UPVC DOUBLE GLAZING. TO THE OUTSIDE ARE SIZEABLE FRONT AND REAR GARDENS AND AN EXCEPTIONALLY LARGE TRIPLE LENGTH TANDEM LENGTH GARAGE/WORKSHOP. THIS PROPERTY IS SOLD WITH NO ONWARD CHAIN.



Total area: approx. 235.4 sq. metres (2534.0 sq. feet)

17 High Street, Highworth, Swindon,
Wiltshire, SN6 7AG

www.samuelmiles.co.uk
01793 861663
sales@samuelmiles.co.uk

Agents Note: Whilst every care has been taken to prepare these particulars, they are for guidance purposes only. All measurements are approximate and are for general guidance purposes only and whilst every care has been taken to ensure their accuracy, they should not be relied upon and potential buyers/tenants are advised to recheck the measurements