



## Balacclava Road, £130,000

- No onward chain
- In need of modernisation
- Elevated rear garden
- Ground floor bathroom
- Close to local amenities
- Great transport links
- EPC Rating: D



 2
  1
  2





## About the property

Offered to the market with no onward chain, this detached two-bedroom property on Balaclava Road presents an excellent opportunity for buyers looking to put their own stamp on a home. In need of modernisation, it offers huge potential to create a stylish and comfortable living space tailored to your taste.

The ground floor features two reception rooms and a ground floor bathroom, providing a flexible layout with plenty of scope for reconfiguration or improvement. Upstairs, you'll find two well-proportioned bedrooms with one bedroom leading to a dressing room.

Externally, the property benefits from an elevated rear garden, offering privacy and the chance to create a lovely outdoor space,

Located close to local amenities and boasting great transport links including local bus link, this home is ideal for those seeking a project in a convenient, well-connected area.



## Accommodation

Porch

Lounge

Dining Room

Bathroom

Kitchen

Landing

Bedroom 1

Dressing Room

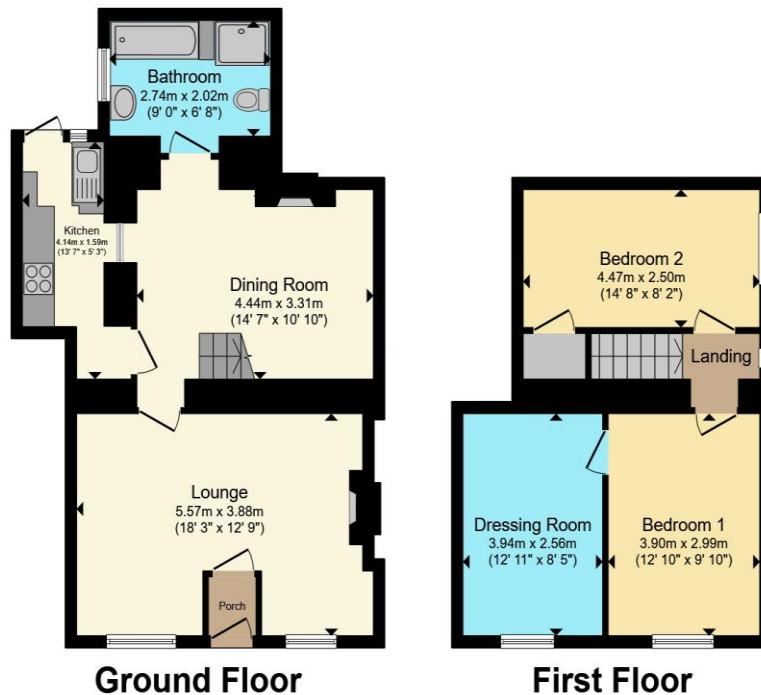
Bedroom 2



01685 722223

merthytydfil@peteralan.co.uk

## Floorplan



Total floor area 94.5 m<sup>2</sup> (1,017 sq.ft.) approx

This floor plan is for illustrative purposes only. It is not drawn to scale. Any measurements, floor areas (including any total floor area), openings and orientation are approximate. No details are guaranteed, they cannot be relied upon for any purpose and they do not form part of any agreement. No liability is taken for any error, omission or misstatement. A party must rely upon its own inspection(s). Powered by [www.propertybox.io](http://www.propertybox.io)



## Important Information

Note while we endeavour to make our sales details accurate and reliable, if there is any point which is of particular interest to you, please contact the office and we will be pleased to confirm the position for you. We have not personally tested any apparatus, equipment, fixtures, fittings or services and cannot verify they are in working order or fit for their purposes. Nothing in these particulars is intended to indicate that carpets or curtains, furnishings or fittings, electrical goods (whether wired or not). Gas fires or light fittings or any other fixtures not expressly included form part of the property offered for sale. This computer generated Floorplan, if applicable, is intended as a general guide to the layout and design of the property. It is not to scale and should not be relied upon for dimensions. Tenure: We cannot confirm the tenure of the property as we have not had access to the legal documents. The buyer is advised to obtain verification from their solicitor or surveyor.

Peter Alan Limited is registered in England and Wales under company number 2073153, Registered Office is Cumbria House, 16-20 Hockliffe Street, Leighton Buzzard, Bedfordshire, LU7 1GN. VAT Registration Number is 500 2481 05. For activities relating to regulated mortgages and non-investment insurance contracts, Peter Alan Limited is an appointed representative of Connells Limited which is authorised and regulated by the Financial Conduct Authority. Connells Limited's Financial Services Register number is 302221. Most buy-to-let

