



## Pitt Crescent, SW19

£480,000

A one double bedroom ground floor garden flat with it's own front door and a wrap around garden/patio space. There is a high specification throughout as well as a share of the freehold and a 999 year lease. Completion is estimated for Q2 2026.

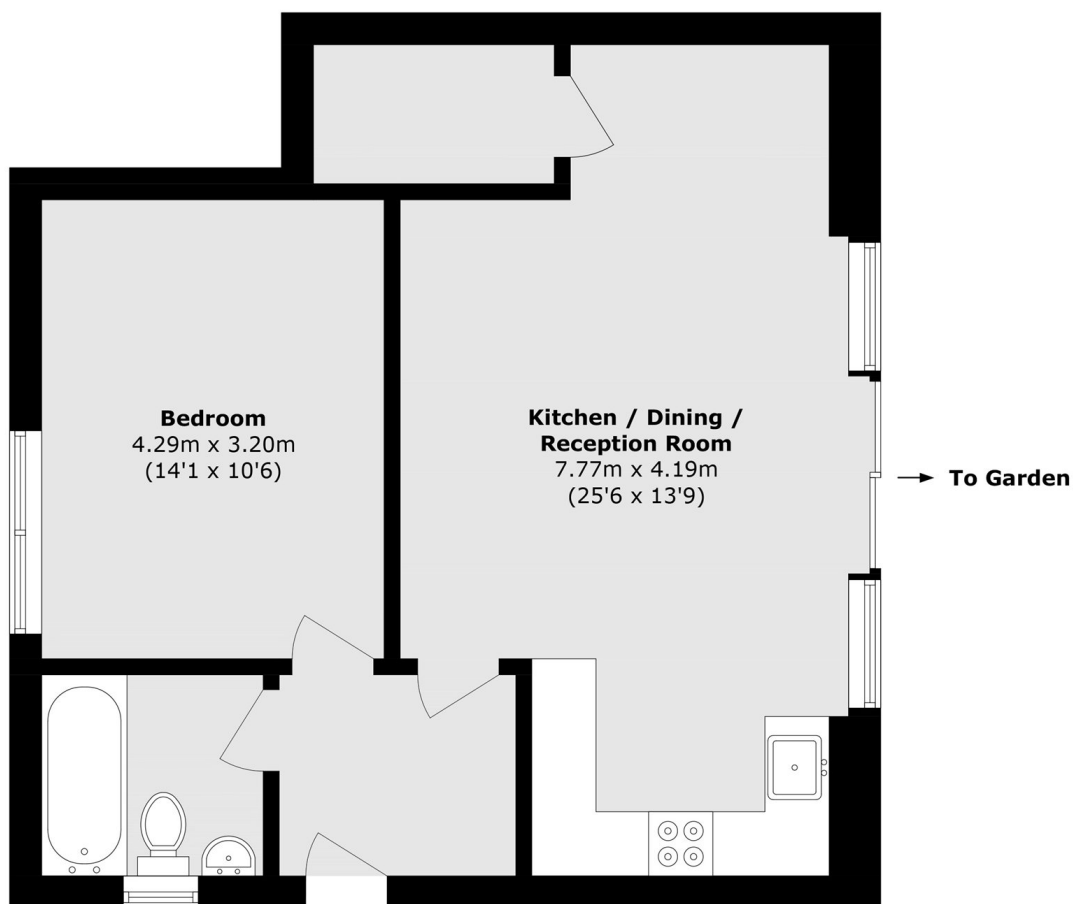
\* Please note - CGI imagery has been used to demonstrate the indicative final finish for the development \*

Wimbledon's unique blend of urban energy and suburban tranquillity provides an ideal setting for modern living. From artisan markets to scenic parks, the neighbourhood caters to a variety of lifestyles. Its excellent transport links ensure easy access to central London, making it a desirable location for those seeking both convenience and character.

### Features

- Private Wrap-Around Garden
- Own Front Door
- Share Of The Freehold
- One Double Bedroom
- Underfloor Heating
- Energy Efficient
- No Ground Rent

Pitt Crescent,  
London, SW19



Total area (approx.): 54.9 sq. m (590.9 sq. ft)