



Campbell Mews, Pine Drive, Southampton SO18 5RP

welcome to

Campbell Mews Pine Drive, Southampton

* GROUND FLOOR APARTMENT * TWO BEDROOMS * SPACIOUS LIVING ROOM * FITTED KITCHEN & SHOWER ROOM * PRIVATE PATIO AREA * COMMUNAL GROUNDS * RESIDENTS PARKING * GREAT LOCATION *

Entrance Porch

Communal entrance secure with trades button.

Entrance Hall

Access to all rooms, storage space, carpeted, electric heaters.

Lounge

15' 3" x 10' 9" (4.65m x 3.28m)

Carpeted, two electric heaters, double glazed patio doors leading to garden, access to;

Kitchen

7' 11" x 7' 5" (2.41m x 2.26m)

Wall and base cupboard units, space for freestanding fridge/freezer, washing machine, electric hob and oven, double glazed window to the side aspect, stainless steel sink and drainer.

Bedroom One

11' 11" x 9' 10" (3.63m x 3.00m)

Double glazed window to the side aspect, carpeted, electric heater.

Bedroom Two

10' 8" x 7' 5" (3.25m x 2.26m)

Double glazed window to the side aspect, carpeted, electric heater.

Shower Room

Double glazed window to the front aspect, shower cubicle, low level w/c, wash hand basin storage unit, towel rail.





Welcome to this inviting two-bedroom apartment, located on the ground floor and offering comfortable and convenient living exclusively for over-55s.

The home features a generous living room, offering plenty of space for relaxing or entertaining. Patio doors from the living room lead to the private patio area. The fitted kitchen provides practical, well-planned storage and workspace, while the two bedrooms offer flexible accommodation. A shower room completes the layout.



Campbell Mews boasts attractive communal grounds along with residents' parking for added convenience. With its friendly community atmosphere, practical layout, and excellent location, this charming home provides a wonderful opportunity to enjoy comfortable living in a sought-after setting.



view this property online fox-and-sons.co.uk/Property/BIT112989



welcome to

Campbell Mews Pine Drive, Southampton

- Over 55's Apartment
- Two Bedrooms
- Ground Floor with Private Patio Area
- Spacious Living Room
- Fitted Kitchen & Shower Room

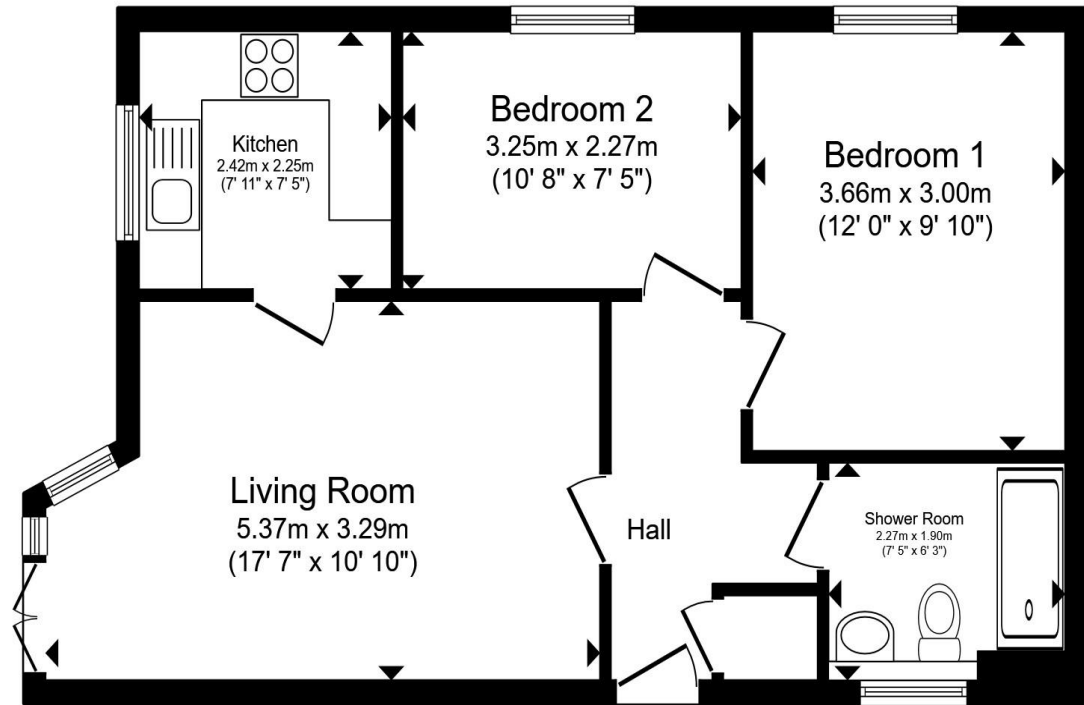
Tenure: Leasehold EPC Rating: D

Council Tax Band: B Service Charge: 2210.20

Ground Rent: 20.00

This is a Leasehold property with details as follows; Term of Lease 125 years from 25 Dec 1987. Should you require further information please contact the branch. Please Note additional fees could be incurred for items such as Leasehold packs.

£170,000



Ground Floor

Total floor area 51.8 m² (557 sq.ft.) approx

This floor plan is for illustrative purposes only. It is not drawn to scale. Any measurements, floor areas (including any total floor area), openings and orientation are approximate. No details are guaranteed, they cannot be relied upon for any purpose and they do not form part of any agreement. No liability is taken for any error, omission or misstatement. A party must rely upon its own inspection(s). Powered by www.propertybox.io



view this property online fox-and-sons.co.uk/Property/BIT112989



Property Ref:
BIT112989 - 0005

1. MONEY LAUNDERING REGULATIONS Intending purchasers will be asked to produce identification documentation at a later stage and we would ask for your co-operation in order that there is no delay in agreeing the sale. 2. These particulars do not constitute part or all of an offer or contract. 3. The measurements indicated are supplied for guidance only and as such must be considered incorrect. Potential buyers are advised to recheck measurements before committing to any expense. 4. We have not tested any apparatus, equipment, fixtures or services and it is in the buyers interest to check the working condition of any appliances. 5. Where an EPC, or a Home Report (Scotland only) is held for this property, it is available for inspection at the branch by appointment. If you require a printed version of a Home Report, you will need to pay a reasonable production charge reflecting printing and other costs. 6. We are not able to offer an opinion either written or verbal on the content of these reports and this must be obtained from your legal representative. 7. Whilst we take care in preparing these reports, a buyer should ensure that his/her legal representative confirms as soon as possible all matters relating to title including the extent and boundaries of the property and other important matters before exchange of contracts.

Fox & Sons is a trading name of Sequence (UK) Limited which is registered in England and Wales under company number 4268443, Registered Office is Cumbria House, 16-20 Hockliffe Street, Leighton Buzzard, Bedfordshire, LU7 1GN. VAT Registration Number is 500 2481 05.



023 8044 6724



Bitterne@fox-and-sons.co.uk



390c Bitterne Road, Bitterne, SOUTHAMPTON,
Hampshire, SO18 5RS



fox-and-sons.co.uk