



ABSOLUTE
PROPERTY

Sopers House, Soper Road, Cuffley EN6 4RY

☎ 020 8882 8156 📠 020 8882 8155

✉ info@absolutepropertyagents.com

🌐 www.absolutepropertyagents.com



**4 Freman Drive, Buntingford
SG9 9TD**

£1,700 Per Month

Absolute Property are delighted to offer this well-presented two double bedroom semi detached house situated in a sought-after residential location in Buntingford.

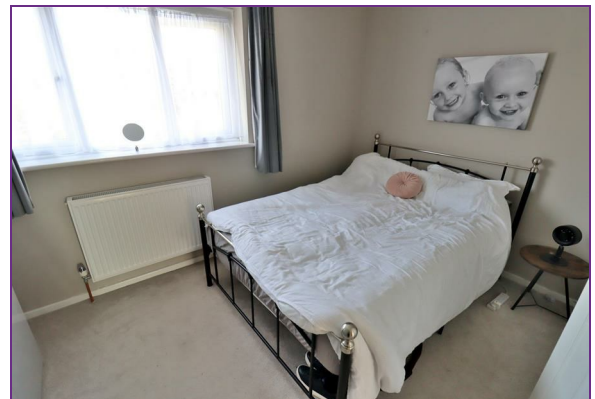
The property offers spacious and well-maintained accommodation throughout, comprising a bright and comfortable living area, fitted kitchen, and two generous double bedrooms. Externally, the property benefits from a private rear garden, garage, and its own driveway providing off-street parking.

Further benefits include gas central heating and double glazing throughout.

Located within easy reach of Buntingford town centre and its range of local amenities, this attractive home offers comfortable living in a convenient and desirable setting.



4 Freman Drive, Buntingford
SG9 9TD



Energy Efficiency Rating		Environmental Impact (CO ₂) Rating	
Current	Potential	Current	Potential
71	71	B	B
72-77	78-83	C	C
73-78	79-84	D	D
74-79	80-85	E	E
75-80	81-86	F	F
76-81	82-87	G	G

For energy efficiency: higher is better
 For environmental impact: lower is better

England & Wales
 EPC Director
 2022/01/01