







530 Chatsworth Road

Brampton • Chesterfield • S40 3BA

Guide Price £699,950 to £725,000

Welcome to this impressive five double-bedroom, three-storey detached home, situated in the highly sought-after area of Brampton. The property is ideally located on the vibrant Chatsworth Road, which offers a variety of well-regarded independent cafés, bars, and restaurants. It is also perfectly positioned for access to local parks, including Somersall Park, with the Peak District just a short drive away. The area is well served by reputable schools and benefits from a short walk into Chesterfield town centre, as well as excellent transport links via major road networks and the nearby train station. This property provides an exceptional family home, with a number of original features, including high ceilings, fireplaces, and an Edwardian tiled floor. Entry is into a spacious and welcoming hallway, offering useful storage. To the left is the living room, a well-proportioned space featuring a bay window and a fireplace. To the right of the hallway is a large kitchen diner with ample space for family dining, also benefitting from a bay window. The kitchen is fitted with shaker-style units and offers space for freestanding appliances, along with additional storage and a pantry. Straight ahead from the hallway is a boot room, which also provides access to the rear garden. A further reception room is located to the left of the hallway and is currently used as a music room. This space opens into a bright garden room, which allows in plenty of natural light and features two sets of bi-folding doors leading out to the rear garden. To the first floor are three double bedrooms and the family bathroom. Bedrooms one and two are positioned at the front of the property. Bedroom one is particularly spacious and benefits from a dressing room area and a fully tiled three-piece ensuite shower room, comprising a shower cubicle, wash basin, and WC. Bedroom two is also a generous double and includes fitted wardrobes. Bedroom three overlooks the rear garden and also benefits from fitted wardrobes. The family bathroom on this floor is fitted with underfloor heating and a modern four-piece suite, including a freestanding bath, walk-in shower, wash basin, and WC. The second floor hosts two further double bedrooms and a shower room. Bedroom four features a skylight overlooking the rear, while bedroom five also overlooks the rear garden. The shower room is fully tiled and fitted with a three-piece suite, including a corner shower cubicle, wash basin, and WC. The property also benefits from having owned Solar Panels which generate an annual income on the property. Externally, the rear garden opens onto a pebbled and patio seating area, ideal for outdoor dining and relaxation. Within this space is an outbuilding, providing excellent versatility, including a shaker-style kitchen with space for freestanding appliances, a reception room, and a shower room with corner shower and WC which makes it ideal for use as a potential annex or home office. The reception room within the outbuilding also has access to a decked area. Beyond the patio, the garden extends into a well-maintained lawn, bordered by mature trees, bushes, and shrubs, creating a private and family-friendly space. There are two off-road parking spaces and a detached brick-built double garage is located to the rear of the property and is accessed via Wash House Lane.



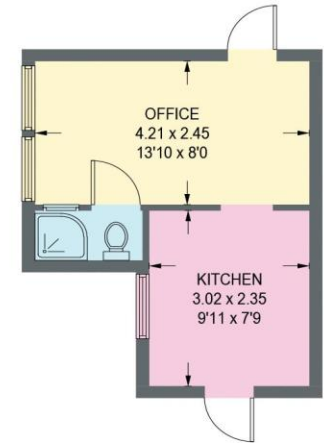
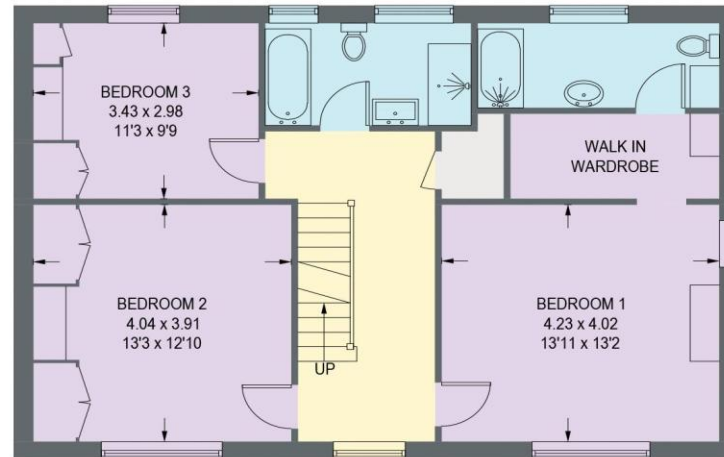
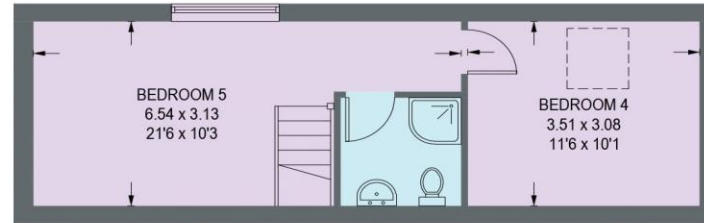
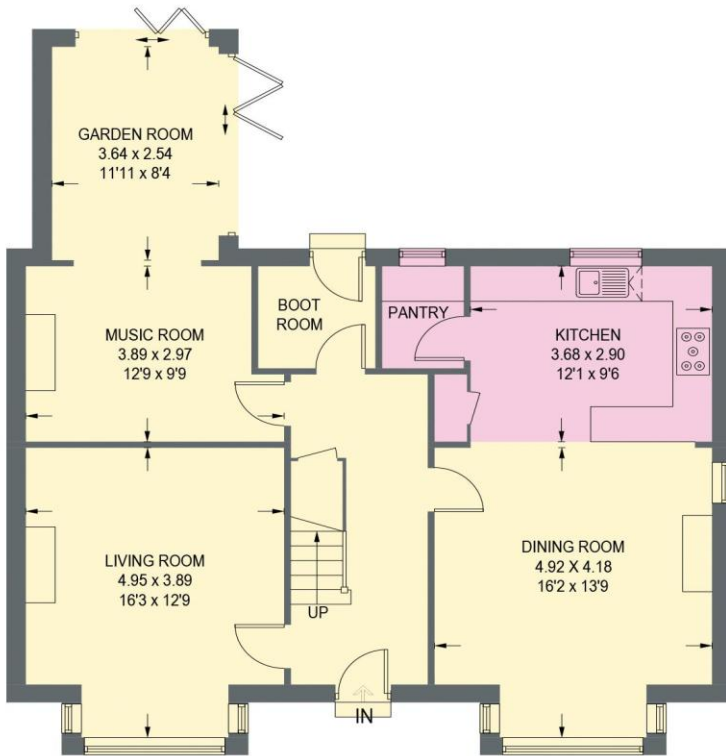


- Impressive Five Double Bedroom Detached House
- Three Storey - Great Family Home
- Bay Window Living & Separate Dining Room
- Kitchen w/ Shaker Style Units & Pantry
- Additional Reception Room & Garden Room
- Five Well Proportioned Double Bedrooms
- Modern Four Piece Suite Family Bathroom
- Generous Enclosed Rear Garden, Patio & Outbuilding
- Detached Double Garage
- Council Tax Band C/EPC Rating D

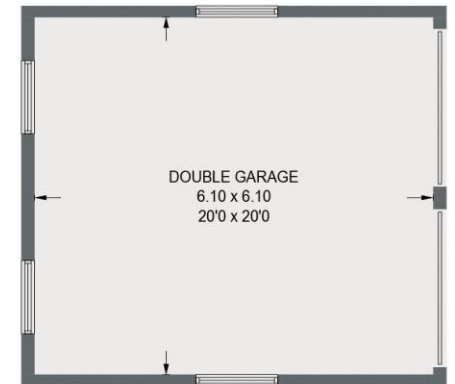


530 CHATSWORTH ROAD

APPROXIMATE GROSS INTERNAL AREA = 250.7 SQ M / 2698.3 SQ FT



(NOT SHOWN IN ACTUAL LOCATION / ORIENTATION)



(NOT SHOWN IN ACTUAL LOCATION / ORIENTATION)

Illustration for identification purposes only, measurements are approximate, not to scale. (ID1307715)

IMPORTANT: we would like to inform prospective purchasers that these sales particulars have been prepared as a general guide only. A detailed survey has not been carried out, nor the services, appliances and fittings tested. Room sizes should not be relied upon for furnishing purposes and are approximate. If floor plans are included, they are for guidance only and illustration purposes only and may not be to scale. If there are any important matters likely to affect your decision to buy, please contact us before viewing the property.



haus

31 West Bars, Chesterfield, S40 1AG
chesterfield@haushomes.co.uk haushomes.co.uk

01246 380 535