



Hoxton Square, Hackney, LONDON, Greater London, N1 6NU

- Warehouse Conversion
- One Double Bedroom
- Wooden Floors Throughout
- Exposed Painted Brickwork
- Car-Free Development
- 900 Square Foot
- Spacious Open Plan Lounge
- High Ceilings
- Unfurnished
- Recently Refurbished

£2,500 Per Month



Hoxton Square, Hackney, LONDON, Greater London, N1 6NU

DESCRIPTION

A stunning ground-floor, one-bedroom warehouse conversion located in the heart of Hoxton Square, offering over 900 sq ft of unique living space.

This exceptional property seamlessly blends industrial charm with modern comforts, featuring exposed brickwork, beautiful wooden flooring, and impressive high ceilings throughout. The expansive open-plan living and dining area creates a welcoming atmosphere, ideal for both relaxing and entertaining.

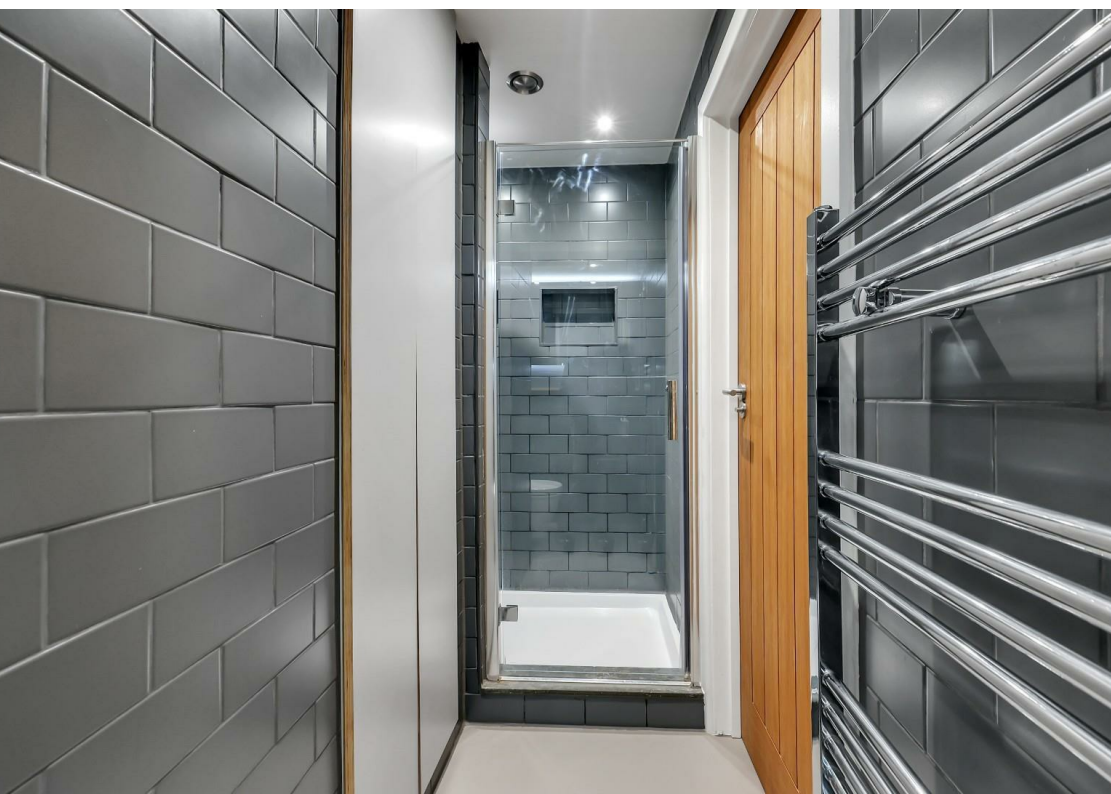
Recently refurbished and freshly redecorated throughout, the property is presented in excellent condition, enhancing its unique warehouse character while providing a stylish and contemporary home.

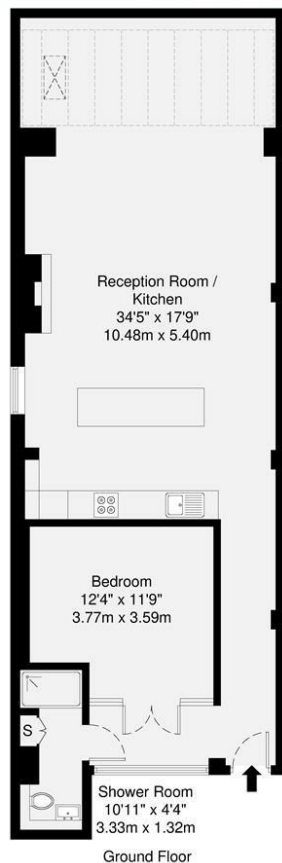
The generously sized bedroom offers ample space for a comfortable retreat, while the distinctive warehouse features add a sense of character rarely found in modern developments.

Perfectly positioned in one of East London's most desirable locations, the property is just moments from Hoxton's vibrant cafés, restaurants, creative hubs, nightlife, and excellent transport connections, including Old Street and Hoxton stations.

A truly special property that combines character, space, and convenience, ideal for professionals seeking a distinctive home in the heart of East London.







GROSS INTERNAL AREA (GIA) The footprint of the property 84 sq m / 904 sq ft	TOTAL STORAGE SPACE Storage and wardrobe total area 0.2 sq m / 2 sq ft	EXTERNAL FEATURES Garden, Balcony, Terrace, Verandah etc. 0.0 sq m / 0.0 sq ft	RESTRICTED HEAD HEIGHT Limited use areas under 1.5m 0.0 sq m / 0.0 sq ft
---	--	--	--

Disclaimer : Floorplan measurements are approximate and are for illustrative purposes only. While we do not doubt the floorplan accuracy and completeness, you or your advisors should conduct a careful, independent investigation of the property in respect of monetary valuation.

Maison
VUE

Viewings

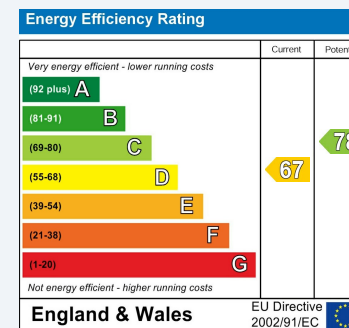
Please contact shoreditch@hunters.com, if you wish to arrange a viewing appointment for this property or require further information.

Valuations

For a valuation of your property, please email the team with your property details, contact information and the times you are available.

ENERGY PERFORMANCE CERTIFICATE

The energy efficiency rating is a measure of the overall efficacy of a home. The higher the rating the more energy efficient the home is and the lower the fuel bills will be.



These particulars are intended to give a fair and reliable description of the property but no responsibility for any inaccuracy or error can be accepted and do not constitute an offer or contract. We have not tested any services or appliances (including central heating if fitted) referred to in these particulars and the purchasers are advised to satisfy themselves as to the working order and condition. If a property is unoccupied at any time there may be reconnection charges for any switched off/disconnected or drained services or appliances - All measurements are approximate.

THINKING OF SELLING? If you are thinking of selling your home or just curious to discover the value of your property, Hunters would be pleased to provide free, no obligation sales and marketing advice. Even if your home is outside the area covered by our local offices we can arrange a Market Appraisal through our national network of Hunters estate agents.