



14 Kensington Drive, Lodge Moor, Sheffield, S10 4NF

Saxton Mee

# 14 Kensington Drive

## Lodge Moor

Guide Price

# £450,000

Guide Price £450,000 to £475,000

Located in the sought-after area of Lodge Moor, this four-bedroom townhouse offers spacious and versatile accommodation arranged over three floors. The property enjoys an excellent position on the western edge of Sheffield, providing easy access to both the city centre and the surrounding Peak District countryside, making it ideal for those seeking a balance between urban convenience and outdoor living.

Lodge Moor is particularly well regarded for its proximity to Sheffield Teaching Hospitals and Sheffield Universities, making it especially attractive to professionals working in healthcare and academia.

The ground floor comprises an entrance hall, WC, laundry room and integral garage. There is also a useful additional room currently set up as an office for home working and which could easily be used as a fourth bedroom or guest room if required.

On the first floor, there is a generous living and dining room running the full width of the property, providing a bright and comfortable space with ample room for both seating and dining. The separate kitchen is well laid out with a good range of fitted units and worktop space.

The second floor includes three bedrooms, with the main bedroom benefiting from fitted wardrobes and an en-suite shower room. The remaining bedrooms, also benefiting from fitted wardrobes, are served by a family bathroom, making the layout well suited to family living.

Externally, the property has a delightful beautifully maintained rear garden, ideal for sitting out or entertaining. To the front, there is a driveway providing off-road parking for two cars, along with access to the integral garage.

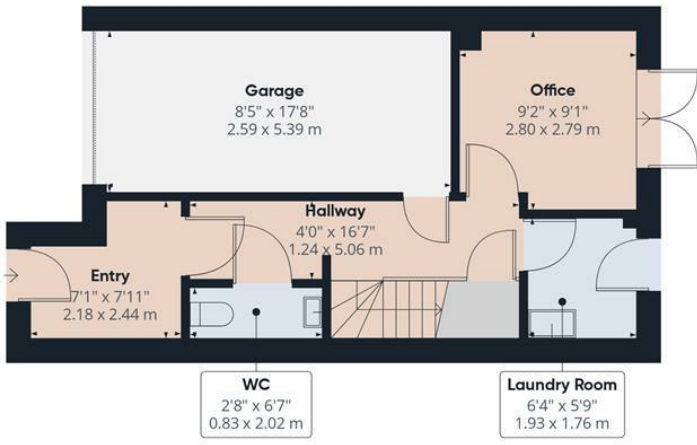
Overall, a well-proportioned home in a popular location, offering flexible living space and practical features throughout. Early viewings are highly recommended to avoid missing out.



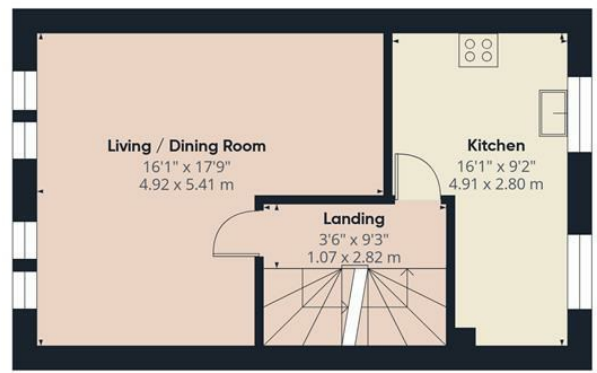
- Stunning four-bedroom townhouse in sought-after Lodge Moor
- Excellent location close to transport links, green spaces, and countryside
- Close to Sheffield Teaching Hospitals and Sheffield Universities
- Bright and spacious living and dining room
- Separate fitted kitchen with plenty of storage and worktop space
- Ground floor includes hall, WC, laundry room, integral garage, and flexible office/bedroom
- Three well-proportioned bedrooms all with fitted wardrobes including stunning main bedroom with en-suite shower room
- Family bathroom
- Lovely rear garden, driveway with parking for two cars and garage access
- Call Saxton Mee Banner Cross to arrange your viewing



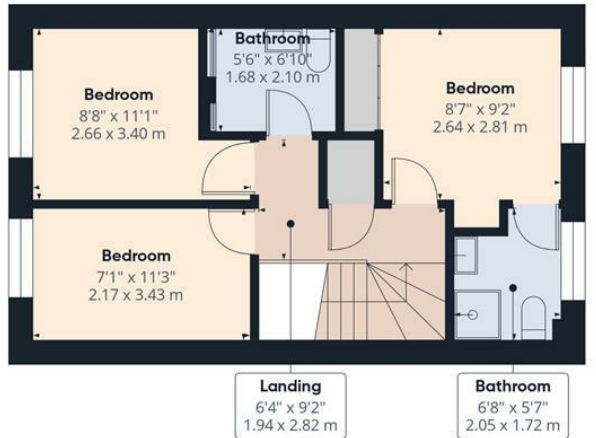




Ground Floor



Floor 1



Floor 2

Approximate total area<sup>m</sup>  
1216 ft<sup>2</sup>  
112.8 m<sup>2</sup>

(1) Excluding balconies and terraces

Calculations reference the RICS IPMS 3C standard. Measurements are approximate and not to scale. This floor plan is intended for illustration only.

GIRAFFE360

While we endeavour to make our sales particulars fair, accurate and reliable, they are only a general guide to the property and, accordingly, if there is any point, which is of particular importance to you, please contact the relevant office. The Agents have not tested any apparatus, equipment, fittings or services and so cannot verify they are in working order. The buyer is advised to obtain verification. Please note all the measurement details are approximate and should not be relied upon as exact. All plans, floor plans and maps are for guidance purposes only and are not to scale. Under no circumstances should they be relied upon as exact or for use in planning carpets and other such fixtures, fittings or furnishings. YOUR HOME IS AT RISK IF YOU DO NOT KEEP UP REPAYMENTS ON A MORTGAGE OR OTHER LOAN SECURED ON IT. 'A Life Assurance policy may be requested.' 'Written Quotations of credit terms available on request.'

Banner Cross  
T: 0114 268 3241  
E: [bannercross@saxtonmee.co.uk](mailto:bannercross@saxtonmee.co.uk)  
[www.saxtonmee.co.uk](http://www.saxtonmee.co.uk)

Hathersage  
T: 01433 650009  
E: [hathersage@saxtonmee.co.uk](mailto:hathersage@saxtonmee.co.uk)

Bakewell  
T: 01629 815307  
E: [bakewell@saxtonmee.co.uk](mailto:bakewell@saxtonmee.co.uk)

Matlock  
T: 01629 828250  
E: [matlock@saxtonmee.co.uk](mailto:matlock@saxtonmee.co.uk)

