

## Regent Place Wimbledon, SW19 8RP

£600,000 Freehold



A well presented three bedroom Link Detached modern freehold house with off-street parking, garage and a private garden, offered to the market with no onward chain and enviably located in a sought after private development in Wimbledon, SW19.

Boasting a spacious reception, separate kitchen and ground floor W/C, with doors opening out onto a sunny garden with side access. Three bedrooms (one with built-in wardrobes) and a family bathroom comprise the first floor, with copious storage in the loft.

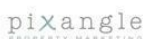
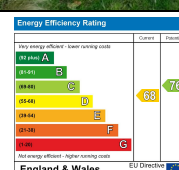
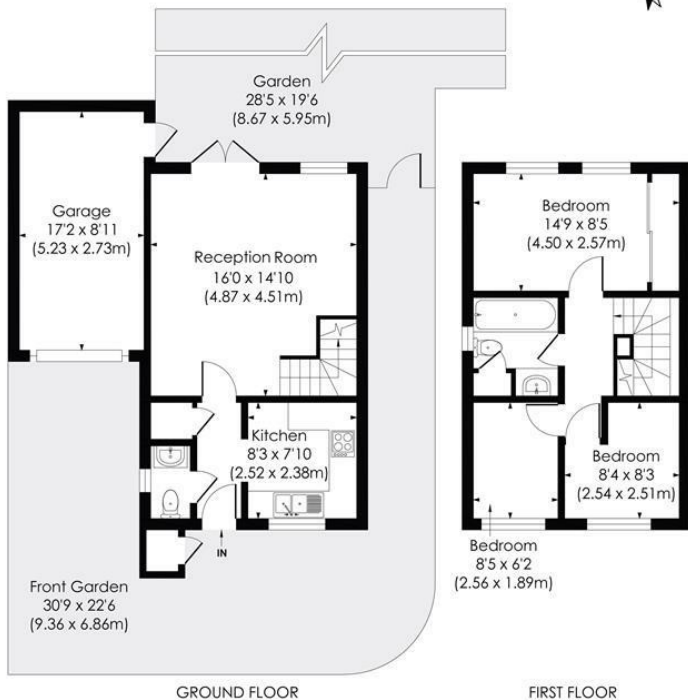
Positioned in the sought after 'Poets' area of SW19, on the doorstep of Haydons Road Thameslink and close to both Wimbledon Mainline and Northern Line tube, with Wimbledon Town Centre a short walk away. This is a fantastic freehold house and a superb purchase for a first time buyer.

**REGENT PLACE, SW19**

Approx. Gross Internal Floor Area

**890 Sq. ft/82.68 Sq. m (Incl. Garage)**

**736 Sq. ft/68.40 Sq. m (Excl. Garage)**



This floor plan has been prepared for the purpose of illustration only in accordance with the latest RICS code of measuring practice and is not to scale. All measurements and areas are approximate and whilst every effort has been made to ensure the accuracy of the plan contained here, no responsibility is taken for any error, omission or misstatement.

© Pixangle Property Marketing Ltd. info@pixangle.com Tel: 0208 870 2118

- Link Detached Freehold House
- Three Bedrooms
- Off-Street Parking
- Garage
- Located in a Private Development in Wimbledon
- Close Proximity to Multiple Transport Links
- No Onward Chain
- Freehold (Annual Costs for Maintenance of Regent Place - £230)
- EPC Rating - D
- Merton Council Tax Band - E

**For Free Mortgage Quote and Best Mortgage Rates, call an Ellisons Mortgage Advisor on 020 8944 9494**



Although these particulars are believed to be correct, their accuracy is not guaranteed and they do not form part of any contract.

**Celebrating 30 years of successful Sales and Lettings in Merton**

