



Trinity Rise, SW2

£2,700 Per calendar month

A spacious three bedroom house in the heart of Brixton, set over two floors and comes with two double bedrooms, a smaller double bedroom or home office, a generous double reception room, separate kitchen and a conservatory which leads out to a large private garden.

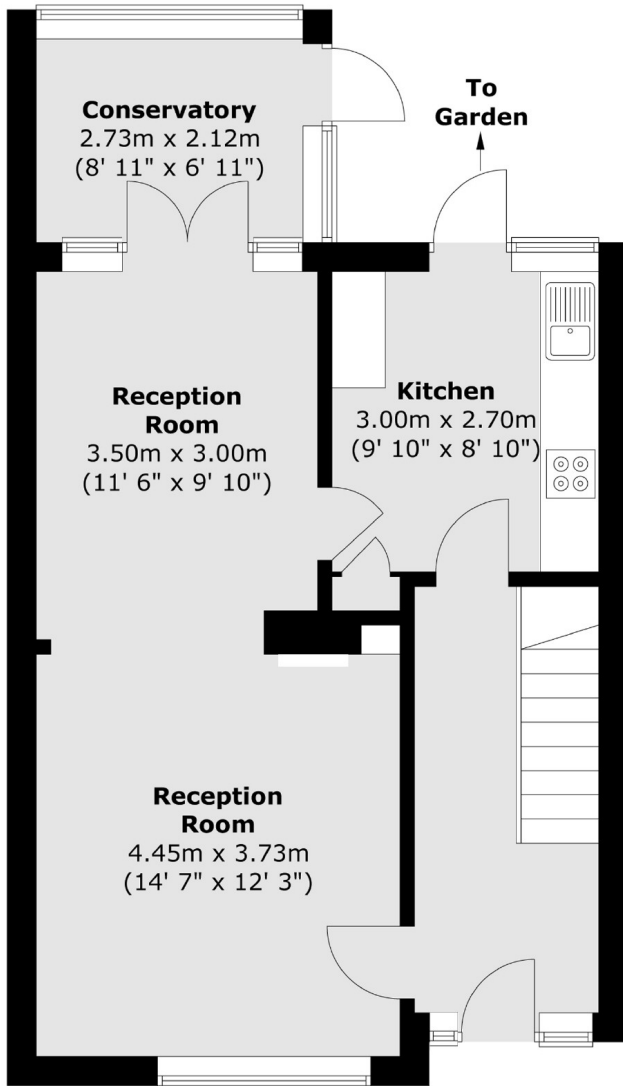
A residential street which runs parallel to Brockwell Park, moments from the shops in Herne Hill, the green open spaces of Brockwell Park and Brixton Town Centre.

Features

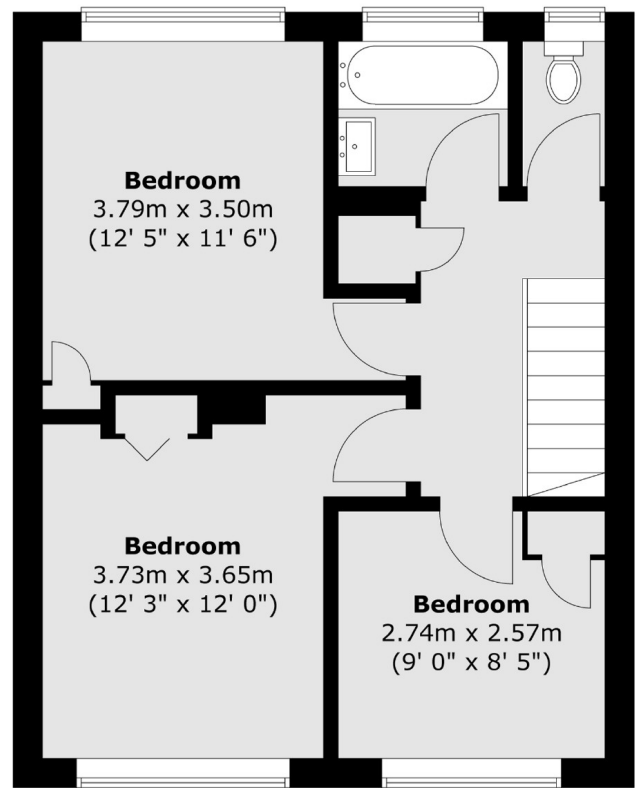
- Three Bedrooms
- Double Reception Room
- Full House
- Conservatory
- Private Garden
- Close to Brockwell Park

Trinity Rise, London, SW2

Ground Floor



First Floor



Total area (approx.) : 96.1 sq. m (1034 sq. ft)