



Lincoln Court

14a Rickard Close, NW4

£1,550 per month
(£357.69 per week)

Large ground floor apartment set in a quiet development in Hendon. The property has a large bedroom with deep built in storage and an ensuite bathroom, open plan reception room and kitchen and a separate guest WC. The flat also comes with an off street parking space. Located close to amenities of Hendon.

CHESTERTONS



Lincoln Court

14a Rickard Close, NW4

- Large One Bedroom
- One Off Street Parking Space
- Part Furnished
- Ground Floor
- Open Plan Reception Room & Kitchen



Deposit Required: £1,788.46
Local Authority: London Borough of Barnet
Council Tax Band: D
EPC Rating: C
Part Furnished

Score	Energy rating	Current	Potential
92+	A		
81-91	B		
69-80	C	71c	77c
55-68	D		
39-54	E		
21-38	F		
1-20	G		

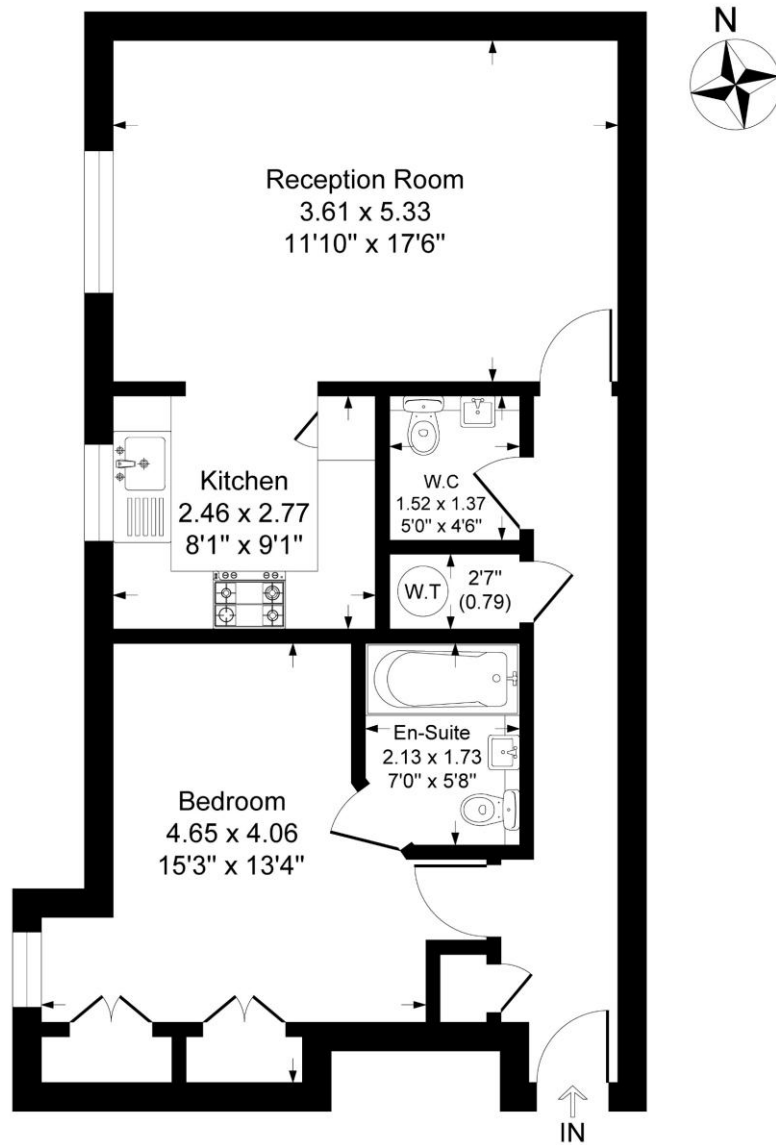
Chestertons Hampstead Lettings

55-56 Hampstead High Street
Hampstead
London
NW3 1QH
hampsteadlettingsusers@chestertons.co.uk
02077941125
chestertons.co.uk

Additional tenant charges apply (fees apply to non-AST tenancies only)
Tenancy Agreement Fee: £300
References per Tenant/Guarantor: £60
Inventory check (approx. £100 – £250 inc. VAT)
[chestertons.co.uk/property-to-rent/applicable-fees](https://www.chestertons.co.uk/property-to-rent/applicable-fees)

Lincoln Court 14a Rickard Close, NW4

Approximate Gross Internal Floor Area = 58.5 sq m / 631 sq ft



Ground Floor

Illustration for identification purposes only, measurements are approximate, not to scale.

