



Harvist Road, NW6

£3,250 Per calendar month

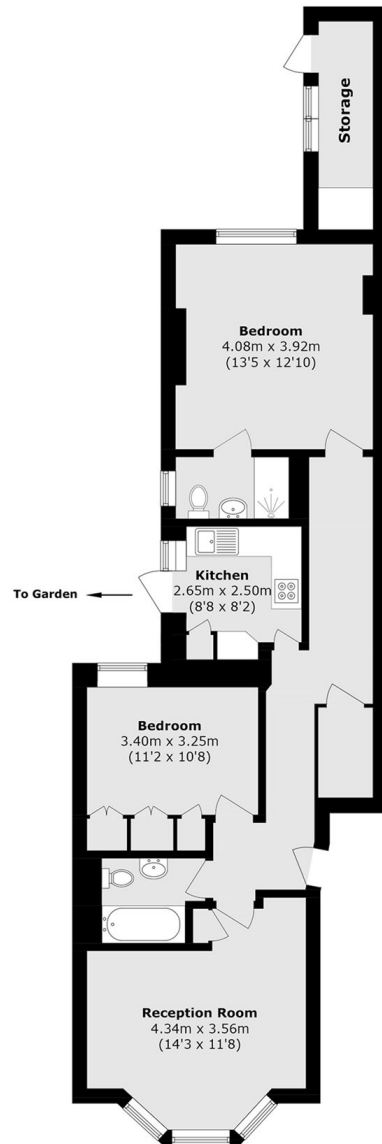
A modern two-bedroom, two bathroom ground floor garden flat, perfect of professional sharers or couples. The property benefits from a modern separate kitchen reception leading onto a private garden. The property benefits from wooden flooring throughout.

Harvist Road is located within walking distance of Queens Park, Kensal Rise and Kensal Green Station and Salusbury Road for multiple transport links, amenities, M&S Simply Food and the Sunday Farmers' Market.

Features

- Two double bedrooms
- Two Bathrooms
- Private Garden
- Wooden Floor
- Large windows
- Modern

Harvist Road, LONDON, NW6



Lower Ground Floor

Total Area (approx.): 74.1 sq. m (797.6 sq. ft)

External storage area (approx.): 4.4 sq. m (47.3 sq. ft)