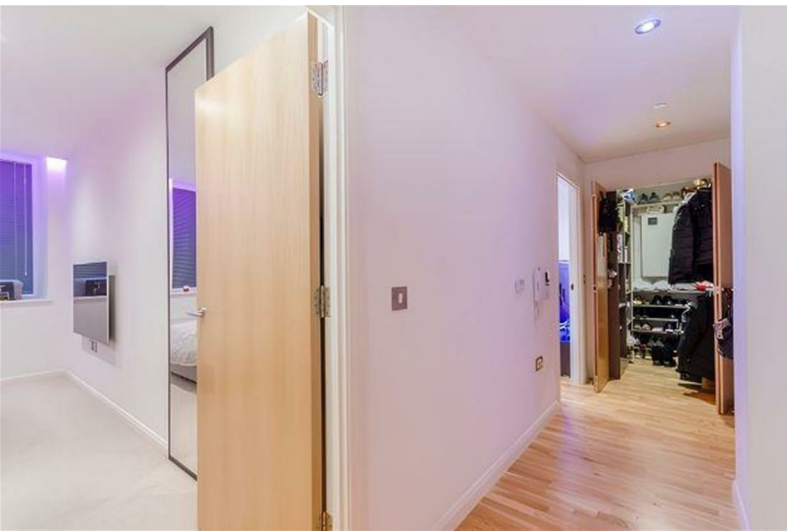




Emerald House, Croydon, CR0 2NZ

£1,600 PCM



Emerald House, Croydon, CR0 2NZ

£1,600 PCM



This property boasts a contemporary open-plan kitchen/reception room, a double bedroom with floor to ceiling fitted wardrobes, a king sized ottoman bed, and Philips Hue mood lighting in both the living room and bedroom. It includes numerous luxury electronics and appliances throughout, including two 55" televisions (a wall mounted Samsung in the bedroom and a freestanding Hisense in the reception / living room).

The accommodation offers significantly more storage than is typical for one bedroom flats within Emerald House, with full height fitted wardrobes, a king sized ottoman bed with under bed capacity, and a custom built shoe cupboard/cloakroom contributing to a highly practical and well organised living space.

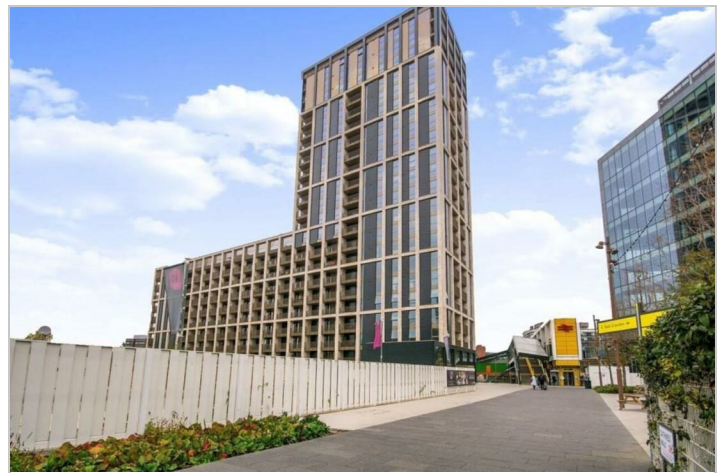
Residents benefit from lift access to all floors, secure bicycle storage, and the added convenience of on-site concierge services. Positioned just moments from East Croydon Station, the property offers fast and easy connections to Central London, while Boxpark and the town centre's mix of shops, bars, and restaurants are right on your doorstep.

Situated just 0.3 miles from East Croydon station, offering fast rail connections to London Victoria and London Bridge in under 20 minutes.

Please note that dogs are not permitted under the building regulations.

Council Tax Band: D (London Borough of Croydon)

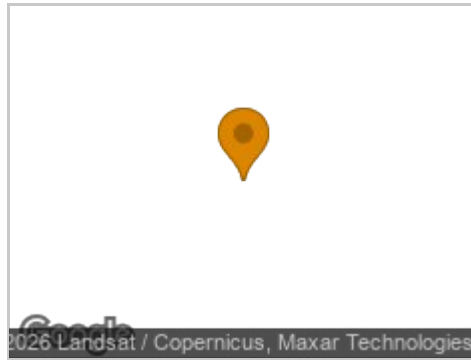
Holding Deposit: £369



Road Map



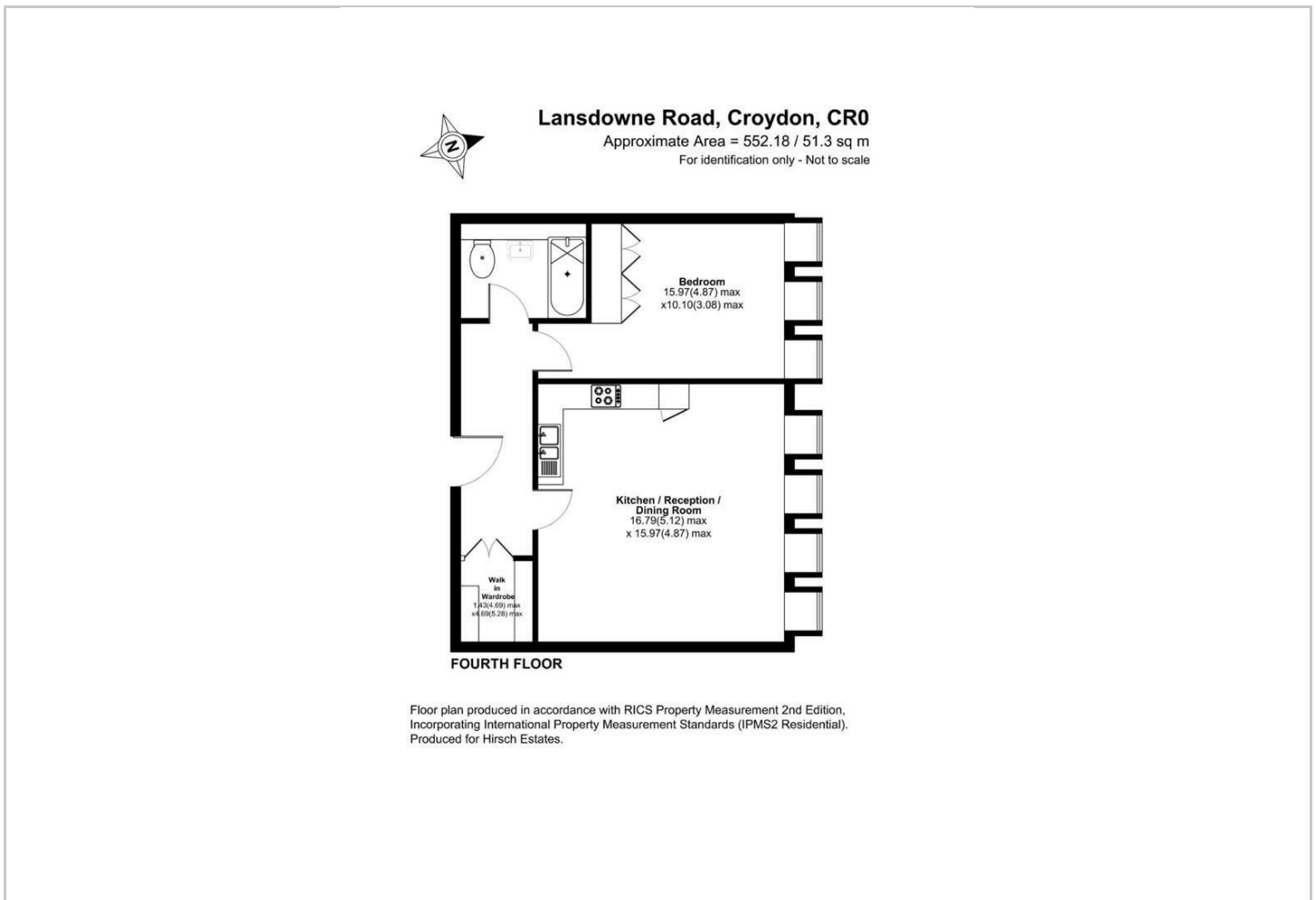
Hybrid Map



Terrain Map



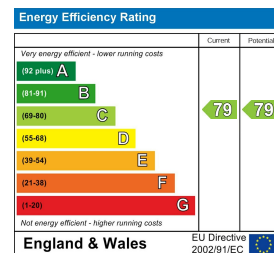
Floor Plan



Viewing

Please contact our Hirsch Estates Office on 020 3002 0587 if you wish to arrange a viewing appointment for this property or require further information.

Energy Efficiency Graph



These particulars, whilst believed to be accurate are set out as a general outline only for guidance and do not constitute any part of an offer or contract. Intending purchasers should not rely on them as statements of representation of fact, but must satisfy themselves by inspection or otherwise as to their accuracy. No person in this firm's employment has the authority to make or give any representation or warranty in respect of the property.