

Bloemfontein Road, W12

£576 Per week

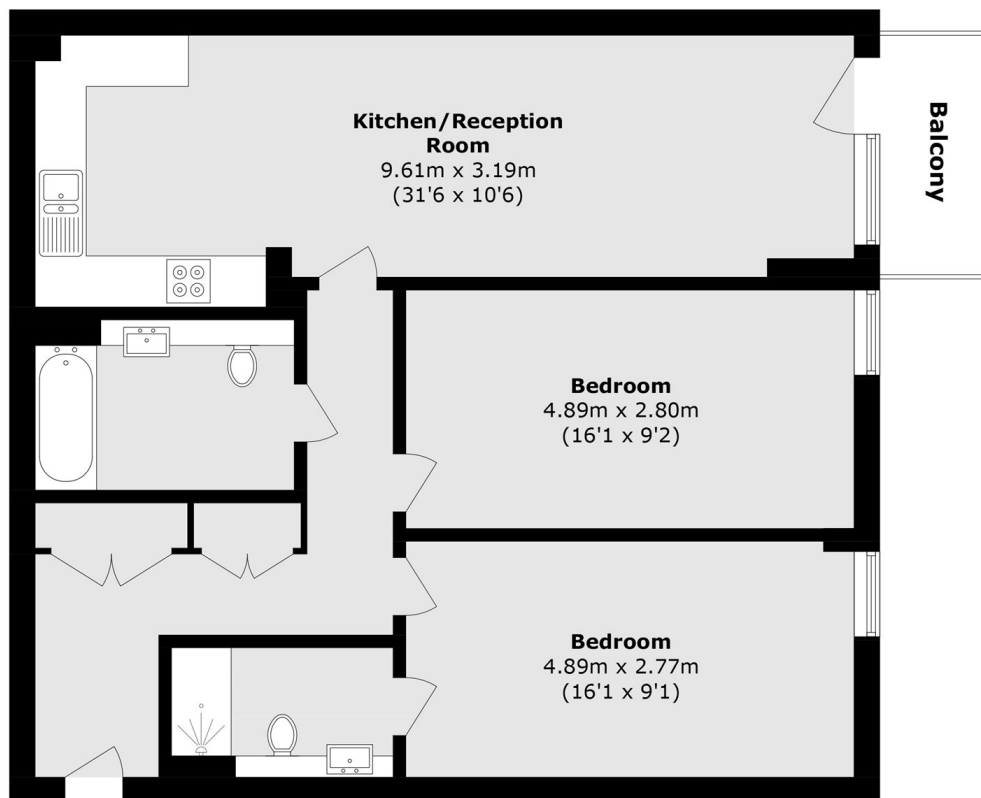
Located on the third floor of this popular development is this large two double bedroom, two bathroom flat. It offers a bright and spacious lounge leading onto a large private balcony.

Cranston Court is located on Bloemfontein Road, only a short distance from White City and Wood Lane tube stations. The property is located within half a mile of the amenities of Westfield.

Features

- Two Bedroom
- Two Bathroom
- Large Private Balcony
- Lift
- Third floor
- Excellent Condition

Bloemfontein Road,
London, W12



Total area (approx.): 82.3 sq. m (885.8 sq. ft)
Balcony area (approx.): 3.6 sq. m (38.7 sq. ft)