



Our View "Ideal for first time purchase"

A well presented and spacious one bedroom maisonette featuring Living room, separate dining room and superb fitted Kitchen/breakfast room also off-road parking located in the heart of Newton Abbot

The accommodation begins with the superb modern fitted kitchen/breakfast room with a matching range of wall and base level units, stainless steel mixer tap sink and drainer, built-in oven with gas hob and extraction hood / light above, space for washing machine, wood effect flooring, inset spotlights, storage cupboard housing meters and door providing access to the dining room which features additional storage space and plumbing tumble dryer and space for Fridge and freezer, continued wood effect flooring, from the kitchen / breakfast room stairs rise to the first floor landing where you have access to the modern fitted shower room comprising a

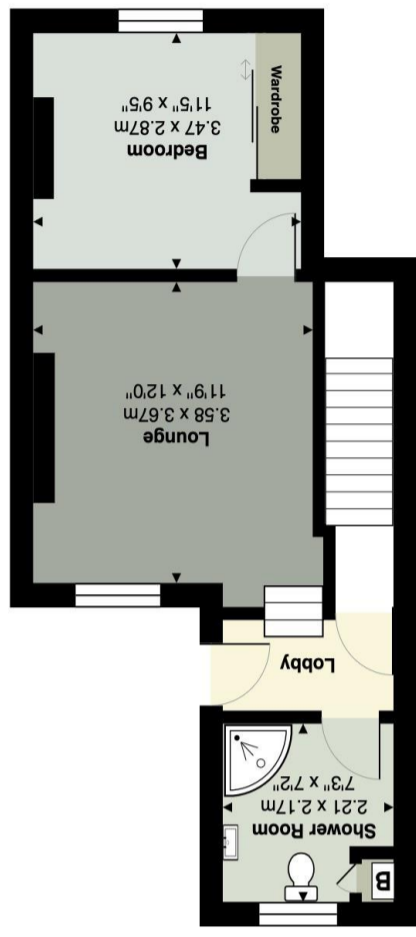
low-level flush WC, pedestal wash hand basin with storage beneath and separate shower fed from mains, inset spotlights, extractor fan and obscured double glazed window to the front, cupboard housing combination boiler, wood effect flooring, from the landing space door provides access to the front courtyard and a few stairs rise to the delightful living room where you have double glazed window to the front, Fireplace with exposed brick surround and door leading into the double bedroom where you have double glaze window to the rear. Externally the property features one parking space at front with gated access to an enclosed courtyard with a few steps lowering to main entrance

- Well presented property
- Spacious living room
- Separate dining room
- Modern fitted kitchen / breakfast room
- Modern shower room
- Double bedroom
- Courtyard garden
- Off road parking
- Town centre location





Approx Floor Area: 36.2 m² ... 390 ft²



Approx Floor Area: 25.2 m² ... 271 ft²

