



Armitage Road, SE10

£600 Per week

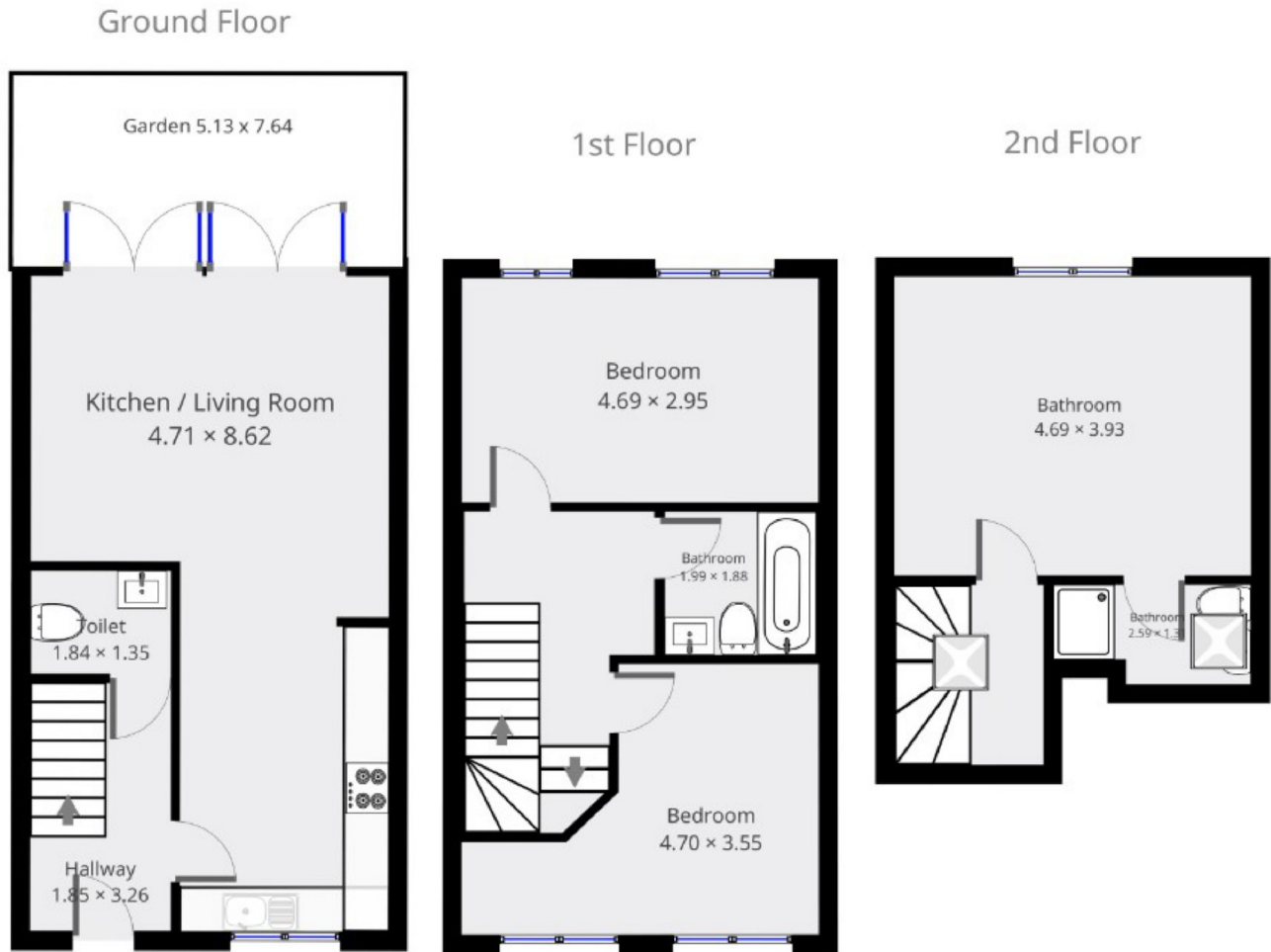
Three bedroom terraced house with private garden ideal for sharers or growing family. Features semi open plan living space with hardwood flooring throughout, large modern kitchen, upstairs you'll find three double bedrooms, main with en-suite.

Located within close proximity to great Transport links, Maze Hill mainline station is 0.6 miles, North Greenwich for the Jubilee Line is 1.3 miles and the DLR at Cutty Sark 1.1 miles away. Local places of interest consist of Greenwich Park, Greenwich Market and the O2 where you will find plenty of places for food, drinks and the shopping outlet.

Features

- Terraced House
- Semi Open Plan Living
- Modern Kitchen
- Private Garden
- Three Double Bedrooms
- Main with En-Suite

Armitage Road, London, SE10



THIS FLOORPLAN IS PROVIDED WITHOUT WARRANTY OF ANY KIND. SENSOPIA DISCLAIMS ANY WARRANTY INCLUDING, WITHOUT LIMITATION, SATISFACTORY QUALITY OR ACCURACY OF DIMENSIONS.

