



[www.jeffreygross.co.uk](http://www.jeffreygross.co.uk)

CARDIFF

VALE

CAERPHILLY

BRISTOL

*Wyndham Crescent*

PONTCANNA



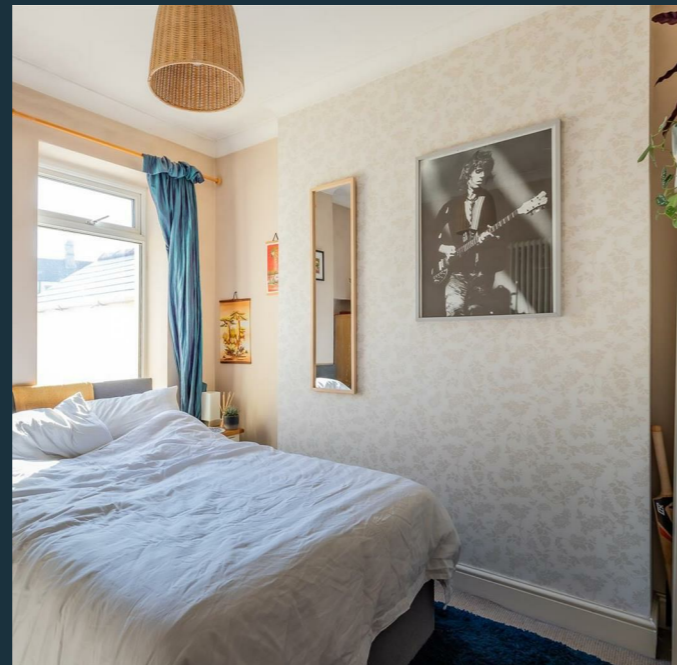
*Traditional terraced house on a wonderful street, between Pontcanna & Canton.*

Comments by Mrs Ruby Ledley



**Property Specialist**  
**Mrs Ruby Ledley**  
 Valuer

[ruby@jeffreycross.co.uk](mailto:ruby@jeffreycross.co.uk)



Comments by the Homeowner



Wyndham Crescent, Cardiff CF11 9EH

Total Area: 926 ft<sup>2</sup> ... 86.0 m<sup>2</sup>

All measurements are approximate and for display purposes only



Energy Efficiency Rating		Current	Potential
Very energy efficient - lower running costs			
(92 plus)	A		82
(81-91)	B		
(69-80)	C		
(55-68)	D	56	
(39-54)	E		
(21-38)	F		
(1-20)	G		
Not energy efficient - higher running costs			
England & Wales		EU Directive 2002/91/EC	



# Wyndham Crescent

Pontcanna, Cardiff, CF11 9EH

Guide Price

£330,000



2 Bedroom(s)



1 Bathroom(s)



926.00 sq ft



Contact our  
**Pontcanna Branch**

02920 499680

Located in the charming area of Wyndham Crescent in Pontcanna, Cardiff, this delightful terraced house offers a perfect blend of comfort and convenience. Spanning 882 square feet, the property features two spacious double bedrooms, making it an ideal choice for couples, small families, or those seeking more space.

You are welcomed by two inviting reception rooms that provide ample space. The layout is both practical and appealing, allowing for a seamless flow throughout the home. The overall design promotes a sense of warmth and homeliness.

One of the standout features of this property is the low-maintenance south-facing garden, which offers a lovely outdoor space to enjoy the sunshine. This garden is perfect for those who appreciate outdoor living without the burden of extensive upkeep. Additionally, a shed in the garden presents an excellent opportunity for a home office, providing a quiet and productive space away from the main living areas.

Being chain-free, this property allows for a smooth and straightforward purchasing process, making it an attractive option for prospective buyers. With its prime location in the sought-after Pontcanna area, you will find yourself surrounded by a vibrant community, with local amenities, parks, and excellent transport links just a stone's throw away.

In summary, this terraced house on Wyndham Crescent is a wonderful opportunity for anyone looking to settle in a desirable part of Cardiff. With its generous living space, charming garden, and potential for a home office.



Hallway

Living Room 11'5" x 11'2" (3.49m x 3.41m )

Dining Room 14'6" x 12'4" (4.43m x 3.76m )

Kitchen 19'0" x 6'10" narrowing to 5'8" (5.8m x 2.09m narrowing to 1.74m)

Cloakroom WC 5'8" x 2'4" (1.73m x 0.72m)

To the First Floor

Landing 12'0" x 4'10" (3.66m x 1.47m)

Bedroom One 11'3" x 14'6" (3.45m x 4.43m )

Bedroom Two 12'0" into recess x 9'3" (3.66m into recess x 2.82m )

Family Bathroom 10'2" x 6'10" (3.11m x 2.09m)

Garden

Garden paved with Indian Sandstone with wall and fence boundary.

Outbuilding

Loglap shed with power, lighting, is insulated and has a damp proof course. Could be used as a home office or for additional storage.

Tenure

We are advised by the owner that the property is Freehold, this is to be comforted by your legal advisor.

Council Tax

Band E

Additional information

Offered to the market with no onward chain



CARDIFF

VALE

CAERPHILLY

BRISTOL

[www.jeffreygross.co.uk](http://www.jeffreygross.co.uk)