



42 Roman Bank, Stamford

Stamford



Key features

- Well Presented & Extended 4 Bedroom Detached Family Home
- Formal Living Room with Wood Burning Stove
- Stunning Updated Kitchen with Premium Appliances
- Large Open Plan Entertaining with Bi-fold Doors Opening to the Garden
- Downstairs Shower Room, Utility and Laundry Room
- Master Bedroom with Ensuite & Dressing Room
- Beautifully Landscaped Garden with Alfresco Dining
- Off Road Parking for 3/4 Cars

Situated on one of Stamford's most sought-after streets, this beautifully presented and thoughtfully extended four-bedroom detached family home offers a welcoming blend of character and contemporary style. Step through the generous entrance hall and you're greeted by a sense of space that sets the tone throughout the house. The formal living room is a cosy retreat, complete with a wood burning stove for those cooler evenings, while the heart of the home is undoubtedly the stunning, updated kitchen. Fitted with premium appliances and finished to an exceptional standard, it seamlessly flows into a spacious open-plan living and dining area, ideal for entertaining. Bi-fold doors stretch across the rear.







Upstairs, the master suite is a true sanctuary, boasting a vaulted ceiling that enhances the feeling of space, a dressing area, and a luxurious ensuite. Slide open the Juliet balcony doors to enjoy tranquil views over the garden and an abundance of natural light. The second bedroom also benefits from its own ensuite, while two further double bedrooms share a stylish family bathroom, making this home ideal for growing families or guests. With off-road parking for three to four cars, this property combines practicality with elegance.

The outside space is just as impressive as the interior, with a beautifully landscaped garden designed for both relaxation and entertaining. Mature planting, well-tended lawns, and thoughtfully placed seating areas create a private oasis where you can unwind or host alfresco dinners with friends and family. The bi-fold doors from the open-plan living area open directly onto a spacious patio, making indoor-outdoor living a breeze during the warmer months. There's ample room for children to play or for keen gardeners to indulge their passion. With off-road parking for several vehicles and the added benefit of a peaceful, established neighbourhood, this home offers all the space you need to enjoy the best of Stamford living, both inside and out.



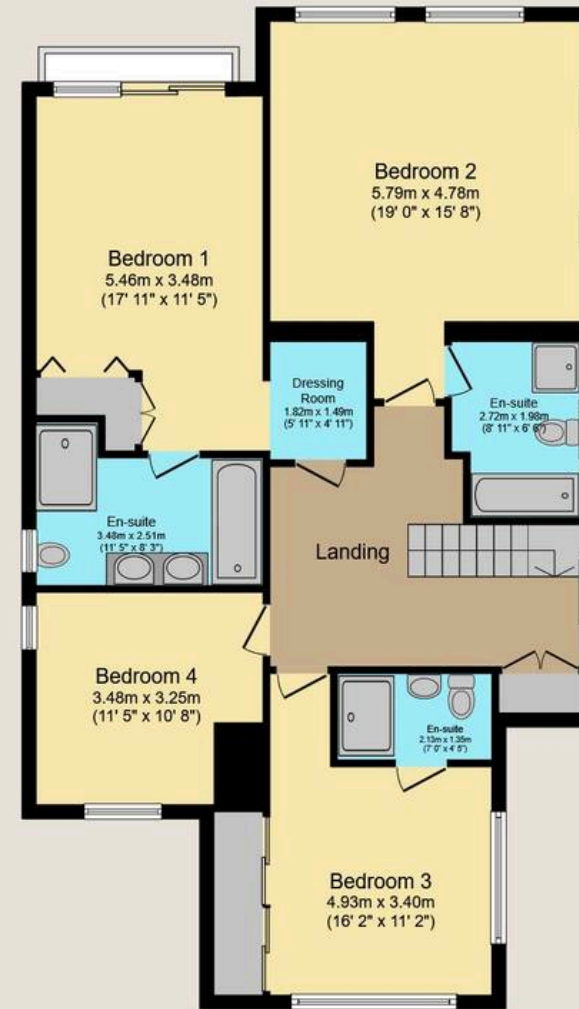


42 Roman Bank, Stamford, PE9 2ST



Ground Floor

Floor area 114.5 sq.m. (1,233 sq.ft.)



First Floor

Floor area 106.5 sq.m. (1,146 sq.ft.)

Total floor area: 230.9 sq.m. (2,486 sq.ft.)

This floor plan is for illustrative purposes only. It is not drawn to scale. Any measurements, floor areas (including any total floor area), openings and orientations are approximate. No details are guaranteed, they cannot be relied upon for any purpose and do not form any part of any agreement. No liability is taken for any error, omission or misstatement. A party must rely upon its own inspection(s). Powered by www.Propertybox.io

