



Lymington Road, NW6

£496 Per week

Located in the heart of West Hampstead is this one double bedroom apartment, set on the first floor of this well maintained Period conversion which overlooks the communal garden.

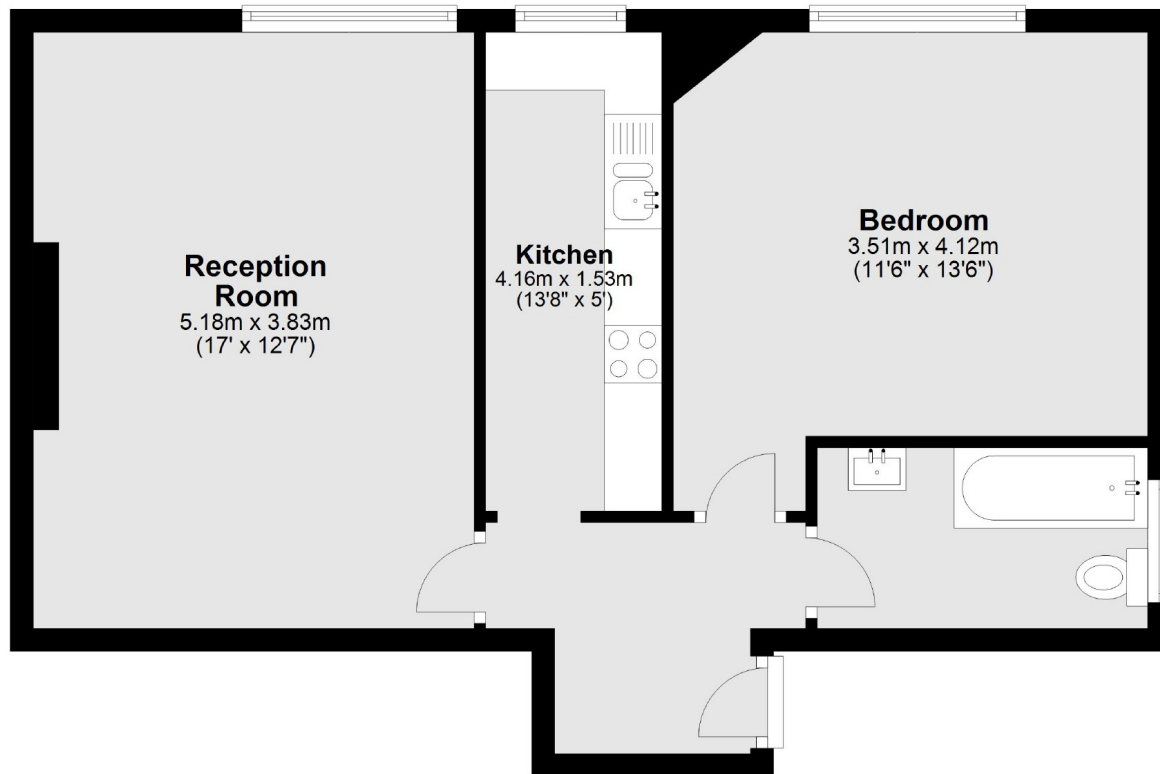
Lymington Road is a highly sought after quiet residential street which is conveniently located with easy access to the shops, bars and restaurants of West End Lane with multiple transport links including West Hampstead (Jubilee Line) Thamelink and West Hampstead Overground.

Features

- One Bedroom Apartment
- Large Reception
- Tiled Bathroom
- Communal Garden
- Period Conversion
- West Hampstead Tube

Lymington Road,
London, NW6

First Floor



Total area: approx. 52.0 sq. metres (559.7 sq. feet)