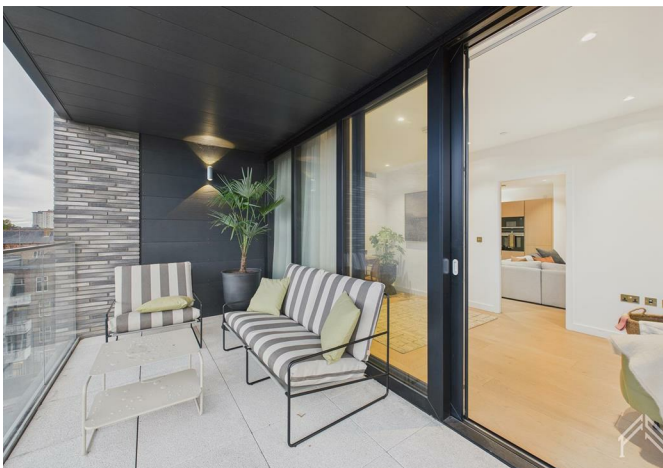
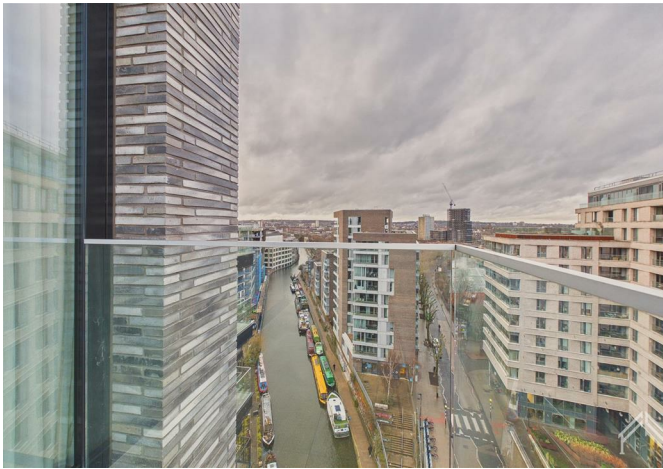


£1000
CASHBACK
WHEN YOU MOVE IN

6543345 101 Camley Street, London, N1C 4DU
£5,300 Per month





6543345 101 Camley Street, London, N1C 4DU

£5,300 Per month

Limited offer- up to £4,000 voucher | 900 sq ft | Large Balcony | 24/7 Concierge & Gym | Furnished or Unfurnished.

This spacious 2-bedroom apartment in Zone 1 offers 900 sq ft of thoughtfully designed living space, featuring underfloor heating, two private balconies, and optional interior-designed furnishings with king-size beds, Siemens appliances, and full smart-home integration.

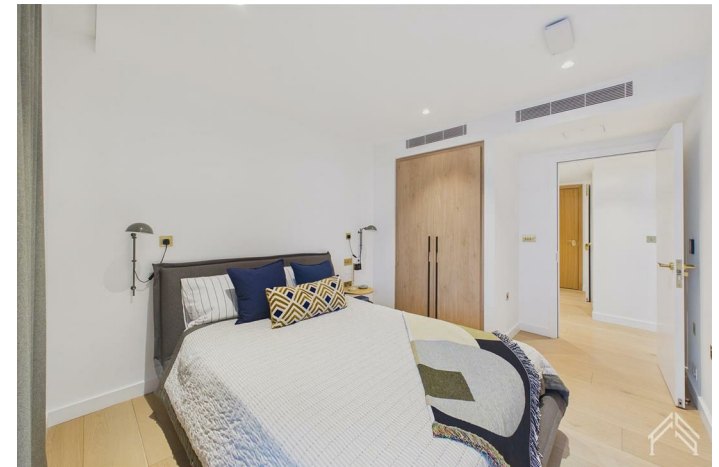
Residents benefit from ultra-fast Wi-Fi, a stunning penthouse sky lounge, 360° rooftop terrace, private dining room, co-working and conference spaces, and a state-of-the-art gym. Additional amenities include a pet wash station, hotel-style lobby, secure bike storage, electronic parcel room, and a dedicated 24/7 on-site management team.

Book this 2-bedroom apartment and receive a £4,000 Prezzee voucher – a flexible gift card you can use at hundreds of popular retailers, from fashion and tech to dining, travel, and entertainment. See terms & conditions for more information.

Description



Situation

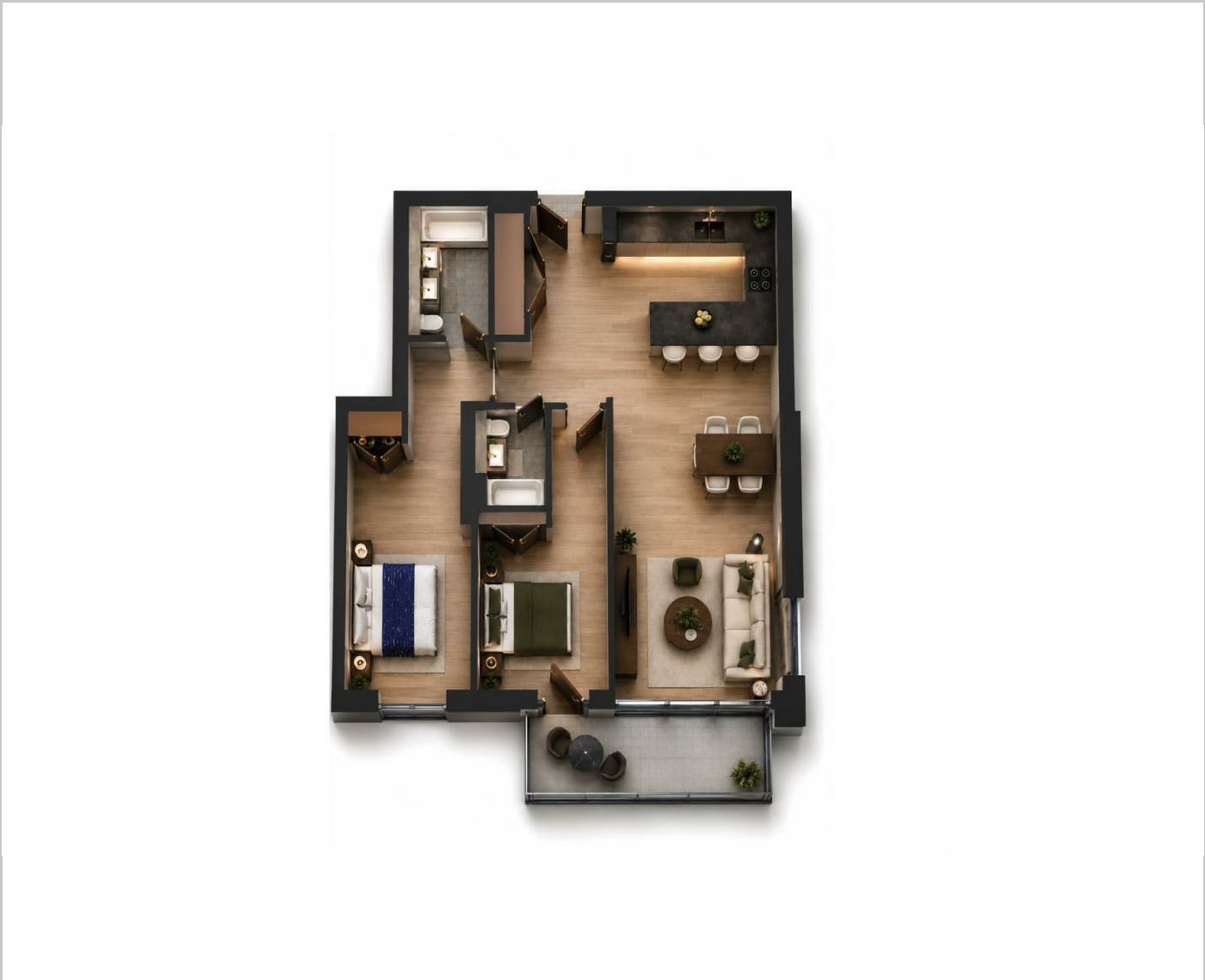


Furnished/unfurnished

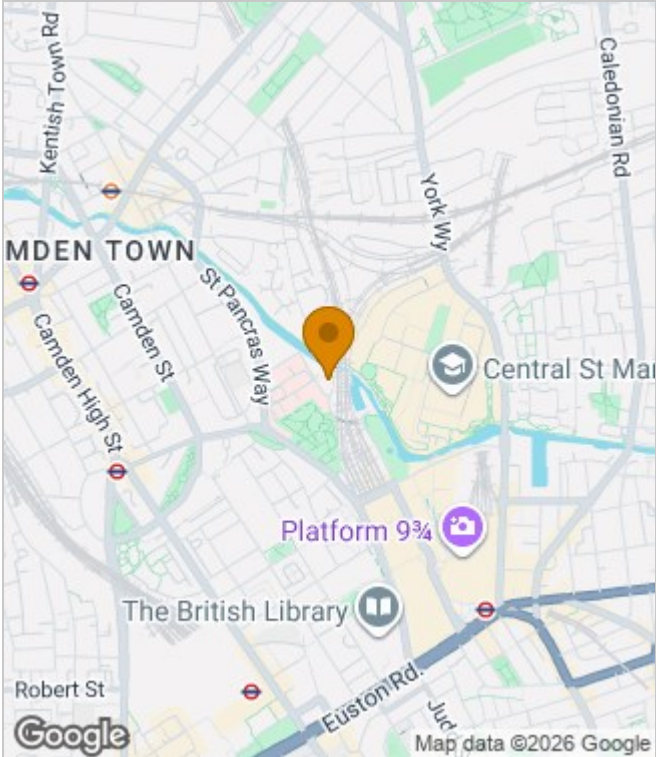
Council Tax Band: B

Available:

Floor Plans



Area Map



Energy Performance Graph

Energy Efficiency Rating		Current	Potential
Very energy efficient - lower running costs			
(92 plus) A			
(81-91) B		83	83
(69-80) C			
(55-68) D			
(39-54) E			
(21-38) F			
(1-20) G			
Not energy efficient - higher running costs			
England & Wales		EU Directive 2002/91/EC	

These particulars, whilst believed to be accurate are set out as a general outline only for guidance and do not constitute any part of an offer or contract. Intending purchasers should not rely on them as statements of representation of fact, but must satisfy themselves by inspection or otherwise as to their accuracy. No person in this firm's employment has the authority to make or give any representation or warranty in respect of the property.