



## Notting Hill Gate, W11

£3,250 Per calendar month

A spacious split-level two bedroom apartment set on the ninth floor and tenth floor of a sought-after purpose-built block in the heart of Notting Hill Gate. Offering excellent natural light throughout, the property features a generous reception room, separate fitted kitchen, two well-proportioned bedrooms and a private balcony with far-reaching views across London.

Campden Hill Towers is a private development which is situated in the centre of Notting Hill Gate with a wide range of shops and restaurants nearby.

### Features

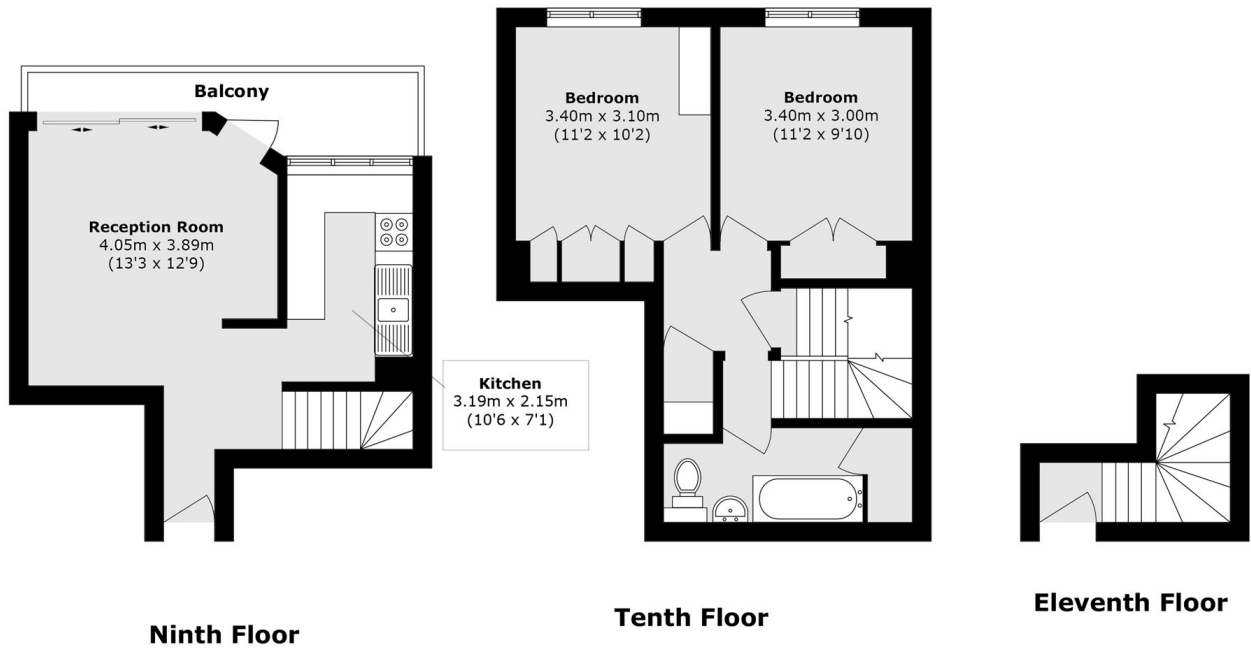
- Two Double Bedrooms
- Split Level
- Separate Kitchen
- Private Balcony
- Wood Flooring
- Bright And Spacious
- Abundance of Natural Light
- Great Views of London
- Ninth Floor



**Notting Hill Gate, W11**



# Notting Hill Gate, London, W11



Total area (approx.): 72.5 sq. m (780.3 sq. ft)  
Balcony area (approx.): 5.7 sq. m (61.3 sq. ft)