



Lilac Gardens, W5

£853 Per week

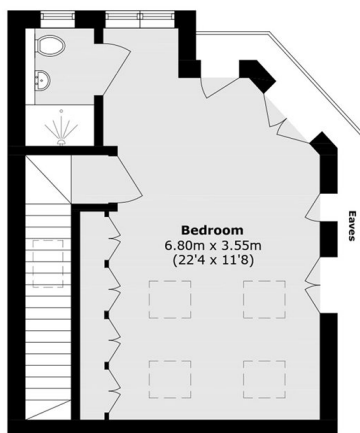
Modern new-build four-bedroom home with three bathrooms, underfloor heating downstairs, off-street parking for two cars, and a low-maintenance garden

Lilac Gardens is 0.2 miles from South Ealing Station (Piccadilly Line) and has easy access to A4/M4 for commuting in and out of London.

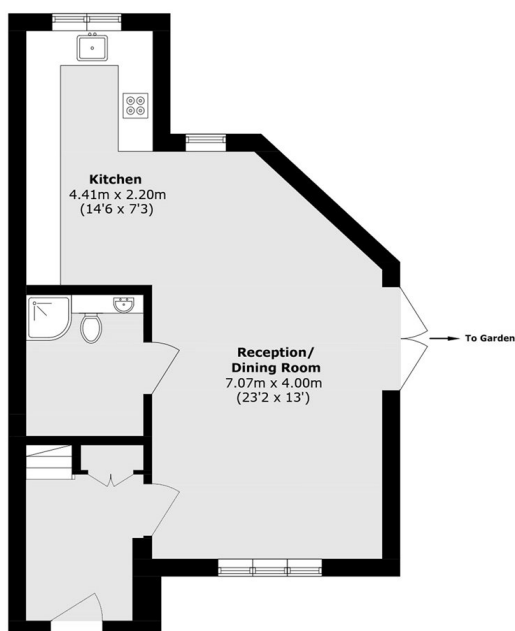
Features

- New Build House
- Four Bedrooms
- Three Bathrooms
- Underfloor Heating Downstairs
- Off Street Parking (Two Cars)
- Low Maintenance Garden

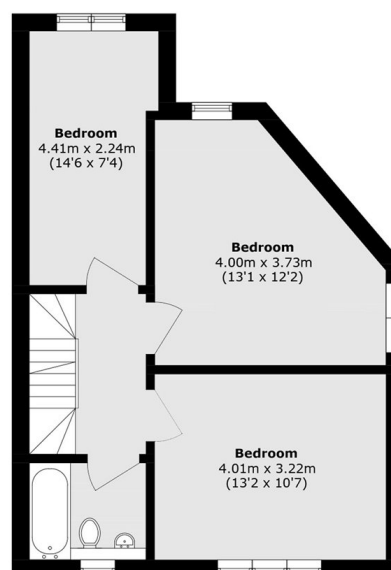
Lilac Gardens, LONDON, W5



Second Floor



Ground Floor



First Floor

Total area (approx.): 127.7 sq. m (1374.5 sq. ft)
(Excluding Eaves)