



POPLAR AVENUE

£359,950



ANDREW HILL

Poplar Avenue

19 Poplar Avenue, Wetherby, West Yorkshire, LS22 7RA

A 3 bedroom detached bungalow set amidst mature gardens in a quiet cul de sac location. now requiring updating.

The bungalow has been extended from its original design and provides spacious and highly flexible accommodation which includes a sitting room, breakfast kitchen, 2 double bedrooms, bedroom 3/study which leads into the garden room and shower room with a white suite.

Attached garage with parking in front.

Nice sized mature gardens to the side and rear.

The property forms part of a small cul de sac tucked away within a popular and well established residential area of Wetherby, convenient for many nearby shops and amenities. The town centre itself is within a pleasant walk and provides a good selection of shops and cafes.

A good sized property in a lovely setting with great potential.

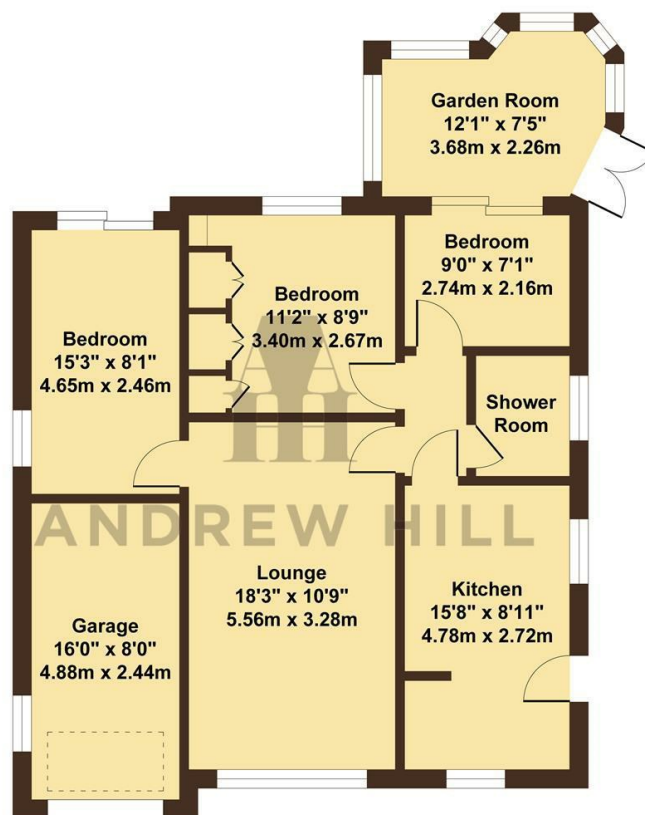




- Detached Bungalow
- Breakfast Kitchen
- Cul De Sac Postion
- Popular Residential Area

- 3 Bedrooms
- Shower Room
- Mature Gardens

- Sitting Room & Garden Room
- In Need Of Modernisation
- Garage & Drive



Ground Floor

Services

- Mains services connected.
- Gas central heating.
- Sealed unit double glazing.
- Council tax band D.
- EPC rating D.

9 Princes Square, Harrogate, North Yorkshire, HG1 1ND
 T: 01423 528528
 E: hello@andrewhill.co
 www.andrewhill.co



ANDREW HILL