



Byrne Road, SW12

£465,000

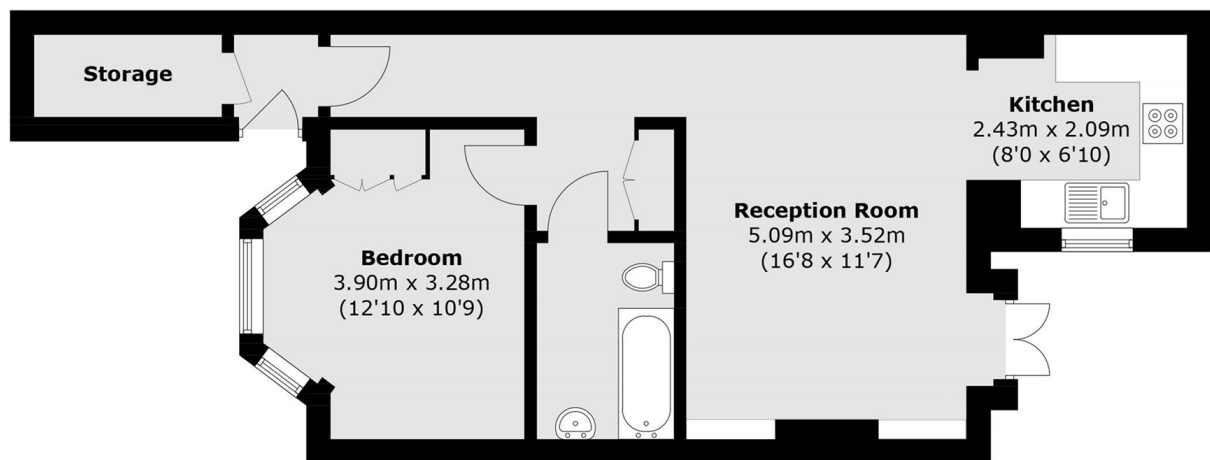
This period conversation with its own private entrance consists of a well-proportioned double bedroom to the front, featuring a bay window, plantation shutters and built-in wardrobes. To the rear, a semi open-plan reception room provides space for both living and dining, with a modern fitted kitchen positioned just off the main living area. Double doors open onto a private courtyard garden, creating a bright and versatile entertaining space.

Byrne Road is located within easy reach of Bedford Hill and Balham High Road, which offer a great selection of shops, bars and restaurants. The open spaces of Tooting Bec Common are also easily accessed.

Features

- Period
- Private Entrance
- Double Bedroom
- Share of Freehold
- Front Garden
- Complete Chain in Place

Byrne Road, LONDON, SW12



Total area (approx.): 53.7 sq. m (578.0 sq. ft)