



jordanfishwick

Apt 315 The Boxworks, 4 Worsley Street,
£1,350 Per Calendar Month



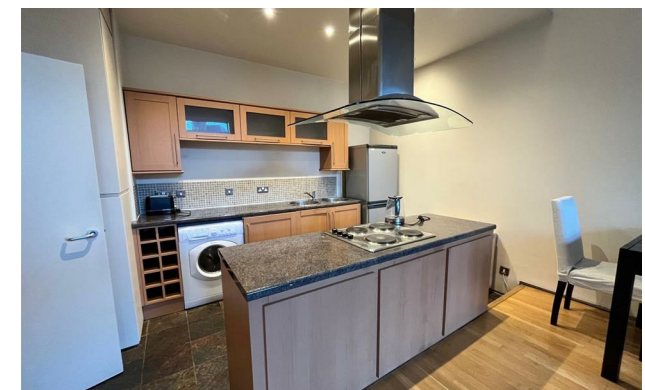
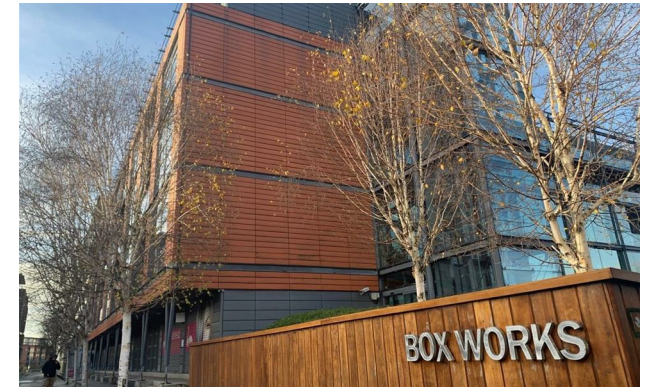
The Property

Available Early January. Jordan Fishwick presents this 1st floor two bed apartment in the Boxworks, a former paper mill. Comprising modern design and traditional conversion. Just a short walk to the City Centre, the apartment is large in size and is laid out with entrance hallway leading to large open plan living area with a kitchen with integrated appliances and stylish breakfast bar. From the living area there is a private decked balcony - with no obstruction. Both bedrooms are double with plenty of storage space. The Boxworks also benefits from beautiful large communal gardens onsite- great for summer! Furnished throughout. Two car (TANDEM) car parking space also included! NO pets allowed. Tax Band D. EPC rating C.

VIDEO OFFERS NOT ACCEPTED - PLEASE BOOK AN INPERSON VIEWING

The Boxworks Manchester M15 4NU

£1,350 Per Calendar Month



- Available Early January
- 1st Floor Apartment
- Two Double bedrooms
- Furnished
- Tax Band D
- EPC Rating C
- Balcony
- Tandem car park space
- Close to City Centre



Energy Efficiency Rating		
	Current	Potential
Very energy efficient - lower running costs		
(92 plus) A		
(81-91) B		
(69-80) C	79	81
(55-68) D		
(39-54) E		
(21-38) F		
(1-20) G		
Not energy efficient - higher running costs		
England & Wales		EU Directive 2002/91/EC





These particulars are believed to be accurate but they are not guaranteed and do not form a contract. Neither Jordan Fishwick nor the vendor or lessor accept any responsibility in respect of these particulars, which are not intended to be statements or representations of fact and any intending purchaser or lessee must satisfy himself by inspection or otherwise as to the correctness of each of the statements contained in these particulars. Any floorplans on this brochure are for illustrative purposes only and are not necessarily to scale.

Offices at: Offices at Chorlton, Didsbury, Disley, Hale, Glossop, Macclesfield, Manchester Deansgate, Manchester Whitworth Street, New Mills, Sale, Wilmslow and Withington