



12 Rockingham Way
Burton Latimer, Northamptonshire NN15 5XB



Simpson & Partners



Beautifully presented and set across three floors, this generous four-bedroom end terrace home offers modern family living in a sought-after location.

On the ground floor, you'll find a welcoming entrance hallway with convenient W/C, a well-equipped kitchen, and a large living/dining room with ample space for relaxation and entertaining, opening out to the rear garden.

The first floor features three well-proportioned bedrooms and a family bathroom. Occupying the entire top floor, the impressive master suite includes fitted wardrobes, a dressing area, and a modern en-suite shower room, creating the perfect private retreat.

Outside, the property boasts a good-sized garden ideal for family life or outdoor entertaining, along with off-road parking to the front.

This superb home offers versatile living space over three levels and is perfect for growing families or those seeking extra room to work from home. Early viewing is highly recommended.

Agents Note: Green charge is £115.84 per annum.

 4  2  1

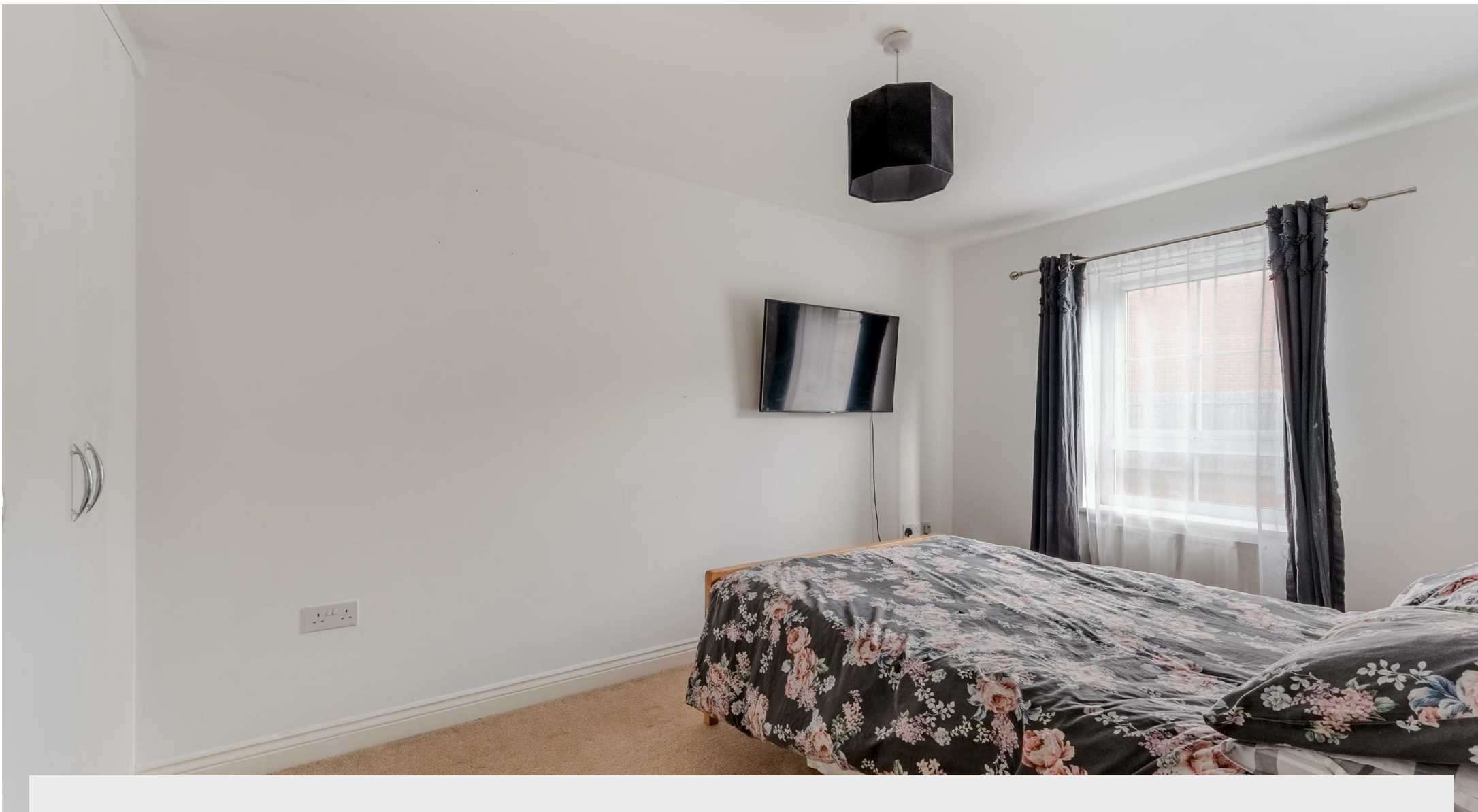
Price £273,995



24' Bedroom With En-Suite Shower Room

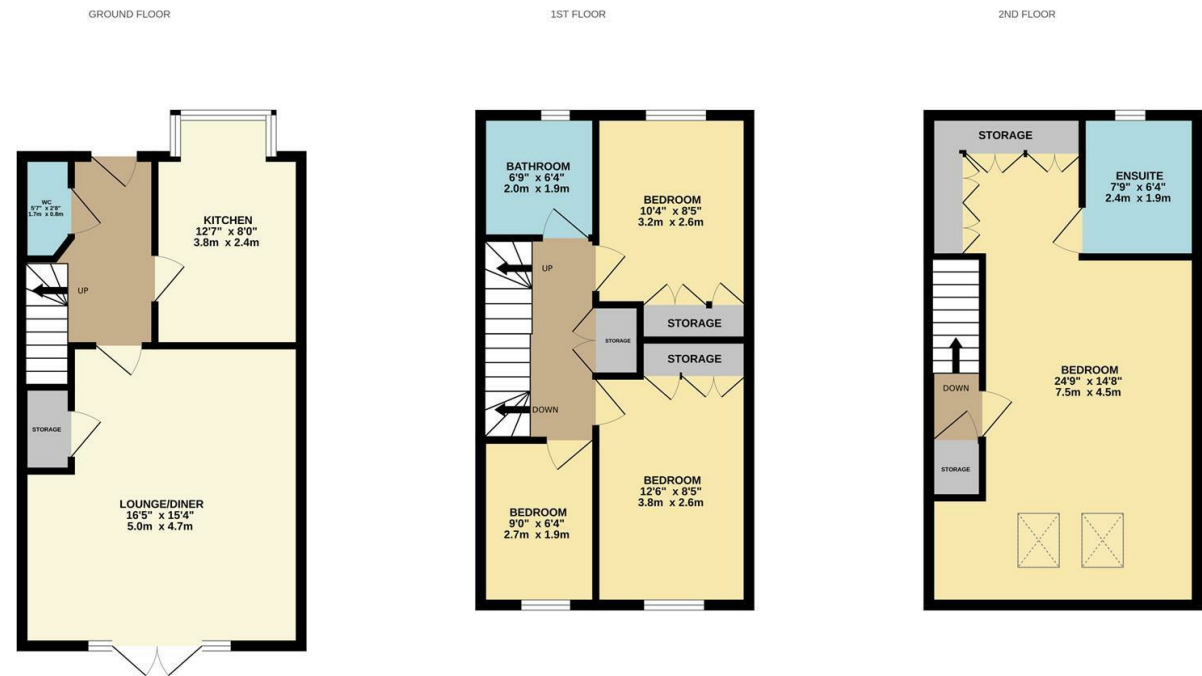


Simpson & Partners

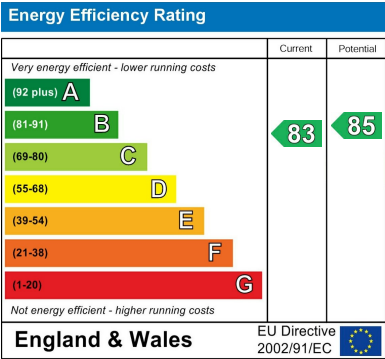


Rear Garden With Paved Seating Area





Whilst every attempt has been made to ensure the accuracy of the floorplan contained here, measurements of doors, windows, rooms and any other items are approximate and no responsibility is taken for any error, omission or mis-statement. This plan is for illustrative purposes only and should be used as such by any prospective purchaser. The services, systems and appliances shown have not been tested and no guarantee as to their operability or efficiency can be given.
Made with Metropix ©2025



When you buy with Simpson and Partners, you know **you'll be in safe hands**. From the moment you walk through our doors, we'll make you **feel truly welcome**. Our sales consultants and financial advisors will take you through **every step of the process**, offering **free expert advice** along the way, from help choosing the right mortgage and insurance through to finding your conveyancer. And if you need help selling your home too, **with over 20 years of local experience, you can trust us to get you moving**.



**Simpson
& Partners**

Making Every
Journey Personal



01536 518200

kettering@simpsonandpartners.co.uk

<https://www.simpsonandpartners.co.uk/>

1 Silver Street, Kettering, Northants, NN16 0BN