



POINT WHARF LANE, TW8

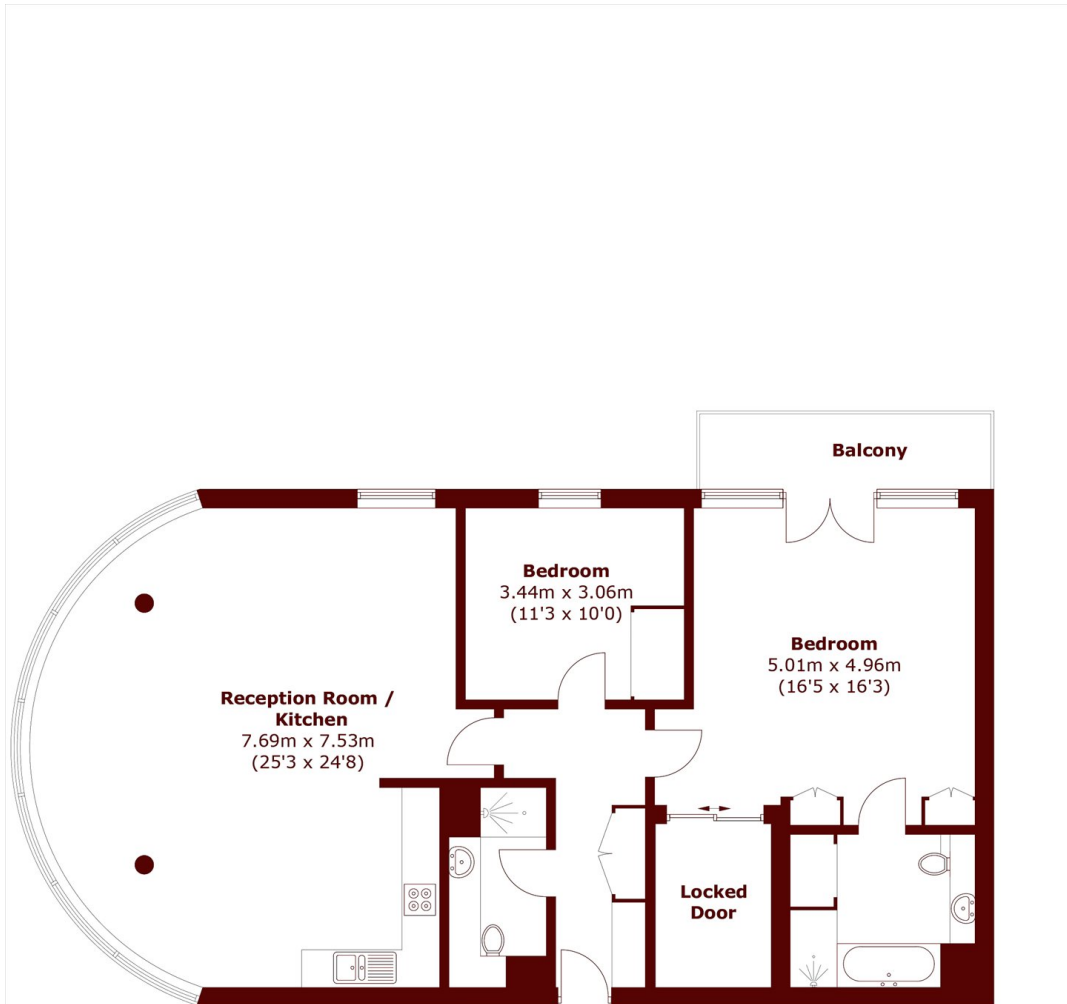
£2,895 per month

This beautifully presented modern two-bedroom apartment enjoys breathtaking direct river views from its own private balcony.

Two double bedrooms
Panoramic views
Open plan living

Secure parking
Private balcony
Energy rating: b

STEP INSIDE POINT WHARF LANE



Total area (approx.): 110.0 sq. m (1184.0 sq. ft)
Balcony area (approx.): 4.6 sq. m (49.5 sq. ft)

Chiswick
020 8629 0900

Energy Rating: B We aim to make our particulars both accurate and reliable. However, they are not guaranteed; nor do they form part of an offer or contract. If you require clarification on any points then please contact us, especially if you're traveling some distance to view. Please note that appliances and heating systems have not been tested and therefore no warranties can be given as to their good working order

MARSH &
PARSONS