



HW

ESTATE AGENTS

Brunswick Place, Hove
£280,000



Brunswick Place, Hove

This stunning 1-bed flat close to the seafront and amenities offers charm, quality, and potential. Open-plan layout, high spec finishes, great location. Ideal for investors or first-time buyers. Don't miss out on this rare gem! Listed £280k-£300k.

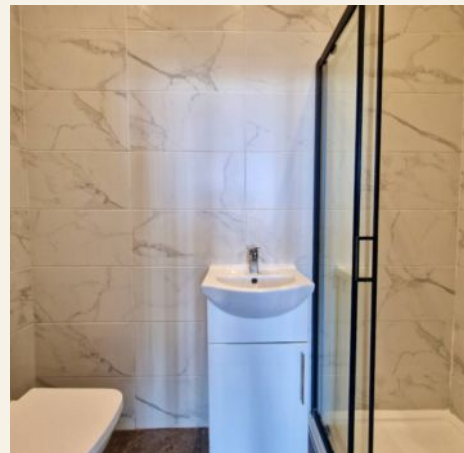
Council Tax band: B

Tenure: Share of Freehold

EPC Energy Efficiency Rating: C

EPC Environmental Impact Rating: C

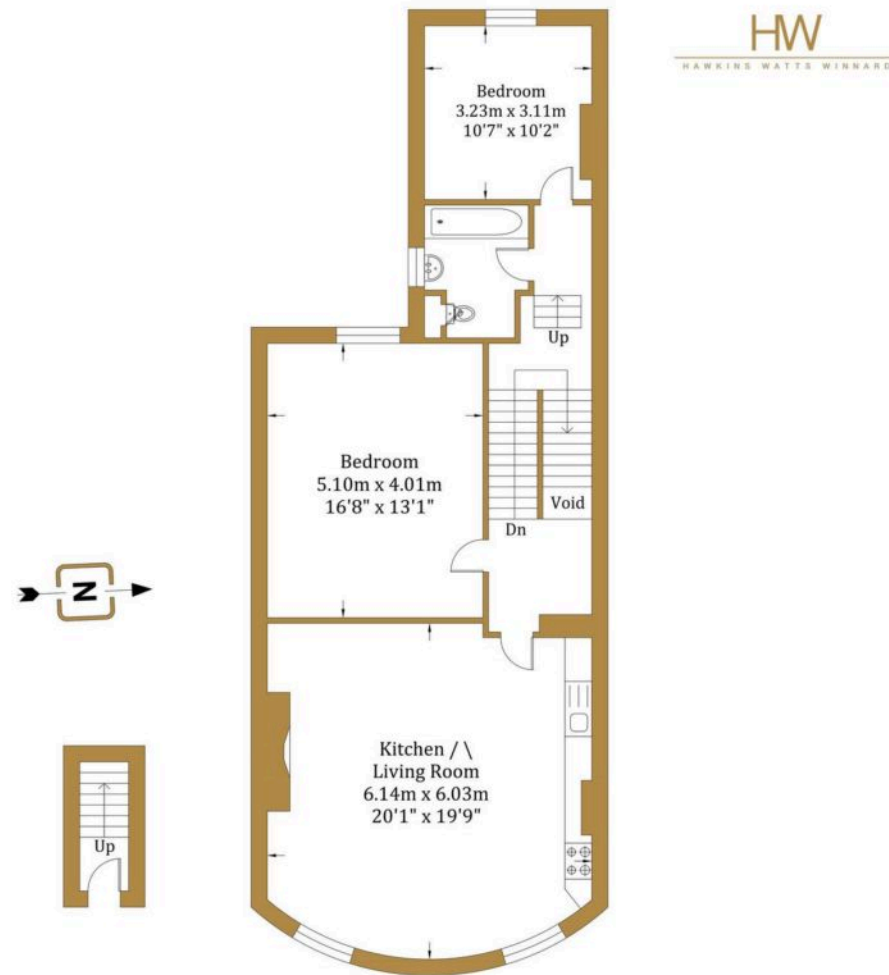
- GUIDE PRICE £280,000 - £300,000
- Excellent BTL Investment
- Period Conversion Property
- Ideal First Time Purchase
- Close To Seafront & Local Amenities
- Finished To A High Standard
- Fantastic Location
- Chain Free





Brunswick Place

Approx. Gross Internal Area:- 87.45 sq.m. 941.30 sq.ft.



Second Floor
Approximate Floor Area
23.46 sq ft
(2.18 sq m)

Third Floor
Approximate Floor Area
917.83 sq ft
(85.27 sq m)

Illustration for identification purposed only, measurements are approximate, not to scale.
© hwestateagents



HW Estate Agents

HW Estate Agents, 80 Goldstone Villas, Hove - BN3 3RU

01273 359000 · hove@hwestateagents.co.uk · www.hwestateagents.co.uk

HW

ESTATE AGENTS