



Guide Price
£340,000

Freehold

2x  1x  1x 

**Cowley Drive,
Woodingdean, Brighton,
East Sussex, BN2**

OVER 60?

Secure this property
for up to **59% less!**

cubitt & west
Helping you move forwards



Main features

- Well-presented mid terrace home
- Modern high gloss kitchen & bathroom
- Bedroom 1 currently split into two rooms
- Large block paved driveway, two tier garden with block paved patio & lawned garden
- No onward chain

Accommodation

GROUND FLOOR

Entrance Porch
Hallway
Lounge/Diner : 22'10 x 12'11 at widest point (6.96m x 3.94m)
Kitchen: 11'8 x 7'8 (3.56m x 2.34m)

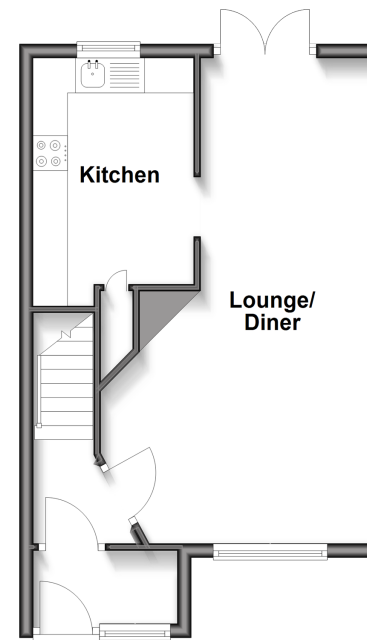
FIRST FLOOR

Landing
Bedroom 1: 11'5 x 9'6 (3.48m x 2.90m)
Bedroom 2: 10'11 x 7'10 (3.33m x 2.39m)
Dressing Room : 10'10 x 8'1 (3.30m x 2.47m)
Bathroom

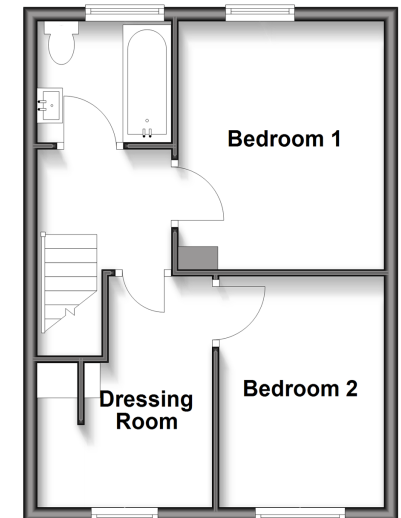
OUTSIDE

Block Paved Driveway
Rear Garden

Ground Floor
Approx. 36.6 sq. metres (394.3 sq. feet)



First Floor
Approx. 35.0 sq. metres (376.6 sq. feet)



Call Woodingdean - 01273 606121 ■ cubittandwest.co.uk

■ Legal advice should be taken to verify fixtures/fittings, planning, alterations and/or lease details
■ Through a Homewise Home For Life Plan people aged 60+ can secure this property for up to 50% less, by purchasing a Lifetime Lease.

■ Appliances & services are untested, dimensions are approximate and floor plans are not to scale



32504300/20251120/DS/KK